

Color WiFi Video Doorbell

RL-IP03D

Quick Installation Guide

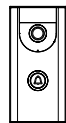


CE



Version 1.3

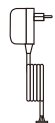
What's Included



WiFi doorbell
*1



Bracket
*1



Adapter
*1



Sub-unit
*1



User Manual
*1



Screw Pack *1

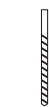
What You Need



Screw driver



Drill



Ø6mm



Pencil



Ruler



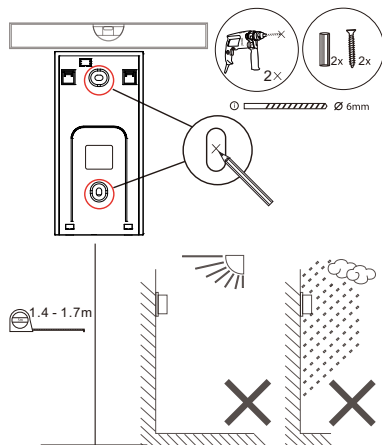
Level ruler



Smartphone

Installation Instruction

1. Install the hanger on the door at 1.4 - 1.7m up from the ground(The mounting height depends on the camera views) and avoid direct sunlight.



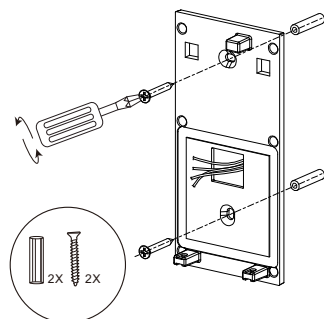
SURFACE	INSTALLATION TYPE	DRILL BIT TYPE
Brick	Screw+Anchor	Masonry Bit-5/32"
Cement Siding	Screw+Anchor	Masonry Bit-9/64"
Concrete	Screw+Anchor	Masonry Bit-1~1/8"
Drywall	Screw+Anchor	Standard Bit-1~1/8"
Stucco	Screw Only	Standard Bit-9/64"
Wood	Screw Only	Standard Bit-7/64"
(Other Siding)	Screw Only	Standard Bit-1~1/8"

* Concrete can be challenging for drilling.If you are inexperienced at drilling into the particular type of concrete, you may want to consider a professional installation.

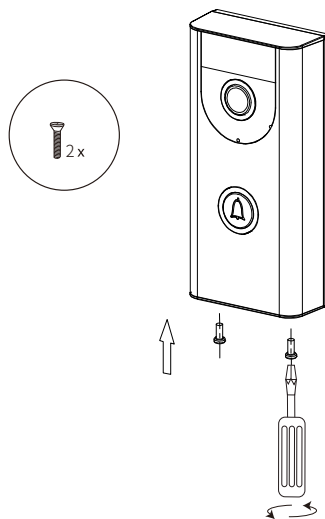
*Depends on the subsurface.Test drill a very small pilot hole to determine the surface to which you are ultimately fastening.

Hard subsurfaces may require a masonry drill bit. If the test hole seems unstable,you may need to use the screw+anchor method.

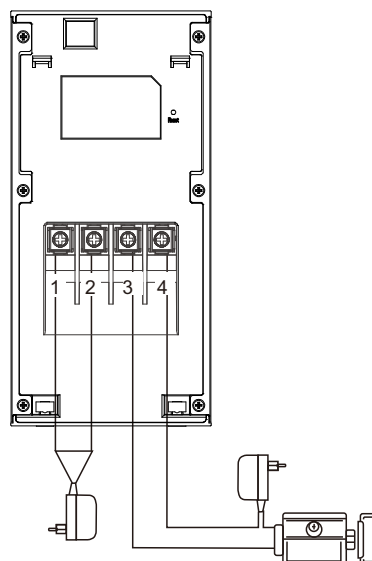
2. Fix the hanger with provided screws
(See pictures below)



3. After finishing wiring job , put the WIFI doorbell on the hanger and then fix it with the screws to complete the whole installation



Wiring Diagram

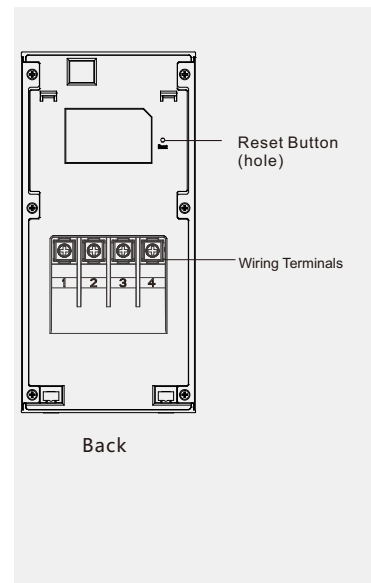
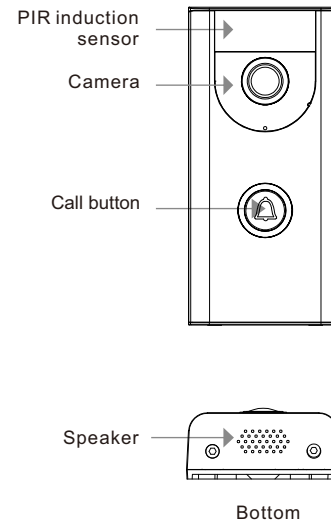


NOTE:

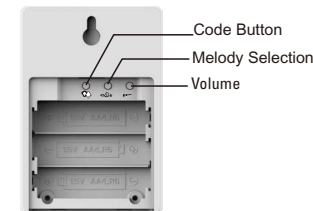
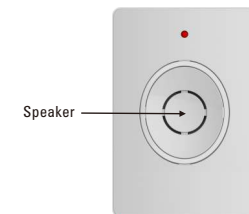
- 1) The power supply unit is AC/DC 8-24V
- 2) Please choose the power supply for unlocking according to the requirement.
- 3) The polarity of the power doesn't matter.

Panel Introduction

A. WIFI doorbell



B. Sub-Unit



Melody Selection

Each time you press the Melody Selection button, it will sound the next ringtone automatically. You can use different ringtones for different remote controls.

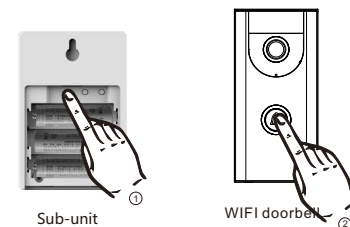
Volume

Press the Volume button, and the volume will cycle according to "High-Low" order.

Pairing Devices

Learning Code

Insert batteries for the sub unit, press " " and then release. Then, press " " on the WIFI doorbell (The indicator light will be ON). When the sub unit sounds "Ding-Dong" and the indicator light flashes blue, the code is learned successfully.



Clearing Code

Remove batteries from the sub unit and then press and hold " ". Then insert batteries again and then release the button, the code is cleared successfully.

APP Operation Instruction

A. APP Installation

Scan the QR code below to download and install the APP "VDP" to your mobile phone



Applied to Android 5.0 / iOS 7.0 or higher



Android
Google play download

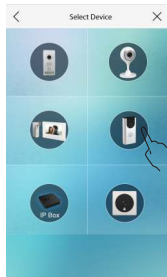
iOS

B. Operation for adding devices

1. When you add the device for the first time, make sure your mobile phone has been connected to the WiFi successfully (5G WiFi is not supported).
2. Connect the device to power supply and wait until the device start is complete. The indicator light will flash red.

3. Launch the APP

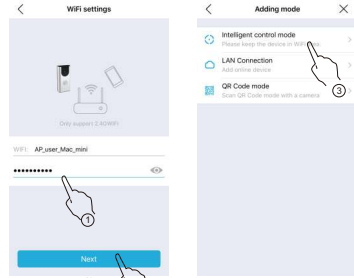
- 1) Click the icon " ".
- 2) Select the device to be added from the device list.



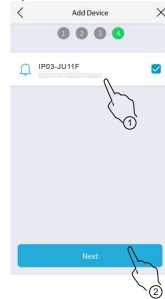
3) Click NEXT according to the instructions.



- 4) Enter the WIFI password and then click NEXT.
- 5) If you add the device for the first time, please choose "Intelligent control mode" (But if the device has been added and is online, you can choose "Wired access mode" to add).

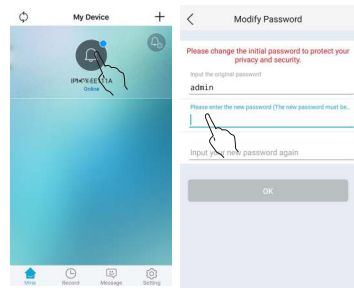


6) Select the device found and then click "Add".



7) After adding, it will auto return to the main screen. Click on the device icon to change the initial password.

The default device password is "admin". To protect your privacy, you will be required to change the password for the first-time use.



C. Help Center

Enter the help center interface:

- 1) After starting the APP for the first time, click " "? , in the upper right corner of the interface.
- 2) Launch the APP, click on the lower right corner of the " ? " setting", then a setting screen will show up, lastly, select the " ? " Help Center" in the list.

FAQ

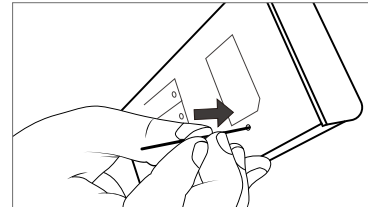
1. The APP cannot find new devices when adding a device.

- 1) Please check whether the network you connected is 2.4GWiFi.
- 2) Please check whether the WiFi password you type is correct.
- 3) If the above operation is correct, a reset action is required, and then re-adds.

Note: The reset action will delete all configuration information on your WIFI doorbell .

Reset action:

Long press the **RESET** button with the needle then release it after 5 seconds in standby status. Then the unit will auto restart and then restore to factory default after hearing a sound of: "Reset the product successfully, the system will restart", which means the unit has been restored to the factory condition.



Using the high-power router or adding a repeater is recommended if the router's signal is too weak to cover the installation area(Only supported by 2.4GWiFi).

2. Devices not online.

- a. Click " " in the top left corner of the device, to refresh the device status.
- b. Please check whether the router's network is normal. Please check whether the mobile is connected to network normally.
- c. 5G network is not supported by the indoor unit, please connect with 2.4GWiFi.
- d. Keep the device placing on the WiFi network where it was added. If the device was added by using WiFi ① , it will not work properly when it is taken away from WiFi ① and be placed at WiFi ② . If you want to use the device on the WiFi ② network, please reset the device, delete it from APP and re-add it again.

3. Click " " device" always is waiting.

- a. Please check the device's online-state.

4. Cannot receive push notifications

- 1) Please make sure the notification permission for the APP " " is enabled.
- 2) Delete the device and re-add it again.

5. Indicator Light

Blinking red	Network connection fails. Please check if the WIFI connected is normal.
Blinking red and voice prompt "Configuration network"	Device reset or initial use. Configure network by following the steps.
Blinking green	PIR (human movement detection) is triggered.
Calling busy tone and blinking green	An error causes the device fail. Power off and then power on the device.

Features

Secure: You can see your visitors via APP wherever you are.

Motion detection: You can preset this function via APP. Once a movement is detected, you will get instant notifications in your mobile.

Unlock Door Strike: Remote unlock via APP on Mobile.

Photo & Video Recording: Photo and video can be recorded through mobile.

Night vision: Infrared night vision light for high quality image at night.

QR Code Sharing: Users can share the QR code to family or friends to help them to connect to the same device.

Specifications

A. WIFI doorbell

Camera	1.3 million pixels
Maximum number of users	4 users at the same time
Power Supply	AC/DC 8-24V
WIFI Security	WPA/WPA2
Outline Dimensions	135*65*28mm

B. Sub-Unit

Battery	DC4.5V(1.5V/AA/LR6*3)
Standby current	<0.5mA
Max working current	≤200 mA
Max volume	≥80dB(distance:0.3m)
Receiving RF	433.92MHz±250KHz

FCC Warnings

1. This device complies with Part 15 of the FCC Rules. Operation is subject to the following two conditions:
 - 1) This device may not cause harmful interference.
 - 2) This device must accept any interference received, including interference that may cause undesired operation.
2. Changes or modifications not expressly approved by the party responsible for compliance could void the user's authority to operate the equipment.

NOTE: This equipment has been tested and found to comply with the limits for a Class B digital device, pursuant to Part 15 of the FCC Rules. These limits are designed to provide reasonable protection against harmful interference in a residential installation. This equipment generates uses and can radiate radio frequency energy and, if not installed and used in accordance with the instructions, may cause harmful interference to radio communications. However, there is no guarantee that interference will not occur in a particular installation. If this equipment does cause harmful interference to radio or television reception, which can be determined by turning the equipment off and on, the user is encouraged to try to correct the interference by one or more of the following measures:

1. Reorient or relocate the receiving antenna.
2. Increase the separation between the equipment and receiver.
3. Connect the equipment into an outlet on a circuit different from that to which the receiver is connected.
4. Consult the dealer or an experienced radio/TV technician for help.

FCC Radiation Exposure Statement

This equipment complies with FCC radiation exposure limits set forth for an uncontrolled environment. This equipment should be installed and operated with minimum distance 20cm between the radiator & your body.

IC Warnings

English:

1. This device complies with Industry Canada's licence-exempt RSSs. Operation is subject to the following two conditions:
 - (1) This device may not cause interference;
 - (2) This device must accept any interference, including interference that may cause undesired operation of the device.
2. Changes or modifications not expressly approved by the party responsible for compliance could void the user's authority to operate the equipment.

French:

Le présent appareil est conforme aux CNR d'Industrie Canada applicables aux appareils radio exempts de licence.

L'exploitation est autorisée aux deux conditions suivantes :

- (1) l'appareil ne doit pas produire de brouillage, et
- (2) l'utilisateur de l'appareil doit accepter tout brouillage radioélectrique subi, même si le brouillage est susceptible d'en compromettre le fonctionnement."