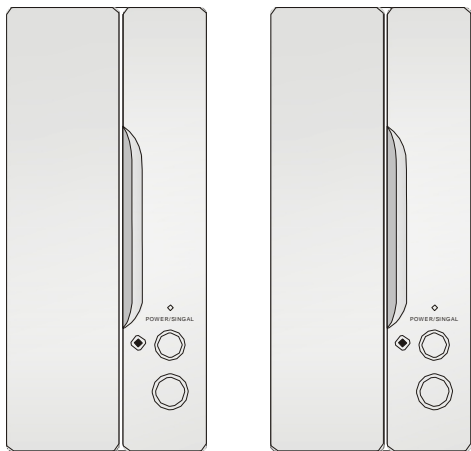
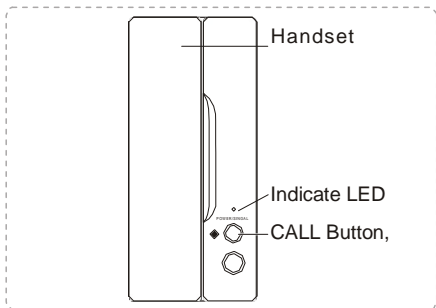
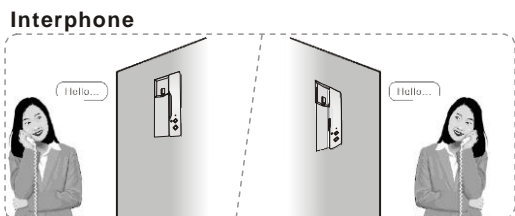


S9390 - Two-Way Internal Audio Interphone

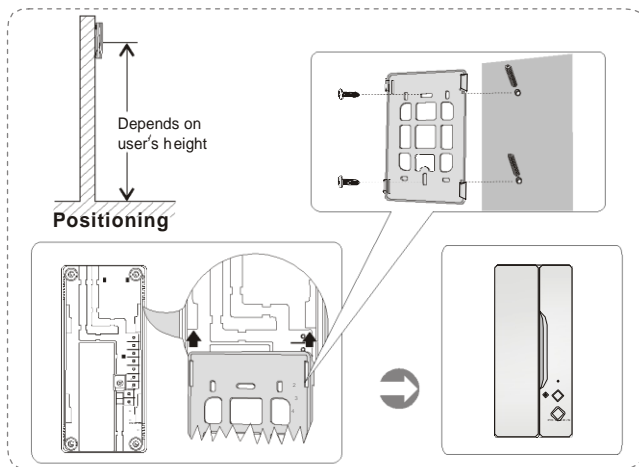


Installation and Operation Manual

Function

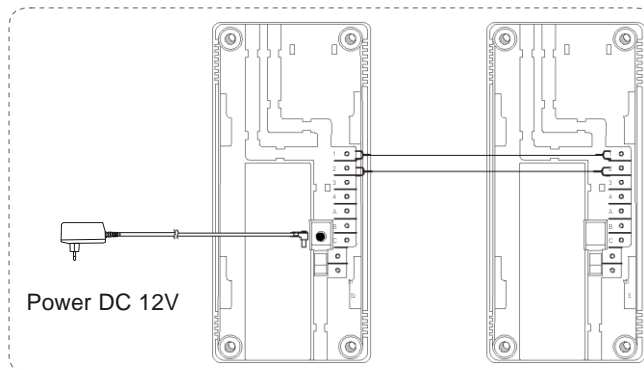


INSTALLATION




1. Choose a suitable place indoors.
2. Affix the under plate of the indoor-phone.
A: Drill a hole in the wall and insert the plugs.
B: Tighten the screws.
3. Insert the bracket into the slot of indoor-phone.

Wiring diagram



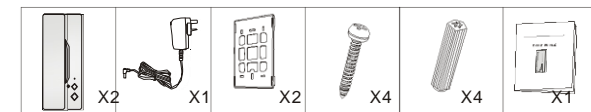
Intercom (For extended indoor-phone)

When the whole system is on a standby status, press the  button to activate the internal calling. Pick up the intercom handset to communicate with the person on the other phone handset..

Specifications

Supply Voltage	12Vd.c. /500mA
Consumption Current	100 20mA
Operation Temperature	-10 ~+5℃
Operation Humidity	85%(Max)
External Dimension	220(L) 100(W) 50(H)mm

Package list



Maintenance and Safety



Do not mount the unit near a heat source live a stove, or in areas of high temperature or humidity, as this will cause the unit to malfunction.



Do not mount the units near devices that generate strong magnetic fields, like televisions, audio speakers.



Do not drop the phone handsets and avoid impact force.



Do not use wet hands when answering or operating the intercom. Volatile, corrosive liquids or paint thinners should not be used to clean unit.



There are no user-serviceable parts inside interphone handsets. Do not disassemble the device. To do so will invalidate your warranty. Return to place of purchase.

Introduction

This device provides a simple point to point intercom function for communicating between rooms. It is ideally suited to domestic installations in large homes, or commercial applications such as care facilities, factory units and secure entryways. The system is sold as a pair with 25m of cabling and mounting hardware included. Includes power supplies.