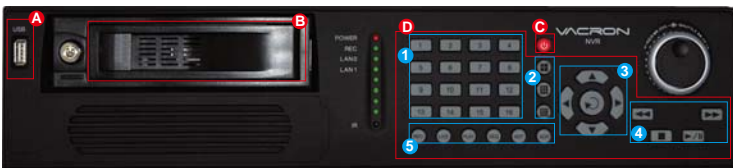


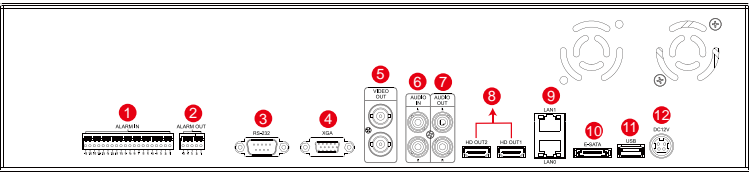
## Front Panel & Installation



- A) USB slot      B) Lockable removable hard drive tray      C) Power switch  
D) Operating on front panel is identical to operating on remote controller.

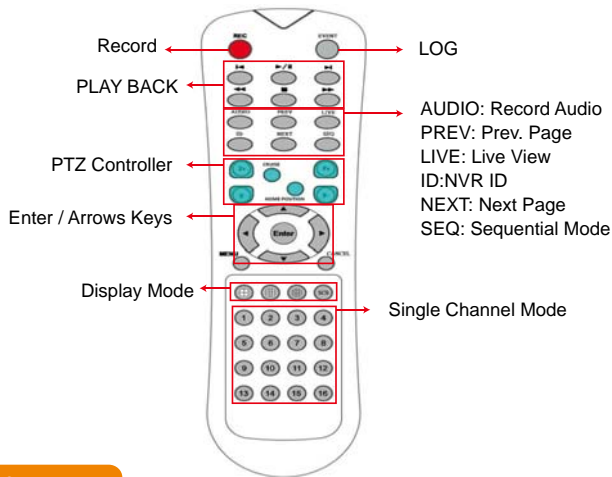
Please refer to section of remote controller for instructions.

- 1) Single channel buttons    2) Display mode: 4, 9, 16 channel viewing  
3) Arrow keys / Enter  
4) Playback keys: fast forward/rewind/play/pause/stop keys, and jog shuttle  
5) Quick buttons: Record/Live/Play/Sequence/Next/Screen.



- |                 |  |
|-----------------|--|
| 1) Alarm Input  | 7) Audio Output  |
| 2) Alarm Output | 8) HD Output x 2 (For single display, please use HD OUT 1) |
| 3) RS-232       | 9) LAN x2 port   |
| 4) XGA Output   | 10) E-SATA Output  |
| 5) Video Output | 11) USB 2.0  |
| 6) Audio Input  | 12) DC12V  |

## Remote Controller



## Specification

System	CPU: TI SoC Operating system : Linux
Storage Device/ Interface	Build in SATA interface x 4, compatible SATA/SATAII HDD( Max. 3TB) Support E-SATA interface and External E-SATA RAID function HDD Caddy x1 DVD burner x1(Optional) (DVG RW / DVD ±R : DVD burner occupied one interface of SATA)
User Interface	35 operating buttons on Front panel / shuttle play controller NVR IR remote control x1 RS-232 x1 –support SMS sending device, SMS generate automatically when Alarm activated
Video And Other I/O Interface	3 Video outputs: HD output x2 and VGA x1 ; The alternatives are HD1 and VGA;HD2 is reserved. USB 2.0 x2 – connect to an external USB devices (mouse or USB flash) Alarm OUT x4 / Alarm IN x16 Headphones (speakers) sound output x1 (left and right) Microphone audio input jack x1 (left and right) Ethernet x2 – 10/100/1000 (IEEE 802.3 Type 10Base-T / IEEE 802.3u Type 100Base-TX / IEEE 802.3ab Type 1000Base-T) : Auto-MDIX.

Network Protocol	IPv4 、 ARP 、 TCP 、 UDP 、 ICMP 、 DHCP 、 NTP 、 DDNS 、 SMTP 、 FTP 、 HTTP 、 RTP 、 RTSP 、 RTCP
Video Format	H.264 compression format E-Map
Live / Playback	Real-time Live View capable 16CH VGA @30fps or 4CH 1080P @23fps 4-CH 1080P @23fps Synchronous Playback Recording Query: Time search, Event search (IP CAM displacement, Alarm I / O triggered alarm notification) Playback speed/ slow forward / fast forward in 5 different speed, Play Frame by Frame mode (forward or backward) Pentaplex operation: Live/ Record/ Playback
Event Notification	Support e-mail / SMS / Mobile App message notifications Event Notification : Alarm I / O trigger, Motion detection, Video loss, HDD error
Recording Mode	Constant recording Schedule recording Alarm triggered recording (include motion detection recording): Complete event video reserved 10 seconds before and 60 minutes after event taken place. Schedule alarm triggered recording (include motion detection recording): Complete event video reserved 10 seconds before and 60 minutes after event taken place. Manual recording Only recording without live (depending on user authority)
Backup Management	Video output format: AVI The dump media directly burn to CD / DVD (optional) USB mobile storage device or remote NAS
System Management	Remote Client software; live, playback set up by PC (remote side) Authorization: Maximum 10 group accounts, Hierarchical authority Support 3 users log on by Client-side software or browser. Systems operation records, record login time, IP and selected video. Browser: MS IE7-IE9 / Fire Fox / Safari / Chrome
Support Equipment	Support megapixel IP Camera video Support CCTV camera video via Video Server.
Power	DC12V / 8.33A ( accessory 110V-240V 2.5A / DC12V 8.33A ADAPTER x 1)
Operating Temperature	0-45℃

★Product specifications are subject to change without notice; please contact us for the latest information.

### CAUTION

For your safety, please read the manual and follow the instructions carefully before you install the DVR.

Do not expose the DVR under the sunlight, heat or wet environment while installation. As it could decrease the performance of DVR and damage the machine.

Do not touch the power plug or case with wet hands as this could result electric shock.

Do not forcedly bend or put heavy object on power cable as this could result in injury to personal or equipment.

Do not operate with damaged power cord or loose electrical outlet as this could result in electric shock or accident.

Please use individual power instead of share electrical outlets with other electrical equipment as this could result in damage or accident.

Do not attempt to service this DVR by yourself as it may expose you to dangerous voltage or other hazards. Please refer all service to the qualified servicing distributor.

Please do not remove the machine housing during operation. It may cause electric shock or accidental injury.

Do not place the machine on an uneven surface or it would decrease the DVR efficiency or malfunction.

Avoid any shock or bumping of the DVR while recording. Improper handling could damage the system.

H11ANK7001

## 16ch H.264 Network Video Recorder

• Quick User Guide •



Network video recording system

2013 AUG V1.0



## Features

- TI SoC CPU special design for NVR with the best image process efficiency.
- Support 4 units of SATA/SATA II device up to 12TB HDD recording capacity.
- Advanced H.264 compress technology provides the best HDD space usage.
- Embedded Linux system, to eliminate the threat from virus and hacking.
- Support 16CHs of IP camera (1080P) video and also support analogue camera video with optional Video server.
- HD output and E-SATA.
- Support IP CAM position layout and editable user definition.
- Variety of backup management can directly burn to CD / DVDR-RW (optional), USB storage device or NAS.
- Support 3 users log on by Client-side software or browser.



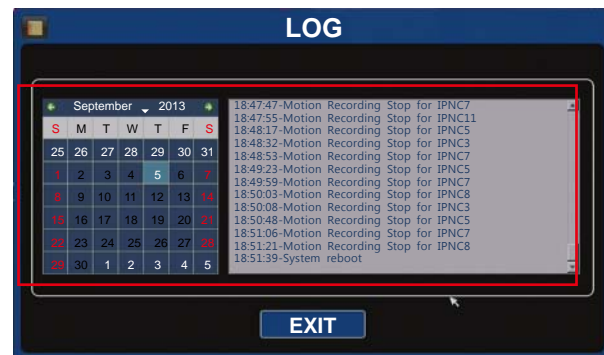
CAUTION

- Please install the SATA HDD and connect all of SATA power lead & data cable before switch on the machine.
- Please check the voltage is fit for the NVR.
- Please check the connection with other device is right or not.
- Please insert the power line.
- The power light is red after the NVR is power on.

## Operation Setup



### A) Log

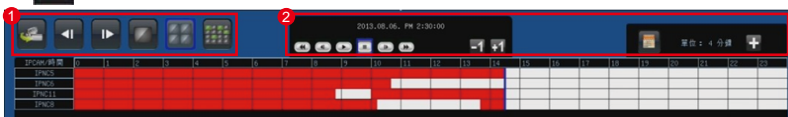


### B) Setup



- 1 DISPLAY 2 CAMERA 3 RECORD 4 EVENT  
5 AUDIO 6 STORAGE 7 BACKUP 8 SYSTEM

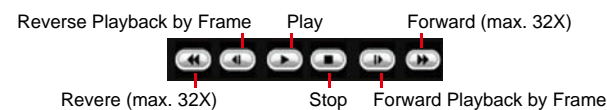
### D) Playback



- 1 Operations of Playback Pre page Single CH Arbitrary choice 4 CH



- 2 Search



### E) Previous and Next and Previous Page

- Click to go to previous / next four channel viewing.
- Click the yellow arrows on center point of left and right side of screen to go to previous/next four channel viewing.

### F) Display Mode

- Click for 1, 4, 9, or 16 channel viewing

## Advanced Features

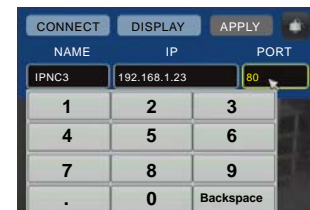
### 1. Quick Adjustment Viewing Channel Layout.

- The viewing channels are displayed in the order of IP address (e.g. xxx.xxx.xxx.001 is displayed before xxx.xxx.xxx.002).
- Two viewing channels may be swapped viewing squares.
- Click, hold, (the edge of the viewing channel turns green), drag and drop the channel to the desired position.



### 2. Quick Camera Info Display and Modification

- Click the viewing channel for on-screen keyboard.
- Right click on the cell to change parameter of the camera including camera name, IP address, and port. It also allows you to copy, paste, and delete.



### 3. Quick Search for IP Address and Name Change



### 4. Quick Selection of Viewing Channels



### 5. Zoom-In on Single Channel Display

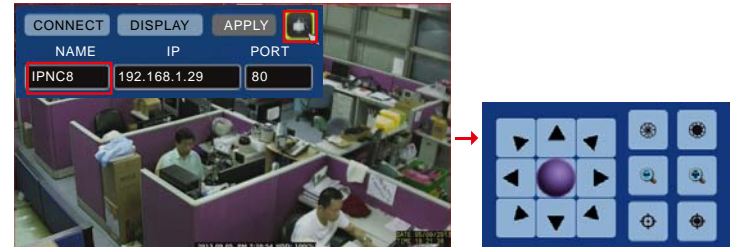


## 6. Firmware Upgrade



## 7. PTZ

- Click top-left corner of a camera to bring up parameter of camera info.
- Click PTZ icon on top-right corner for on-screen directional control panel.
- On-screen PTZ directional control panel stays on screen during live viewing.



## 8. Remote Monitoring and Playback

