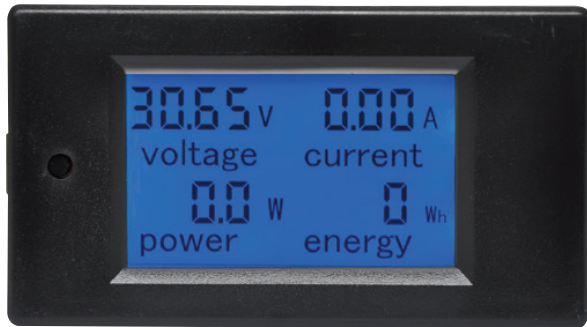


# Flush Mount Power Monitor Panel

## OPERATING INSTRUCTIONS



### Appearance and Key Functions

**1. Display Interface:** Display interface is large-screen LCD, it can display voltage, current, power, energy parameters at the same time.

#### 2. Display format:

2.1. Power: test range: 0~2kW, Within 1KW, the display format is 0.0~999.9W; 1KW and above, the display format is 1000~2000W.

2.2. Energy: test range: 0~9999kWh, Within 10KWh, the display format is 0~9999Wh; 10kWh and above, the display format is 10~9999kWh.

2.3. Voltage: test range: 6.5~100V, Display format: 6.50~99.99V

2.4. Current: test range: 0~20A, Display format: 0.00~20.00

#### 3. Key

3.1. Backlight control: Short press the button to turn on or off the backlight, the backlight has memory function, it can store the on or off state when power off.

#### 3.2. Reset energy

- Step1: Long press the button until the power display area display "CLr", then release the button.

- Step2: At this moment, the energy is flashing to prompt this is the energy reset state, if short press the button again, then the energy value is cleared and exit the reset flashing state.

- Step 3: If there is no operation within 5 seconds, it means the energy value is not cleared and will exit the reset state.

#### 3.3. Set voltage alarm threshold

- Step1: Long press the button until the power display area display "SET", then release the button.

- Step2: After enter this state, the voltage area display the current high voltage alarm value, the current area display the current low voltage alarm value and the last digit begins to flash, then you can short press to plus 1, when there is no operation over 3 seconds, it will switch the digit position automatically, from the high voltage alarm value to the low voltage alarm value, there are total six digits, the range of the voltage alarm threshold is 6.5~99.9V;

- Step3: After finish the setting, long press the button until the screen display "PASS", that means you set successfully and will exit the setting state automatically.

### Precautions

1. This module is suitable for indoor, please do not use outdoor.
2. Applied load should not exceed the rated voltage, current.
3. Wiring order can't be incorrect.

### Specifications

- Working Voltage: 6.5V~100V DC
- Test Voltage: 6.5V~100V DC
- Rated Power: 20A/2000W
- Measurement accuracy: 1.0 grade

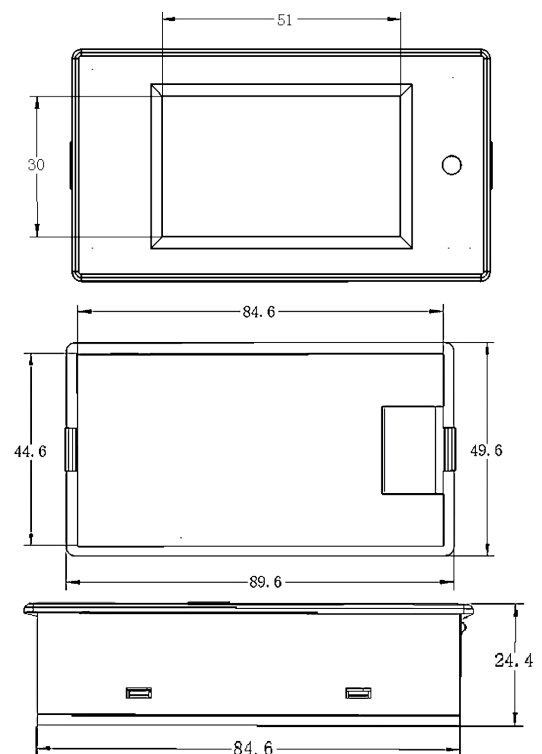
### OVERVIEW

A complete power monitoring panel with voltage, current, power and energy consumption (Wh) displayed simultaneously. Easy press fit mount with voltage alarm function. 2000W max. 6.5-100V DC. Cut out dimensions 84.5W x 44.5Hmm. Available with 20A internal load shunt.

### FEATURES

- Electrical parameter measurement function (voltage, current, active power, energy)
- Voltage alarm function (over voltage alarm threshold, backlight and voltage flashing to alarm).
- The reset function of energy key.
- Store data when power off.
- Large-screen LCD (display voltage, current, active power, energy at the same time)
- Backlight function.

### Product Dimensions (mm):



### Wiring Diagram

