

## Basic Troubleshooting

### \*LED not displayed

Check the power source is at correct voltage (5VDC) and correct polarity.

### \*Display appears scrambled

Check that all connections are correct and tight.

Check that there is no harsh interference nearby.

### \*Just display 1 or -1

1. Voltage out of range.

2. Check the connection of signal cables.

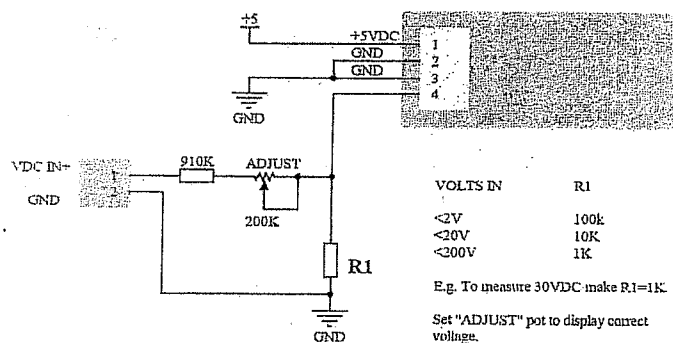
### \*Caution

Do not disassemble

Do not reverse polarity

### \*Suggested Circuit

Q 0588 rear view



## Q 0588 DIGITAL VOLTMETER MANUAL

Distributed By Altronics Pty Ltd  
Perth, Western Australia  
[www.altronics.com.au](http://www.altronics.com.au)

Q 0588 Series Digital Voltmeter

Digital Voltmeter- Power Source 5VDC measure DC199.9mV

FEATURES:

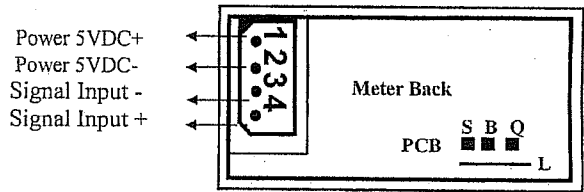
- Ultra-bright LED display
- High precision, low cost
- Easy installation
- Connector included

SPECIFICATIONS:

Model No.	Q 0588
Power Supply	5VDC
Measure Range	DC199.9mV
Maximum Count	199.9(3 1/2 digit)
Resolution	0.1mV
Accuracy	±0.3%+ 1digit
Input impedance	100MΩ
Max input voltmeter	±10V
Operating temperature	0℃~55℃
Relative humidity	20%~80%
Over Range Indication	Display 1 or -1 on the LED left
Dimension	W50mm x H26mm x D22.0mm
Panel Cutout Size	48mm×23mm
Sample Frequency	400ms

CONNECTION DIAGRAM:

- PIN 1: 5VDC +(Positive pole)
- PIN 2: 5VDC - (Negative pole)
- PIN 3: Signal Input - (Negative pole)
- PIN 4: Signal Input + (Positive pole)



NOTES: The polarity can not reversed

Decimal Position Adjustment:

- Decimal position 1.999[Short connection Q & L on the PCB]
- Decimal position 19.99[Short connection B & L on the PCB]
- Decimal position 199.9[Short connection S & L on the PCB]

Panel Cutout

