

Altronic Distributors warrants this product for one year from date of purchase from Altronics or its resellers to the consumer. If this item is part of an installation or another product, please contact the installer or supplier for your warranty.

During the warranty period, we undertake to repair or replace your product at no charge if found to be defective due to a manufacturing fault. The warranty excludes damage by misuse or incorrect installation (i.e. failure to install and operate device according to specifications in the supplied instruction manual), neglect, shipping accident, or no fault found, nor by use in a way or manner not intended by the supplier.

For repair or service please contact your PLACE OF PURCHASE.

If this item was purchased directly from Altronics please make a warranty claim by:

1. FOR MAIL ORDER CUSTOMERS (includes school and trade orders),

a) Ringing us on 1300 797 007 and quoting your tax invoice number.

b) Upon contacting Altronics, we will issue an R.A. (Return Authorisation). As Altronics have a number of service agents throughout Australia, a copy of the R.A. will be emailed, faxed or mailed to you with full instructions of how and where to send the goods. The freight for shipping goods back to Altronics for all repairs is at the customer's expense.

c) A copy of the R.A. form, (or at the very minimum, the R.A. number) must accompany the goods to effect the repair.

d) Altronics will pay the return freight to the customer where the warranty claim has been accepted.

e) Please quote the R.A. number in any correspondence to us.

2. FOR OVER THE COUNTER PURCHASES to make a warranty claim, please return the goods to us in any of our stores, with a copy of your proof of purchase (tax invoice).

a) Upon leaving the goods at one of our stores, an R.A. number will be issued to you.

b) Once repaired, you will be contacted, advising that the goods are ready to be collected from the store.

It is at Altronics' discretion as to whether the goods will be repaired or replaced (whilst under warranty); and as to whether identical goods will be used to replace the item due to changes of models / products.

Note: Under no circumstances should you attempt to repair the device yourself or via a non-authorised Altronics service centre, as this will invalidate the warranty!

Our goods come with guarantees that cannot be excluded under the Australian Consumer Law. You are entitled to a replacement or refund for a major failure and for compensation for any other reasonably foreseeable loss or damage. You are also entitled to have the goods repaired or replaced if the goods fail to be of acceptable quality and the failure does not amount to a major failure.

# DYNALINK

## H 8182A - Articulated Flat Screen Bracket

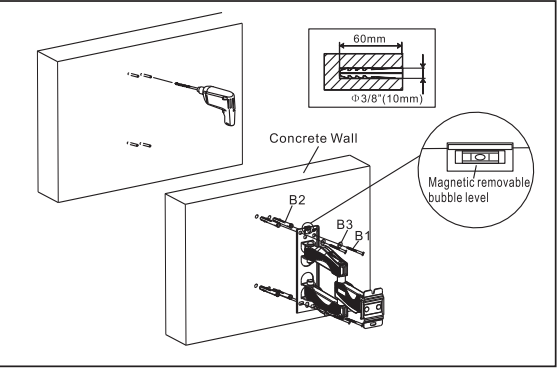
### Operating Instructions



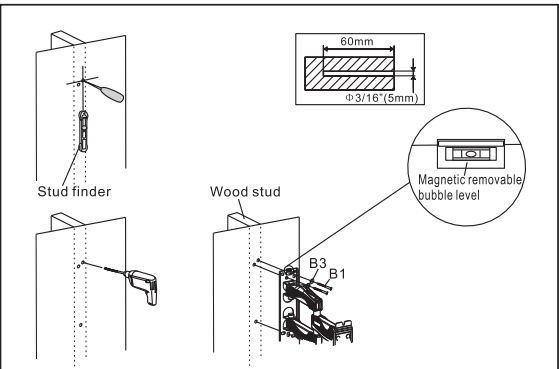
Note: Please read this manual thoroughly to get the most out of the product and ensure long-term, trouble-free use. Keep this manual for future reference.

# Installation Instructions:

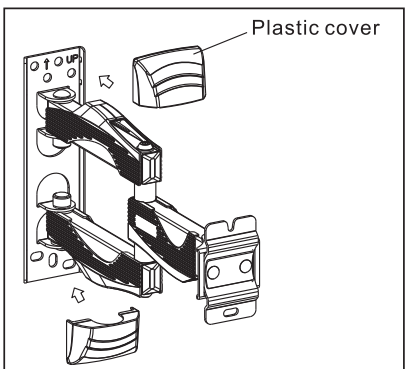
## Step 1A: Solid Concrete Mounting



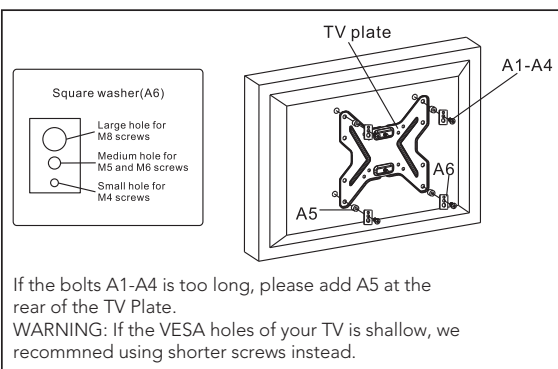
## Step 1B: Wood Stud Mounting



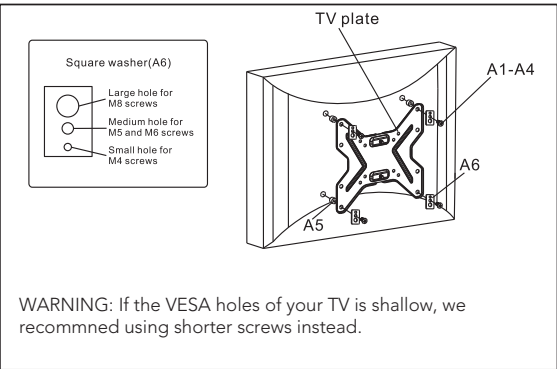
## Step 2: Put covers on



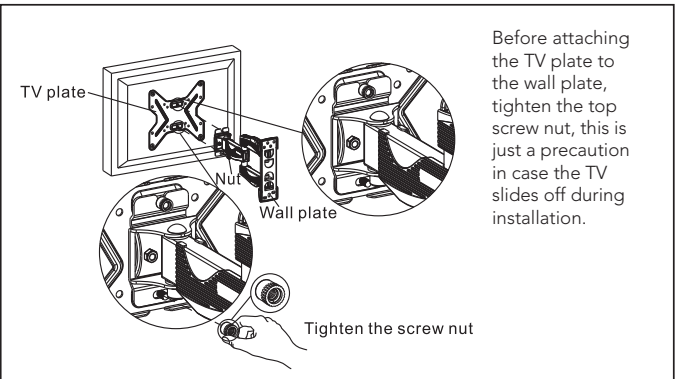
## Step 3A: Attaching the VESA plate to the monitor (flat screens)



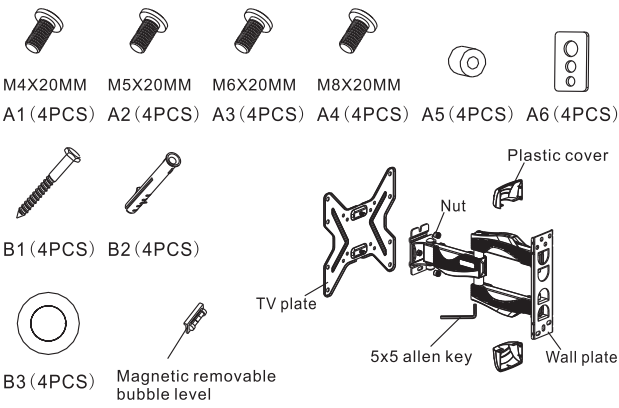
## Step 3B: Attaching the VESA plate to the monitor (Curved back)



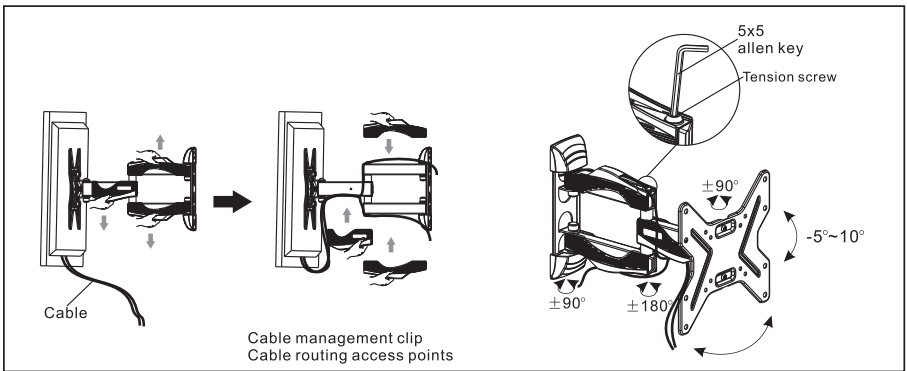
## Step 4: Hang the TV onto the wall plate



## Contents:



## Step 5:



## CAUTION

- This product contains small items that could be a choking hazard if swallowed. Keep these items away from young children.
- Make sure these instructions are read and completely understood before attempting installation. If you are unsure of any parts of this installation, please contact a professional installer for assistance.
  - The wall/mounting surface must be capable of supporting the combined weight of the mount and the disaply, otherwise the structure must be reinforced.
  - Safety gear and proper tools must be used. A minium of two people are required for this installation. Failure to use safety gear can result in proerty damage, serious injury or death.
  - Please check joint parts every two months making sure the screws are not loose.

This product was designed to be installed on wood stud walls and solid concrete walls. Before installing make sure the wall can support combined load of equipment and hardware. Never exceed the maximum load capacity of 25KG or this may result in product failure or personal injuries.

Note: This product is intended for indoor use only. Use of this product outdoors could lead to product failure or personal injuries.