



D 4238

Wireless Handheld Presenter

With Laser Pointer

WIRELESS PRESENTER WITH LASER POINTER USER GUIDE

Introduction

Congratulations on your purchase of the Wireless Presenter with Laser Pointer. This combination presenter laser pointer features four control buttons that emulate the command keys in PowerPoint®. It offers true plug-and-play capability with no need for software drivers and the long range 2.4GHz technology allows for effective presentations up to 30 feet (10m).

Package Contents

Wireless Presenter with Laser Pointer
Ultra-Slim Wireless Receiver
1xAAA battery
User Guide

System Requirements

Hardware
USB interface

Operating System: Microsoft Windows Vista*
Microsoft Windows 7
Microsoft Windows 8
Microsoft Windows 10
Mac OS X
Linux

1

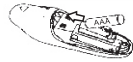
Setting up your Wireless Presenter Installing the Batter

If the presenter is on, slide the on / off switch located on the side of the presenter to the "off" position.



Battery Cover

Insert the supplied battery. Ensure the positive (+) and negative (-) ends of the battery match the polarity indicator inside the battery compartment.



Slide the battery cover back into position until it "clicks" firmly into place.



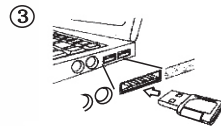
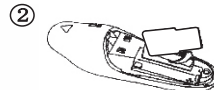
Turn on the presenter



2

Connecting the Receiver

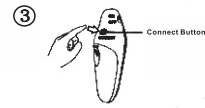
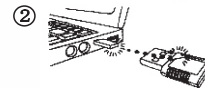
Plug the USB receiver into an open USB port on your computer. Your computer's operating system will identify the receiver and install the default driver.



3

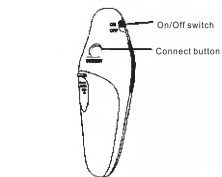
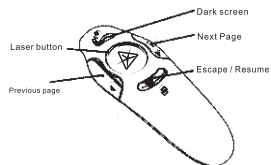
Synchronizing your Wireless Presenter

The receiver and presenter should sync up automatically. However, in some cases they may not synchronize properly due to environmental interference or other causes. If this is the case, you must re-establish the link.



4

Using your Wireless Laser Presenter



5

Safety Measures

1. To avoid possible eye damage, never point the presenter's laser at people, especially their faces, or look directly into presenter's laser beam.
2. Avoid pointing the presenter's laser beam at a mirror or other highly-reflective surface.
3. Keep the presenter away from young children.
4. Never view the presenter's laser beam using telescopic devices, such as a microscope or binoculars.
5. Any attempt to disassemble, adjust or repair the presenter may result in exposure to laser light or other safety hazards.

Trouble shooting

What do I do if the response time of the presenter is slow or it intermittently stops working?

1. Make sure that the presenter is within 30 feet (10m) of receiver
2. Increase the distance between the presenter's receiver and the base units of other wireless devices.
3. Turn off any wireless devices and their base units that are near the presenter's receiver.
4. Replace the battery.
5. Synchronize the receiver and presenter. See "Synchronizing Your Wireless laser Presenter"

6

Product Specification

Transmitter

RF	2.400GHz-2.483GHz
Battery Type	AAA Battery
Effective RF Communication Range	10 meters Max
RF Output Power	1mW
Power Consumption	30 mA Max

Receiver

RF	2.400GHz-2.483GHz
Interface	USB1.1/2.0
Power	USB Bus Power 5V DC

7