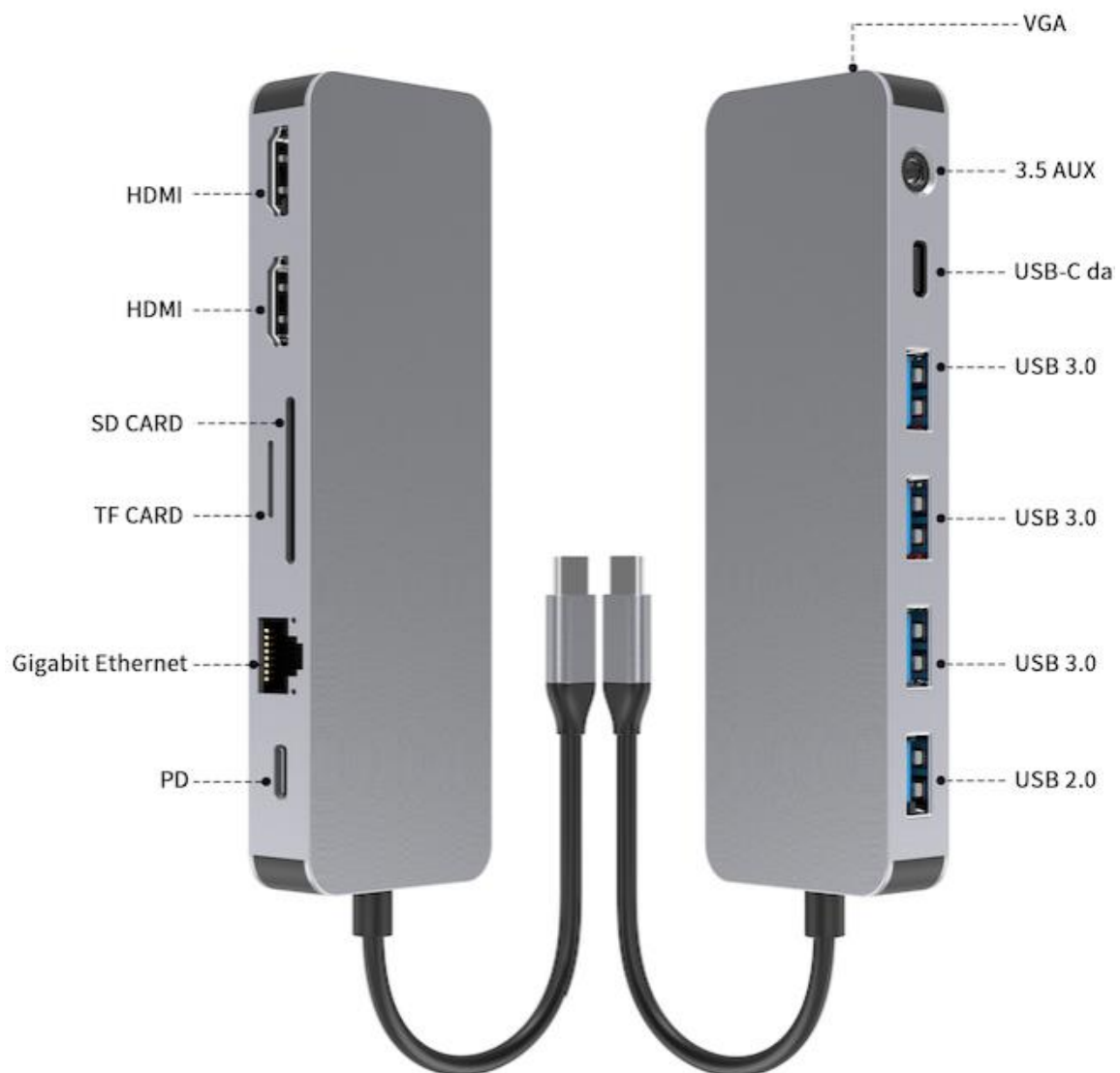


13 in 1 USB C Hub Multiport Adapter

Manual

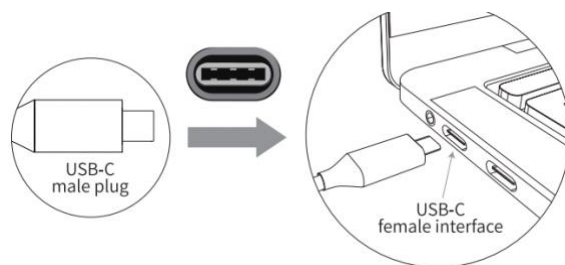


Thank you for choosing our products, please use the USB-C Hub according to the user manual. USB-C multiport adapter brings convenience to your life and work. If you have any questions, please contact us via Purchase platform message. Our excellent customer service team will quickly solve your problems.

1.0 Package Contents

1. 13 in 1 USB-C Hub *1
2. Instruction *1

2.0 How to use it?



- Make sure your equipment and connection cable are working properly before you use them.
- USB-C interface supports forward and backward plug and play, and there is no need to install drivers for the HUB.
- When removing the device, please remove the device according to the system specification, otherwise it may cause data loss and equipment damage.
- It is not recommended to use the USB-A interface to charge other devices because the current is low and the charging speed is slow.

If the product does not work properly, please check as follows:

- (1) Know whether the model of your original equipment is compatible with the product;
- (2) Check whether the original equipment and connecting wire can be used normally;
- (3) Replace the equipment or connect the cable to operate again and verify;
- (4) For more problems, please contact us through purchasing platform information.

3.0 PRODUCT SPECIFICATIONS

| | | | | |
|---------------|-----------------------------|-------------------------|--|-----------|
| Model | 13 IN 1 HUB | | | |
| Material | Aluminum Alloy / ABS | | | |
| interface | 3*USB 3.0 1*TF 1*RJ45 | 2*HDMI 1*SD 1*VGA | 1*USB-C(PD) 1*USB C Data 1*3.5mm Audio | 1*USB 2.0 |
| Dimension | 133*42*14mm | | | |
| Weight | 85g | | | |
| Certification | CE FCC KC WEEE ROHS | | | |
| Support | Mac OS/Windows/Android | | | |
| Plug and Play | No need to install drivers | | | |

4.0 PRODUCT PARAMETERS

| | |
|-------------------------|--|
| PD Charging Port | support PD3.0,100W maximum power. |
| 2 HDMI Port | 2*HDMI supporting 1080p@60Hz,4K@30Hz |
| USB C Port | support Data transfer |
| Ethernet Port | compatible with IEEE 802.310base-T/100Base-Tx /1000Base-Tx |
| USB 3.0 Port | Complies with USB 3.0 specification,transfer rate up to 5Gbps,and is compatible with USB 2.0/1.1 |
| USB 2.0 Port | USB 2.0(480MB/s) |
| SD & TF Port | TF &SD card read and write |
| VGA | support resolution up to 1920*1080P VGA&2*HDMI can be displayed at the same time |
| 3.5mm Audio | 3.5mm Audio out |

5.0 COMPATIBILITY

1.Compatible with Apple MacBook,Huawei MateBook,Xiaomi notebook and more.
For example:

| | |
|----------------|---|
| Apple | MacBook Pro 2015/2016/2017/2018/2019/2020/2021 MacBook Air 2018/2019/2020/2021 |
| Huawei | MateBookX/XPro/E/E2019/13/14 |
| ASUS | Lingyao3/Pro/U306/U321/U410/ROG series LingyaoX series /U5100UQ |
| Lenovo | Xiaoxin Air 12 inch/Yoga5 Pro/6 Pro/900 RescuerY7000/Y7000P/Y9000K/ThinkPad X1 |
| HP | Shadow Elf 4 Pro/Pavilion x2/Spectre 13 Elite Book Folio G1/1050 G/Envy 13 |
| Xiaomi | Air 12.5/13.3 inches/Pro 15.6 inches /Xiaomi Gaming Book |
| Samsung | NoteBook series /GalaxyBook series |

13 in 1 USB C Hub Multiport Adapter

| | |
|------------------|--|
| Microsoft | SurfaceBook 2/Surface Go |
| Dell | XPS13/XPS15/Lingyue 5000/7000/G3/G5/G7 |

3. Compatible with Huawei P30,Mate30,Samsung S9,S10 series mobile phones and more. For example

| | |
|------------------|---|
| Samsung | Samsung Galaxy S8/S8+/S9/S9+/Note 8/9/S10/S10+ |
| Huawei | Mate 10/10 Pro/20/20Pro/20X/Rs/P20/P20Pro/P30/P30Pro Honor 20/Note 10 |
| Microsoft | Microsoft 950XL/Microsoft 950 |
| LG | LG FGF700(G5)/V300L |
| HTC | Ultra/UTC 10 |
| OPPO | R17 Pro |

6.0 PRODUCT Q&A

Question: Why doesn't my mobile hard drive work anymore?

Answer: Mechanical hard disk,solid state hard disk,etc. are high-power devices. The power of full load state is 2~10W.External PD power supply is needed to ensure the normal use of device-related functions. Conventional U-disks,mice,keyboards, etc. are small power devices that can be plugged in directly

Question: Why does the product feel hot when used?

Answer: When electronic products are used,heat will be generated. The body of this product is aluminum alloy shell, which can quickly export the heat to the surface. When the product is fully loaded, the temperature of the metal shell is about 55 degrees (the temperature of the experimental environment is 25 degrees). According to gb4943.1-2011 standard,the metal material of the equipment held in a short time shall not exceed 60 degrees.The temperature is within the standard range,so please feel free to use it;

7.0 SECURITY INFORMATION

Failure to follow the safety instructions below may result in fire, electric shock,damage or other injury.

Don't place the product in corrosive environment;

Don't use in high temperature, low temperature,humidity,dusty environment and long-term exposure to sunlight,and keep away from fire sources

The ambient temperature of the product is maintained at 0-45 C