

Altronic Distributors warrants this product for one year from date of purchase from Altronic or its resellers to the consumer. If this item is part of an installation or another product, please contact the installer or supplier for your warranty.

During the warranty period, we undertake to repair or replace your product at no charge if found to be defective due to a manufacturing fault. The warranty excludes damage by misuse or incorrect installation (i.e. failure to install and operate device according to specifications in the supplied instruction manual), neglect, shipping accident, or no fault found, nor by use in a way or manner not intended by the supplier.

For repair or service please contact your **PLACE OF PURCHASE**.

If this item was purchased directly from Altronic please make a warranty claim by:

1. **FOR MAIL ORDER CUSTOMERS (includes school and trade orders),**

a) Calling your nearest store location and quoting your tax invoice number.

b) Upon contacting Altronic, we will issue an R.A. (Return Authorisation). As Altronic have a number of service agents throughout Australia, a copy of the R.A. will be emailed, faxed or mailed to you with full instructions of how and where to send the goods. The freight for shipping goods back to Altronic for all repairs is at the customers expense.

c) A copy of the R.A. form, (or at the very minimum, the R.A. number) must accompany the goods to effect the repair.

d) Altronic will pay the return freight to the customer where the warranty claim has been accepted.

e) Please quote the R.A. number in any correspondence to us.

2. **FOR OVER THE COUNTER PURCHASES to make a warranty claim, please return the goods to us in any of our stores, with a copy of your proof of purchase (tax invoice).**

a) Upon leaving the goods at one of our stores, an R.A. number will be issued to you.

b) Once repaired, you will be contacted, advising that the goods are ready to be collected from the store.

It is at Altronic discretion as to whether the goods will be repaired or replaced (whilst under warranty); and as to whether identical goods will be used to replace the item due to changes of models / products.

Note: Under no circumstances should you attempt to repair the device yourself or via a non-authorised Altronic service centre, as this will invalidate the warranty!

Our goods come with guarantees that cannot be excluded under the Australian Consumer Law. You are entitled to a replacement or refund for a major failure and for compensation for any other reasonably foreseeable loss or damage. You are also entitled to have the goods repaired or replaced if the goods fail to be of acceptable quality and the failure does not amount to a major failure.

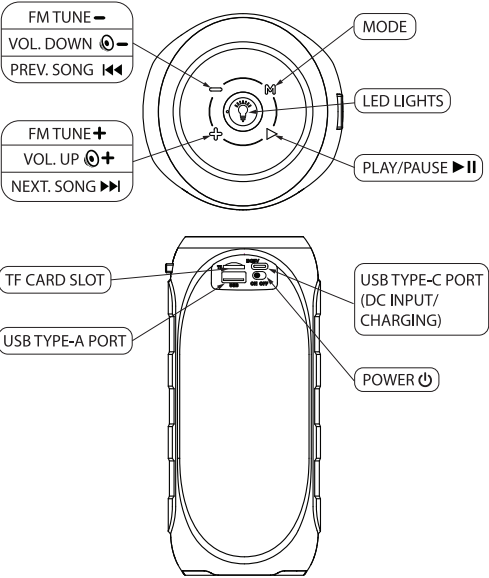
Distributed by Altronic Distributors Pty. Ltd.
Phone: (08) 9428 2199
altronic.com.au

Portable Bluetooth Speaker

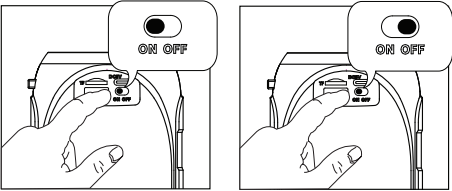
Operating Instructions



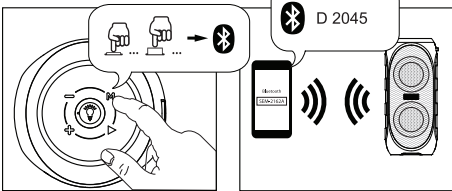
CONTROLS/ FEATURES



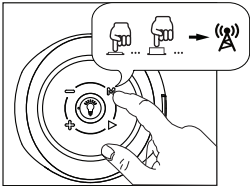
POWER ON/OFF



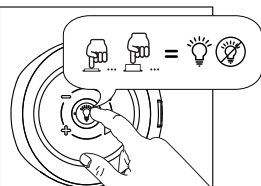
BLUETOOTH MODE



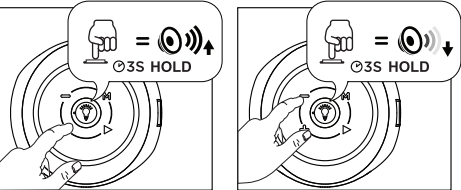
RADIO MODE



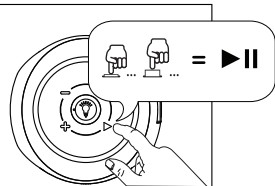
LED LIGHTING



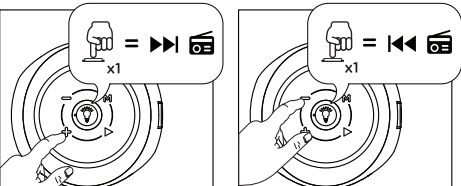
VOLUME ADJUSTMENT



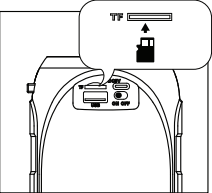
MUSIC CONTROL



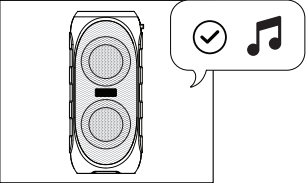
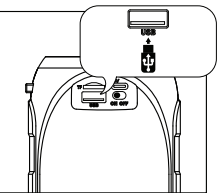
MUSIC CONTROL



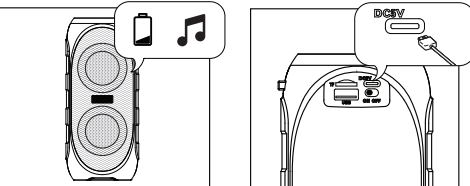
TF CARD MODE



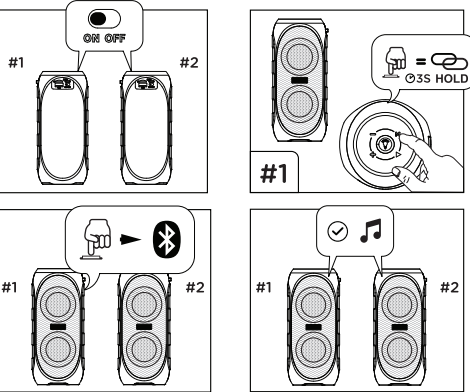
USB MODE



BATTERY CHARGE



TWS FUNCTION (TRUE WIRELESS STEREO)



SPECIFICATIONS:

Bluetooth Version:V5.1
Output Power:10W RMS @ 10% THD
Built-in rechargeable Lithium Battery:3.7V, 1200mAh
Radio:FM PLL Tuner (Internal Antenna)
Power Input: ..USB Type-C 5V DC Input (with charging cable included)
Size:195L x 87Ømm

FEATURES:

RGB beat triggered lighting with multi colour modes
USB port & micro SD slot for MP3 playback
FM Radio
IP65 rated - water resistant
Internal 1200mAh battery
10W RMS output power
5hr playback time
Internal microphone for phone calls
Portable lightweight design
Integral strap