

Altronics Distributors warrants this product for one year from date of purchase from Altronics or its resellers to the consumer. If this item is part of an installation or another product, please contact the installer or supplier for your warranty.

During the warranty period, we undertake to repair or replace your product at no charge if found to be defective due to a manufacturing fault. The warranty excludes damage by misuse or incorrect installation (i.e. failure to install and operate device according to specifications in the supplied instruction manual), neglect, shipping accident, or no fault found, nor by use in a way or manner not intended by the supplier.

For repair or service please contact your **PLACE OF PURCHASE**.

If this item was **purchased directly from Altronics** please make a warranty claim by:

1. FOR MAIL ORDER CUSTOMERS (includes school and trade orders),
 - a) Ringing us on 1300 797 007 and quoting your tax invoice number.
 - b) Upon contacting Altronics, we will issue an R.A. (Return Authorisation).
As Altronics have a number of service agents throughout Australia, a copy of the R.A. will be emailed, faxed or mailed to you with full instructions of how and where to send the goods. The freight for shipping goods back to Altronics for all repairs is at the customers expense.
 - c) A copy of the R.A. form, (or at the very minimum, the R.A. number) must accompany the goods to effect the repair.
 - d) Altronics will pay the return freight to the customer where the warranty claim has been accepted.
 - e) Please quote the R.A. number in any correspondence to us.

2. FOR OVER THE COUNTER PURCHASES to make a warranty claim, please return the goods to us in any of our stores, with a copy of your proof of purchase (tax invoice).
 - a) Upon leaving the goods at one of our stores, an R.A. number will be issued to you.
 - b) Once repaired, you will be contacted, advising that the goods are ready to be collected from the store.

It is at Altronics discretion as to whether the goods will be repaired or replaced (whilst under warranty); and as to whether identical goods will be used to replace the item due to changes of models / products.

Note: Under no circumstances should you attempt to repair the device yourself or via a non-authorised Altronics service centre, as this will invalidate the warranty!

Our goods come with guarantees that cannot be excluded under the Australian Consumer Law. You are entitled to a replacement or refund for a major failure and for compensation for any other reasonably foreseeable loss or damage. You are also entitled to have the goods repaired or replaced if the goods fail to be of acceptable quality and the failure does not amount to a major failure.

Distributed by Altronic Distributors Pty. Ltd.

• Perth • Sydney • Melbourne

Phone: 1300 780 999 Fax: 1300 790 999

Internet: www.altronics.com.au



okayo
The sound option

Operating Instructions

| | |
|----------------|--|
| C 7342B | PA with UHF Wireless Mic Receiver |
| C 7344B | PA with UHF Wireless Mic Receiver & MP3 Player |
| C 7315B | Wireless Handheld Mic |
| C 7195C | Beltpack Transmitter |
| C 7317B | UHF Wireless Receiver Module |
| C 7318 | Digital Audio Player Module |



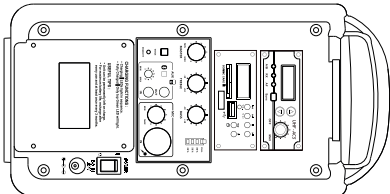
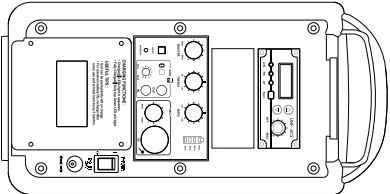
Thank you for purchasing this Wireless Portable Sound System. This manual contains comprehensive instructions on it's operation. Please read it carefully before use and this unit will perform well.

*All peripherals and accessories that are not included in the package are available separately.

Product Packages

Models C 7342B - C 7344B are powered by a sealed lead-acid battery (SLA). They are all compatible with same receiver and audio player. The available models are shown below.

- C 7342B
Wireless Portable Sound System
with UHF Receiver
- C 7344B
Wireless Portable Sound System
with UHF Receiver and MP3 Player



Accessories



C 7322 Folding Tripod

Table 1: UHF Wireless Channel Guide

| 520-544MHz Frequency | | | | | | | | | | | |
|----------------------|-------|----|-------|----|-------|----|-------|----|-------|----|-------|
| 1 | 520.1 | 17 | 542.4 | 33 | 538.3 | 49 | 526.7 | 65 | 524.8 | 81 | 522.4 |
| 2 | 543.9 | 18 | 523.9 | 34 | 536.2 | 50 | 534.3 | 66 | 536.5 | 82 | 542.6 |
| 3 | 532.1 | 19 | 537.6 | 35 | 543.7 | 51 | 540.8 | 67 | 523.2 | 83 | 526.9 |
| 4 | 525.1 | 20 | 530.6 | 36 | 529.9 | 52 | 520.5 | 68 | 534.9 | 84 | 535.6 |
| 5 | 537.9 | 21 | 542.1 | 37 | 524.4 | 53 | 535.3 | 69 | 527.3 | 85 | 540.3 |
| 6 | 522.8 | 22 | 523 | 38 | 538.1 | 54 | 529.1 | 70 | 541.4 | 86 | 531.8 |
| 7 | 535.1 | 23 | 532.5 | 39 | 521.3 | 55 | 539.6 | 71 | 524.1 | 87 | 540.1 |
| 8 | 527.5 | 24 | 528.9 | 40 | 533.5 | 56 | 530.4 | 72 | 533.9 | 88 | 525.6 |
| 9 | 541.6 | 25 | 541 | 41 | 521 | 57 | 543.1 | 73 | 529.6 | 89 | 538.7 |
| 10 | 521.5 | 26 | 520.7 | 42 | 531.2 | 58 | 522 | 74 | 540.6 | 90 | 530.1 |
| 11 | 533.3 | 27 | 531 | 43 | 522.6 | 59 | 532.3 | 75 | 526.2 | 91 | 527.1 |
| 12 | 523.5 | 28 | 525.4 | 44 | 537 | 60 | 528.4 | 76 | 543.3 | 92 | 531.5 |
| 13 | 536.8 | 29 | 542.9 | 45 | 525.8 | 61 | 537.3 | 77 | 523.7 | 93 | 533 |
| 14 | 526 | 30 | 522.2 | 46 | 541.8 | 62 | 521.7 | 78 | 534.1 | 94 | 527.7 |
| 15 | 539.4 | 31 | 534.6 | 47 | 528.7 | 63 | 543.5 | 79 | 528.2 | 95 | 539.8 |
| 16 | 529.4 | 32 | 524.6 | 48 | 539.1 | 64 | 530.8 | 80 | 535.8 | 96 | 533.7 |

Frequency Combinations 520-544MHz

1. If using 4 channels at the same time
(1) 1 2 4 5 (2) 6 7 8 10 (3) 9 11 12 13 (4) 15 16 17 18
(5) 19 21 22 25 (6) 26 27 28 29 (7) 35 36 37 39 (8) 62 63 64 65
2. If using 8 channels at the same time
(1) 1 2 4 5 6 13 16 19 (2) 35 36 37 38 39 41 44 46
3. If using 12 channels at the same time
(1) 1 2 4 5 6 13 16 19 20 21 25 34
(2) 35 36 37 38 39 41 44 46 47 53 54 55

Specifications

Overall

| | |
|-------------------------------------|--|
| Carrier frequency: | 520 - 544MHz |
| Channels: | 96 (frequency dependant) |
| LCD window: | Channel, Frequency |
| Channel adjustment: | Select using UP and DOWN buttons |
| Frequency modulation: | 24MHz max. |
| Ambient temperature: | -10°C ~ +50°C |
| Dynamic range: | 100dB |
| Total harmonic distortion (T.H.D.): | <0.5% |
| Pre-emphasis: | 50µs |
| Frequency response: | 70Hz - 16kHz |
| Wireless coverage: | 25 - 50 metre (RF power dependant) |
| Output power: | 40 watts RMS into 4Ω |
| Speaker: | 5" Neodymium driver, 1" Tweeter |
| Digital audio player: | Supports USB disk and SD card (optional) |
| Receiver: | Plug in receiver with ACS (Automatic Channel Synchronization) supports 2 receivers maximum |
| Audio input: | Mic in (6.35mm XLR combo), Aux in (stereo mixed 3.5mm) |
| Audio output: | Aux out (stereo mixed 3.5mm) |
| Controls: | Receiver, Master, Bass, Treble, Mic, Aux in |
| Power supply: | AC switching power adaptor 240V-20V 3.25A |
| Battery: | Sealed Lead Acid (SLA) |
| Charging time: | 8-12 hours |
| Running time: | 3-6 hours |
| Dimensions (DxWxH): | 200 x 170 x 276mm |
| Weight: | 4.1kg |

Digital Audio Player C 7318

| | |
|-------------------------------------|--|
| Frequency response: | 20Hz-20kHz |
| Power requirement: | 12V d.c. |
| Display: | Backlit LCD |
| Output level: | 600mV |
| Format supported: | MPEG layer 3 |
| Signal to noise ratio (S/N): | >60dB |
| Total harmonic distortion (T.H.D.): | <1% |
| Remote range: | >3 meter |
| Controls: | Play, Stop, Repeat, Next(Vol+), Prev(Vol-) |
| External audio supported: | USB disk, SD card |

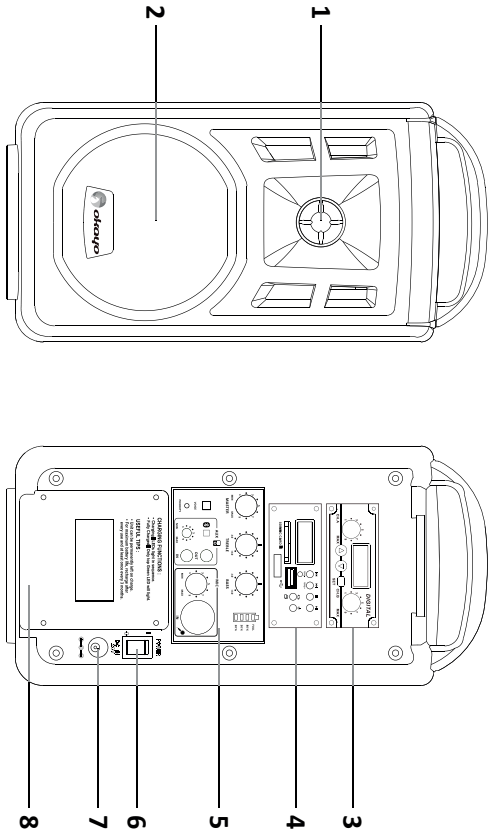
Beltpack Transmitter (C 7195C)

| | |
|---------------------------------|---|
| RF Output: | 10mW |
| Spurious Emission: | <250mV |
| Audio Input: | Mic in, Aux in |
| AF Controls: | Mute switch, hi/mid/lo switch |
| Battery: | 1.2V NiMH rechargeable x 2 or 1.5V Alkaline x 2 |
| Operating Life (fully charged): | 11 hrs (NiMH) or 14 hrs (Alkaline) |
| Dimensions: | 88 x 64 x 24mm |
| Weight (with batteries): | 170g |

Handheld transmitter (C7315B)

| | |
|---------------------|---|
| Microphone capsule: | Condenser |
| Antenna: | Internal |
| RF output power: | 10mW@Hi/3mW@Low |
| Audio control: | Talk/Mute button |
| Battery: | 2 x AA 1.2V (NiMH, 1600mAh) or 2 x AA 1.5V (Alkaline) |
| Running time: | 15 hours (NiMH), 20 hours (Alkaline) typical |
| Dimensions (DxL): | 37 x 200mm |
| Weight: | 140g (battery included) |

*Note: Unit is also compatible with C 7192C and C 7193C handheld transmitters.



Features

- 1. Tweeter (1")
- 2. Neodymium driver (5")
- 3. UHF Receiver C 7317B
- 4. Digital audio player C 7318
- 5. Control panel, battery meter, mic in
- 6. Power switch
- 7. DC input
- 8. Battery compartment door

Battery Replacement

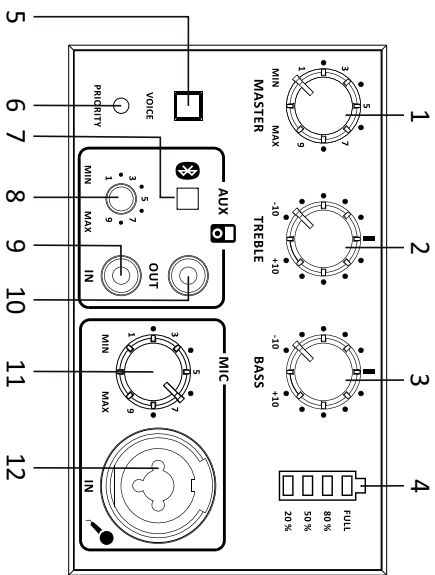


Remove screws

Take battery out

Be sure to connect battery correctly
Red = + positive
Black = - negative

Controls and Operation



1. MASTER volume control
2. TREBLE tone control
3. Bass tone control
4. Battery meter
5. VOICE PRIORITY button
When activated LED (6) will illuminate
6. VOICE PRIORITY indicator
7. BLUE TOOTH indicator
8. AUX IN/BLUE TOOTH volume control
9. AUX IN 3.5mm Ø
10. AUX OUT 3.5mm Ø
11. MIC IN (wired) volume control
12. MIC IN (wired) 6.35mm Ø, XLR combo

Bluetooth Pairing Procedure

1. Press or hold (7) in for 2 seconds to switch Bluetooth on/off.
2. You will hear a tone and the indicator will light blue. The indicator will also flash blue to indicate that it is ready to pair with Bluetooth device.
3. When it's in pairing mode, activate a Bluetooth connection scan on your smartphone or tablet device. When the search is complete, select a device named "Portable PA" from the pairing list and get it connected.
4. When the devices have successfully paired, it will sound a prompt tone again. The indicator will light steady blue.
5. You are now ready to stream audio via the Bluetooth connection from your smartphone or tablet as it's connected.
6. If a phone call is incoming during playback, the audio stream will be interrupted for the user to take the call. When the call is finished, the Bluetooth module will be relinked automatically and audio files will recommence playback from where they were interrupted.
7. When a user moves out of range for the Bluetooth connection, the audio stream will be severed until the user returns to a location within range of the module.
8. When Bluetooth is switched off, you will hear a prompt tone again.

Maintenance

Avoid heat, humidity

DO NOT place the unit in direct sunlight or on a hot surface for extended periods.

Store the unit at room temperature. Keep the unit well ventilated and away from flames or other heat sources.

Charge BEFORE you start using for the first time

After unpacking the unit for the first time, please charge the unit for about eight hours. This is absolutely necessary as the built-in rechargeable battery might have been discharged, due to transportation or being stored for extended periods, despite being fully charged at the factory prior to shipment.

Charge fully

Ensure that the battery is fully charged BEFORE you store the unit. To maximise battery life and maintain performance, make sure you charge the battery every month.

- When you need to use the unit again after a long period of storage, make sure you charge it fully for at least eight hours BEFORE any operation.
- Please also charge this unit at the end of a period of operation to ensure a longer battery life

This unit has a DOD (depth of discharge) protection circuit built in. When the POWER switch LED flashes red, this indicates the battery has depleted to a point where normal operation is not possible, it will shut down automatically. This is to prevent permanent damage to the battery due to deep discharge. If this occurs please shut down the unit and place it on charge immediately.

This unit has an inbuilt circuit to protect against overcharging. This will switch off charging once the battery is fully charged. **Useful hint: You can still operate the device whilst charging.**

Replacing battery

Make sure the substitute battery is in compliance with specifications. Using an incorrect battery may lead to explosion or malfunction.

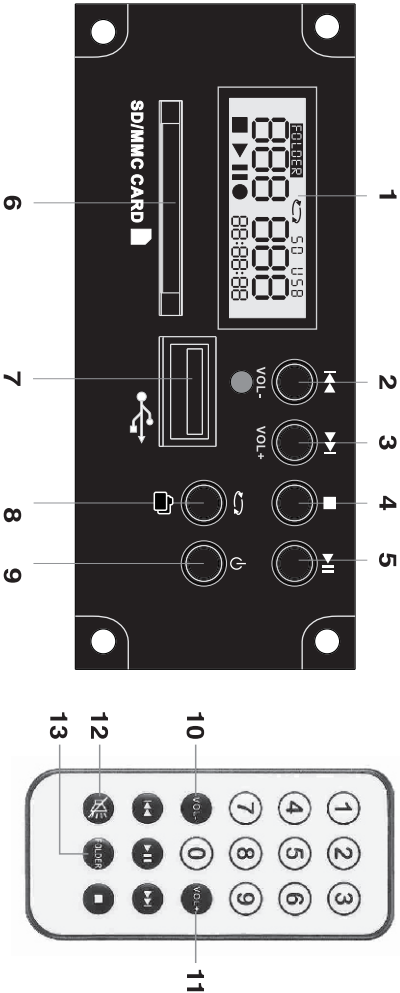
Remove the batteries from the transmitter when it will be sitting unused for an extended period to prevent damage from leaking batteries.

Charging contacts

Clean the charging contacts regularly with isopropyl alcohol to ensure a good connection with the charger.

If you are unable to remove any corrosion when it occurs, then contact your place of purchase for repair.

Digital Audio Player C 7318



Features

1. LCD window
 2. Previous track/volume down (Works during playback)
 3. Next track/volume up (Works during playback)
 4. Stop
 5. Play/pause
 6. SD/MMC card slot
 7. USB port
 8. Repeat/folder select
 9. Power
 10. Volume down (MUTE when set to minimum level)
 11. Volume up
 12. Mute
 13. Folder select
1. Press and hold (9) for one second to turn the player on or off.
 2. Press (2) to play previous audio track. Press (3) to play next audio track. Press (4) to stop any playback.
 3. Press (5) to play or pause any audio track.
 4. When both SD card and USB are installed. USB has priority for playback.
 5. Do not pull SD card out directly or it may be damaged. Just push it inwards gently and it will be ejected.
 6. Repeat/Folder Select
 - a. There are three modes for repeat during audio playback.
 - : To repeat a track.
 - : To repeat all tracks in all albums or folders.
 - : To repeat all tracks in a single album or directory.
 - b. When not in playback, press (8) to select a desired folder/album with NEXT/PREV buttons. Finally press PLAY to end the setting.
 7. During playback, press VOL+(3) to increase volume, press VOL-(2) to decrease volume.

Handheld UHF Wireless Microphone C 7315B



1. Mesh head
2. Handheld tube
3. Power indicator
4. Power ON/OFF button
5. LCD screen (channel, battery power remaining)
6. Channel adjustment and setup button
7. Talk/Mute button
8. Power HI/LOW switch
9. Battery compartment
10. Battery compartment cover
11. Talk/Push mode switch
12. Charging contacts

Battery Replacement

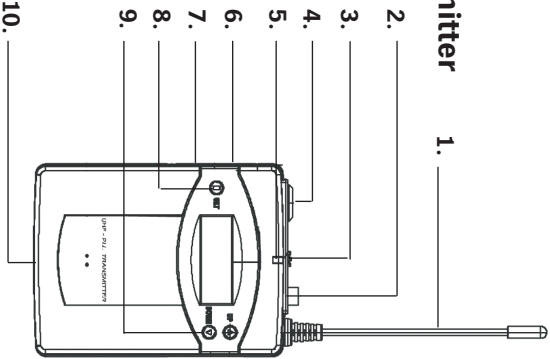
Open the battery cover and insert two AA 1.2V (NiMH 1600mAh) rechargeable or two AA 1.5V Alkaline batteries. Make sure the batteries are installed according to diagram in the battery compartment.

Operation and setup for handheld microphone C 7315B

1. Take the batteries out and choose your preferred microphone mode using the TALK/PUSH mode switch(11).
 - ※ TALK - Under this mode the microphone will activate only when the TALK/MUTE button (7) has turned green. Mute the microphone by again pressing the TALK/MUTE button which will turn red.
 - ※ PUSH - Under this mode the microphone will transmit a signal only when the TALK/MUTE (7) button is pressed and held. The microphone icon will turn green. When the TALK/MUTE (7) button is released the microphone will mute any signal and the microphone icon will turn red and start flashing.
2. Choose a preferred output power with the HI/LOW power switch (8)
 - ※ HI - Offers operational range of up to 60m (line of sight) with a current drain of 100mA
 - ※ LOW - Offers operational range of up to 30m (line of sight) with a current drain of 70mA
3. Insert the batteries and replace the cover. Press and hold the POWER ON/OFF button (4) to turn on. The power indicator (3) will illuminate.
 - ※ Power indicator illuminates green - Battery contains sufficient charge for operation.
 - ※ Power indicator illuminates red - Battery has insufficient charge for operation.
4. Turn off handheld microphone transmitter by pressing and holding the Power ON/OFF button (4) for several seconds.
5. The signal transmission is highly dependent on battery energy. Batteries with a capacity of 1600mAh and higher are recommended.

Backpack UHF Wireless Transmitter (C 7195C)

- 1. Aerial
- 2. Mute button (top)
- 3. On/off switch (top)
- 4. Mini XLR 3 Pin input socket (top)
- 5. LED power indicator
- 6. Sensitivity selection switch (side)
- 7. 3.5mm aux input socket (side)
- 8. Frequency set button
- 9. Up/down frequency adjustment buttons
- 10. Charging jack



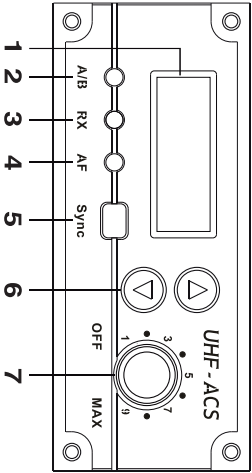
C 7195C Backpack Transmitter:

- 1. Ensure microphone is switched off before inserting batteries.
- 2. Remove battery clip. Insert two AA batteries (alkaline or rechargeable's are recommended).
- 3. Switch the top mounted power switch to ON. The power LED will illuminate red and "ON" will be displayed on the LCD screen.
- 4. A selection switch on the side of the backpack provides three level settings (low, mid & high) depending on the application or environment in which the portable PA is to be used. The mute button allows backpack to be put on standby without switching the power off.
- 5. The LCD screen will display the channel selected. To determine which frequency this channel is operating on, press the UP or DOWN frequency adjustment buttons.
- 6. Press the frequency set button for two seconds. The LCD screen will flash the currently selected channel number. You can cycle through the channels by pressing the UP or DOWN frequency adjustment buttons. Press the frequency set button again to lock in your channel selection.
- 7. The battery status is displayed on the left of the screen. When battery capacity is critical the icon will flash three times before switching the microphone off automatically.
- 8. When using with rechargeable NIMH batteries, you can use the C 7196 charging pod. This allows you to put up to two backpacks on charge at the same time. Charging time is dependant on the capacity of batteries used, typically 10-12 hours charging is required. If battery icon is flashing when charger is connected, ensure rechargeable batteries are inserted in the microphone. If batteries have failed both the battery icon and screen backlight will flash. During normal charging the battery icon will cycle through the charge "block" icons. Once full capacity is reached the full battery icon and all "blocks" will be displayed.

Transmitter Troubleshooting

- **Power LED does not illuminate after pressing power switch**
Check batteries are charged and inserted correctly.
For handheld microphone, when pressing power switch ensure you hold it down for three seconds
- **LCD shows "Err" when switching off**
Contact your place of purchase for information on resetting your transmitter.
- **LCD panel displays garbled information**
Remove batteries and re-insert them.
- **No sound output**
Check frequency of transmitter is the same as the portable PA receiver.
Check volume level of both transmitter and portable PA receiver.
For backpack transmitter, ensure mute button is not activated.
Ensure transmitter is within range of the receiver.
Check for sources of interference, large metal objects etc within range of the transmitter.
- **Signal disturbance**
When operating two transmitters in the same area, ensure frequencies selected are several channels apart. This helps to reduce crosstalk between transmitters. Also note that other wireless devices can cause interference, ensure you adjust your frequency around these devices where possible.

UHF Wireless Receiver C 7317B



- 1. LCD window
- 2. Antenna A and Antenna B indicator LED
- 3. RF signal indicator LED
- 4. AF signal indicator LED
- 5. Sync button
- 6. Channel up/down buttons
- 7. Receiver power on/off and volume control

Operation

Turn the receiver power on/off control (7) clockwise until you feel a click. A text of **[57.5]** will appear on the LCD window for about two seconds followed by a channel number. To turn it off, just turn the control counterclockwise until you feel a click. A text of **[OFF]** will appear on the LCD and disappear after a few seconds.

How SYNC works

[57.5] function can find a clear channel and assign it to a transmitter that is within range. Just turn on your microphone or transmitter and press the SYNC button. During the synchronisation process the RF LED indicator will blink for a few seconds.

Change channel manually

- Press and hold the UP or DOWN buttons (6) until the channel number is blinking.
- Select the desired channel using the UP or DOWN buttons.
- A selected channel number will be confirmed in 1 second if no more adjustments are made to it.
- Please complete the channel setup in one receiver first, and then a second one, when you have more than one receiver.
- Be sure to give a different channel number to each receiver.