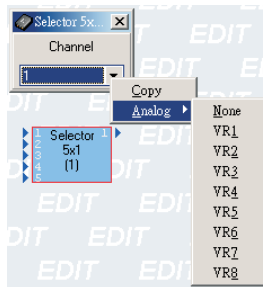


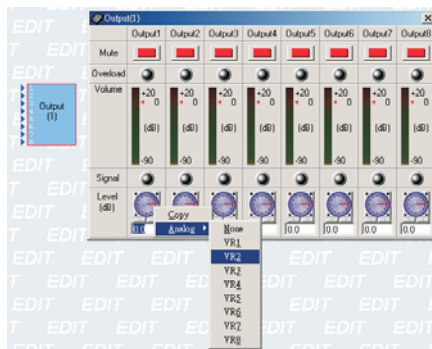
ARC

WIRING DIAGRAM

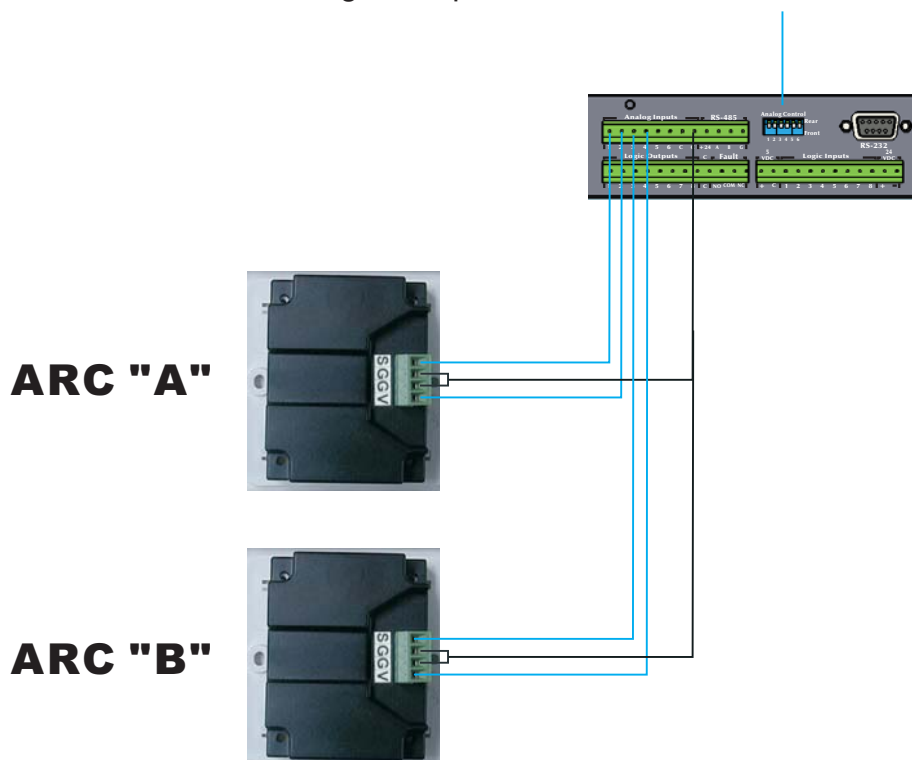
1. Source Selector : Using Selector DSP function on your DSP design window and make a relation link with analog control - VR1 for ARC "A", then follow the wiring as below.



2. Volume Control : Make a relation link with VR2 for ARC "A" on Output function. And the wiring as below:



3- Remember to switch analog control (VR1/VR2 for ARC "A", VR3/VR4 for ARC "B") from front panel to rear for ARCs using the dip next to the block connector.



** Each PDP can connect to 3 pieces of ARC (max.).
 ** When analog control switched to rear, the control on the front will be no longer functional.