



# Operating Manual

## A 4920 Pre Amplifier Balanced Mic/Line Wallplate



### OVERVIEW

This remote mic/line pre-amp wallplate accepts either a microphone or line input for conversion to a balanced high level signal. The 3V output signal is carried via Cat5e cable, suitable for distribution up to 500m without interference. Mic input is via a balanced XLR whilst the line input is via 2 x RCA sockets or 3.5mm jack. The Cat5e output cable terminates to an interface module enabling a balanced mic/line, or unbalanced line signal to be fed into the amplifier. Power is supplied via the included 24V Plugpack which is connected to the interface box. Power for the wallplate is provided through the Cat5e cable connection.

### FEATURES

- Balanced 3 pin XLR mic input
- Dual RCA or 3.5mm line input (Note : audio is internally mixed to become mono signal)
- Up to 500m transmission range
- Uses economical Cat5e cable for connection between wall plate and interface box
- Balanced mic/line or unbalanced line output
- Level control
- Wallplate powered via Cat5e cable from interface box
- 24V DC plugpack supplied

Distributed by Altronic Distributors Pty. Ltd.  
Phone: 1300 780 999 Fax: 1300 790 999 Internet: [www.altronics.com.au](http://www.altronics.com.au)

User manual revision number: 1.0 22/09/2016

# REDBACK A 4920 Balanced Mic/Line Pre-Amp Wallplate

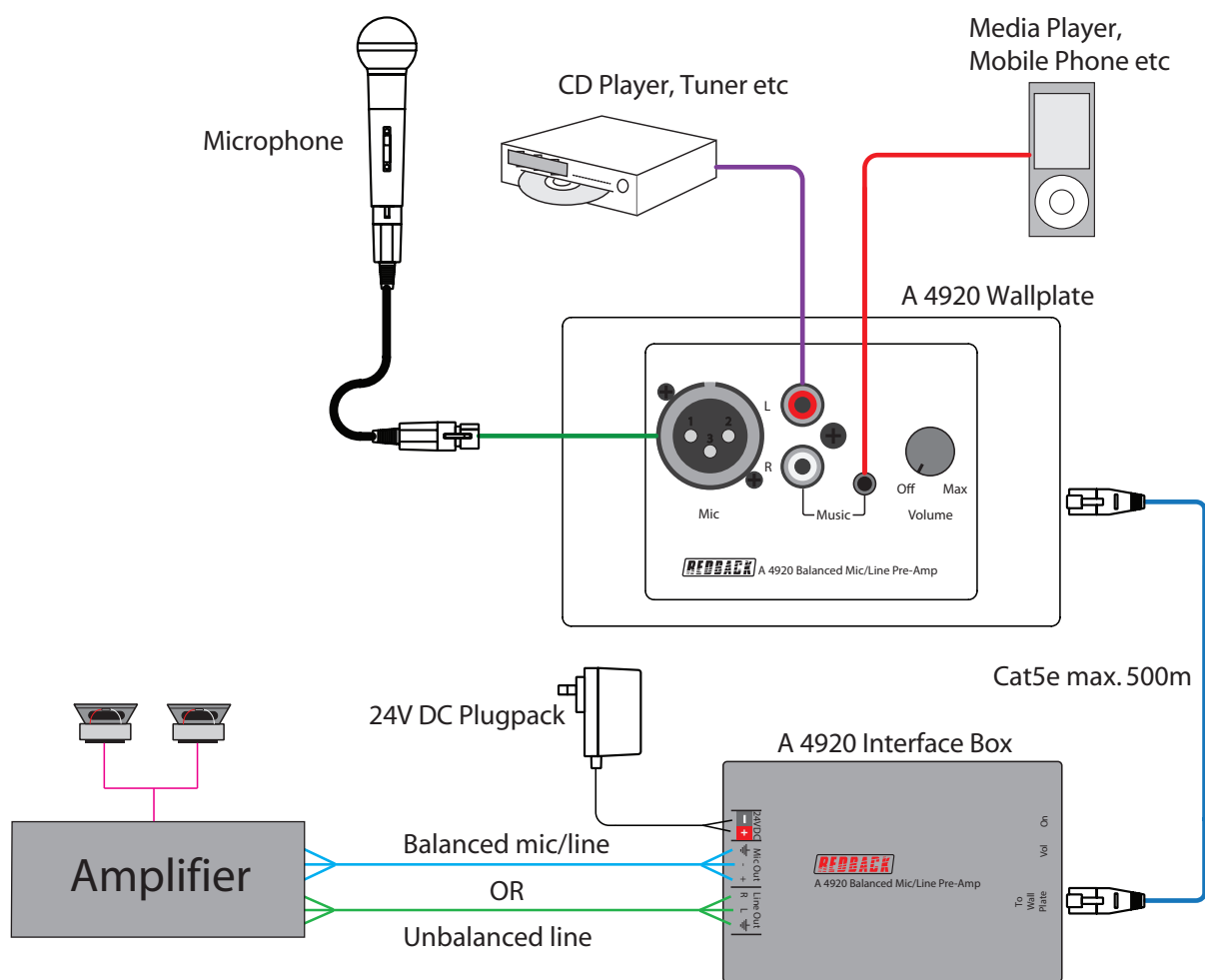


Fig. 1: Connection Diagram.

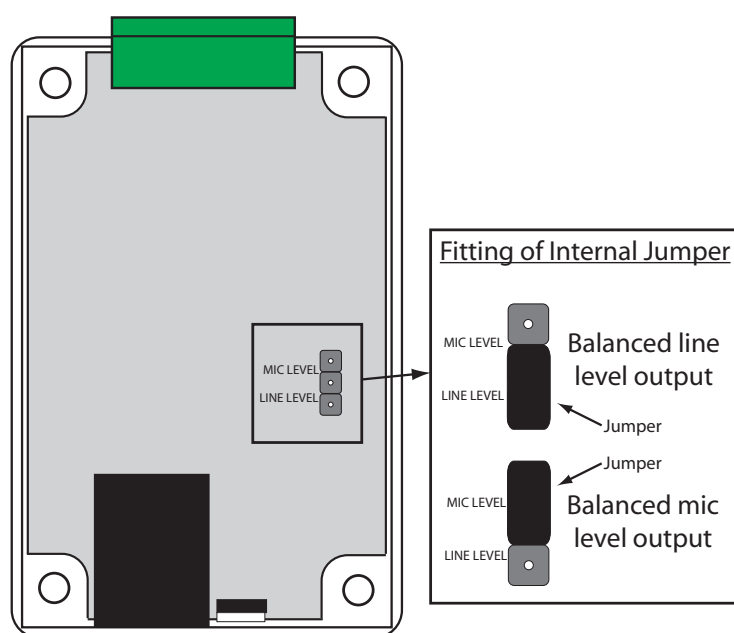


Fig. 2: Fitting of the internal jumper to select either balanced mic level output or balanced line level output. (To change the jumper, remove the lid from the interface box and then fit the jumper for desired output).