

HDMI & Infra-Red Cat5e/6 Extender UTP Balun

Operating Instructions



Features

- Transmits up to 70m without signal loss
- One-way IR signal transmission
- HDMI 1.4, HDCP 1.4 and DVI 1.0 compliant
- Compact design for discrete and flexible installation
- Supports cascading via additional HDMI loop out
- Supports video resolution up to 4k2k@30Hz YUV 4:4:4
- Supports copying EDID from receiver display or loop out display
- Supports Power over Cable (from transmitter to receiver)

Package Contents

- 1 × HDMI Transmitter
- 1 × HDMI Receiver
- 1 × IR Blaster Cable (1.5m)
- 1 × IR Receiver Cable (1.5m)
- 1 × 12V/1A DC Power Adapter
- 1 × User Manual

Overview

This extender can send HD video/audio signal and IR control up to 70m@1080p, and 40m@4K30 resolution via a single CAT5e/6 cable with zero-delay and uncompressed transmission. The HDMI loop output can be cascaded to the next extender, supporting resolution up to 4K@30Hz. Supports EDID copy function (you can choose local or remote EDID) and audio formats up to PCM7.1, Dolby True HD, DTS HD. Perfect for use in homes, conference rooms and education spaces.

Specifications

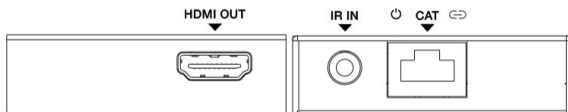
Technical	
HDCP Compliance	HDCP 1.4
HDMI Compliance	HDMI 1.4
Video Bandwidth	10.2Gbps
Video Resolution	Up to 4K @ 30Hz
Audio Support	Up to 7.1CH HD audio/Dolby True HD/DTS HD
Input TMDS Signal	3.3 Volts
Input DDC Signal	5.0 Volts/P-P
Connection	
Transmitter	Input: 1 x HDMI Type A [19-pin female] Outputs: 1 x HDMI Type A [19-pin female] 1 x IR OUT [3.5mm Stereo Mini-jack] 1 x CAT OUT [RJ45, 8-pin female]
Receiver	Inputs: 1 x IR IN [3.5 Stereo Mini-Jack] 1 x CAT IN [RJ45, 8-Pin Female] Outputs: 1 x HDMI Type A [19-pin female]

Specifications

Mechanical	
Housing	Metal Enclosure
Colour	Black
Dimensions (W) × (D) × (H)	79.5 × 69 × 16.5mm
Weight	Transmitter: 132g, Receiver: 130g
Power Supply	12V/1A DC
Power Consumption	Transmitter: 1.86W, Receiver: 0.87W
Operation Temperature	0°C ~ 40°C
Storage Temperature	-20°C ~ 60°C
Relative Humidity	20~90% RH (non-condensing)

Operation Controls and Functions

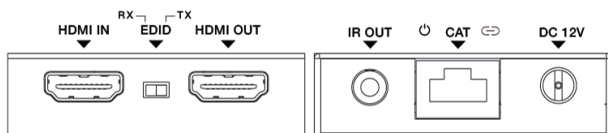
Receiver Panel



No.	Name	Function Description
1	HDMI OUT	HDMI signal output port. Connect to HDMI display device such as HDTV.
2	IR IN	Connect to IR receiver cable, the IR signal will emit to the IR OUT port of the transmitter.
3	Power LED	When the receiver is powered on, the LED will be on.
4	CAT	CAT input port. Connect to the CAT output port of the transmitter with CAT5E/6 cable.
5	Digital signal indicator light	<ul style="list-style-type: none"> Light on: HDMI signal with HDCP. Light flashing: HDMI signal without HDCP. Light off: No HDMI signal.

Operation Controls and Functions

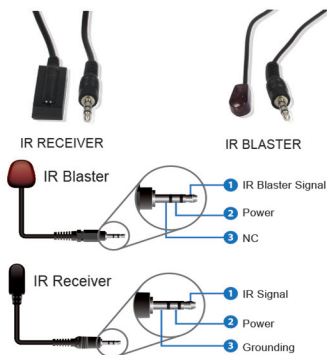
Transmitter Panel



No.	Name	Function Description
1	HDMI IN	HDMI signal input port. Connect to HDMI source device such as DVD or Set-top box.
2	EDID DIP switch	The switch is used for selecting EDID: Switch to the right position, the extender will copy HDMI loop out display EDID information to signal source; Switch to the left position, the extender will copy Receiver display EDID to signal source.
3	HDMI OUT	HDMI signal loop out port. Connect to HDMI display device such as HDTV.
4	IR OUT	Connect to IR blaster cable, the IR signal is from the IR IN port of the receiver.
5	Power LED	When the transmitter is powered on, the LED will be on.
6	CAT	CAT output port. Connect to the CAT input port of the receiver with CAT5E/6 cable.
7	Digital signal indicator light	<ul style="list-style-type: none"> ▪ Light on: HDMI signal with HDCP. ▪ Light flashing: HDMI signal without HDCP. ▪ Light off: No HDMI signal.
8	DC 12V	DC 12V power supply port.

Operation Controls and Functions

Wiring Details



Application Example

