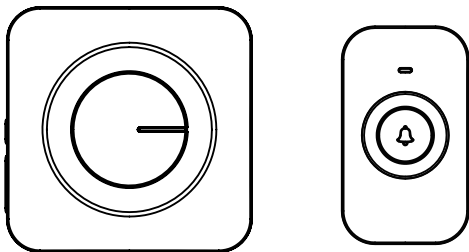


**DYNALINK**

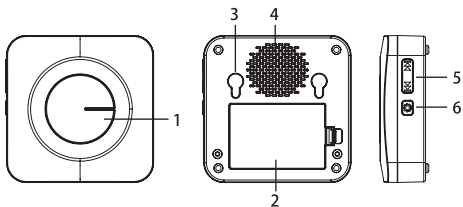
# User manual



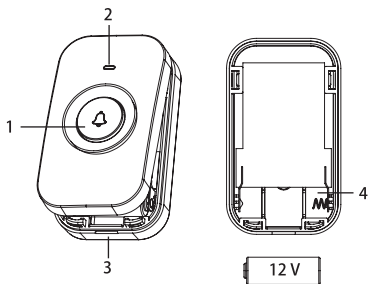
## Wireless doorbell

A 0328

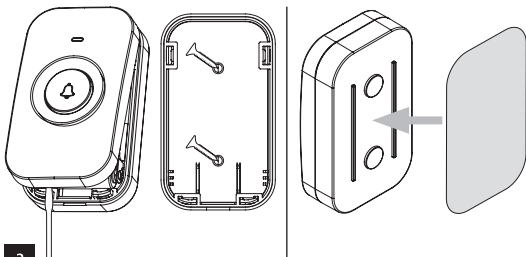
CE



1



2



3

## GB | Wireless Doorchime

The set consists of a doorbell button (transmitter) and a chime (receiver). The doorbell is powered by 3× 1.5 V AAA batteries. The transmission between the button and the chime is done via radio waves at a frequency of 433.92 MHz. The range depends on local conditions and reaches up to 180 m in open spaces without interference.

The set has a so-called "self-learning" function – the button is able to generate its own pairing code which is then received by the chime and stored in its memory. The set can thus be expanded with additional buttons. Their "self-learning" function also prevents them from affecting neighbouring doorbells.

For proper usage of the wireless doorbell, read the instruction manual thoroughly.

### Specifications

Transmission range: up to 180 m in an open area (can drop down to one fifth in a busy area)

Transmission frequency: 433.92 MHz, 5 mW e.r.p. max.

Button: water resistant; enclosure rating IP56

Pairing of chime with buttons: self-learning function

Pairing capacity: maximum of 8 buttons

Number of ringtones: 52

Chime power supply: 3× 1.5 V batteries (type AAA)

Button power supply: 1× 12 V battery (type A23)

Includes: double-sided adhesive tape

#### Chime Description (see Fig. 1)

1 – bell LED	4 – speaker
2 – battery compartment	5 – ringtone change button
3 – holes for hanging	6 – pairing/volume setting button



#### Button Description (see Fig. 2)

1 – ring button	3 – hole for opening the battery cover
2 – button LED	4 – battery compartment

#### Button Installation (see Fig. 3)

#### Pairing the Button with the Chime



1. Remove the rear cover of the button by inserting a screwdriver into the hole on the bottom side. Insert a 12 V battery, type A23, into the button. When inserting a battery, make sure to observe the correct polarity!
2. Insert 3× 1.5 V AAA batteries into the chime. When inserting the batteries, make sure to observe the correct polarity.  
Use alkaline batteries only; do not use re-chargeable batteries.

3. Then, long-press the pairing button  on the chime for ca. 5 seconds. The chime LED will light up; release the  button. The chime will switch to self-learning pairing mode which lasts for 25 seconds. During this time, press the ring button. The chime will ring and the button is now paired with the chime. This automatically ends self-learning mode.
4. Re-assemble the button.
5. To pair multiple buttons, repeat the process for each button from step 1.



*Note: The chime has an internal memory where it stores the codes of the currently paired buttons.*

*Therefore, there is no need to pair buttons again after replacing batteries. Every time batteries are changed in a doorbell, the currently set ringtone will sound.*

### **Wiping the Memory of Paired Buttons**

Insert 2 AAA batteries into the doorbell, then press and hold the  button. Insert the remaining third AAA battery into the doorbell. The doorbell's LED will flash and then remain lit. Release the  button; the LED will turn off. This will erase the memory of all paired buttons.

### **Ringtone Selection**

1. Repeatedly press the ringtone change button  or  located on the chime.
2. Each press of the button will play a different ringtone. The last ringtone played is the one that will be used.

### **Setting the Bell Volume**

Repeatedly press the  button on the chime.

Each press changes the volume 100 % – 75 % – 50 % – 25 % – 0 %.

### **Installation of the Doorbell (Transmitter) Button**

1. Begin by pairing the button with the chime.
2. Before installation, check that the pair works reliably in the chosen spot.
3. Remove the rear cover of the button by inserting a screwdriver into the hole on the bottom side.
4. Use the double-sided adhesive tape (included) or two screws to fix the rear portion of the cover to the wall. See Button Description/Installation. Although the button is weather resistant, choose a location where it is protected, e.g. in a wall recess.
5. Re-assemble the button.
6. Press the button to ring the chime. Pressing is accompanied by LED illumination indicating the button has sent a radio signal. The chime plays the selected ringtone.

*Note: The doorbell button (transmitter) can be placed on wood or brick walls without issue. However, never place the button directly onto metal objects or materials containing metal, such as plastic windows or doors that have a metal frame. In such cases, the transmitter will not work properly.*

## **Installing the Chime (Receiver)**

1. The doorbell is intended for indoor use only.
2. The transmission range (max. 180 m) is influenced by local conditions, such as the number of walls through which the signal passes, metal door frames and other elements which affect the transmission of radio signals (presence of other radio devices operating at a similar frequency, such as wireless thermometers, gate controls etc.). Transmission range can decrease drastically due to these factors.

## **Troubleshooting**

### **The chime is not ringing:**

- The chime may be out of range.
  - Change the distance between the button and the chime; the range may be affected by local conditions.
- The button battery may be drained.
  - Replace the battery. Make sure it has the correct polarity. Pair the button with the chime again.
- The chime is not powered.
  - Check the batteries in the chime, or replace with new ones.

## **Upkeep and Maintenance**

The wireless digital doorbell is a sensitive electronic device. Therefore, it is necessary to observe the following precautions:

- The chime (receiver) is designed for indoor use in dry environments only.
- Periodically check the functioning of the doorbell button and replace the battery in a timely manner. Use only quality alkaline batteries with the prescribed parameters.
- When the doorchime is not used for a long time, remove the batteries from the chime and the button.
- Do not subject the button or chime to excessive vibrations and shocks.
- Do not subject the button or chime to excessive heat and direct sunlight or moisture.
- To clean the device, use a slightly moistened cloth with a small amount of detergent; do not use aggressive cleaning agents or solvents.
- This device is not intended for use by persons (including children) whose physical, sensory or mental disability or lack of experience and expertise prevents safe use, unless they are supervised or instructed in the use of the appliance by a person responsible for their safety. Children must always be supervised and must never play with the device.



Do not dispose with domestic waste. Use special collection points for sorted waste. Contact local authorities for information about collection points. If the electronic devices would be disposed on landfill, dangerous substances may reach groundwater and subsequently food chain, where it could affect human health.

-