

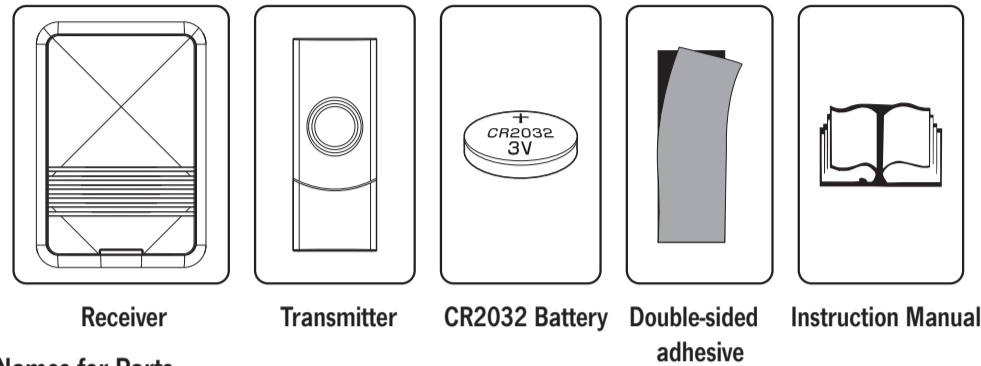
# WIRELESS DOOR CHIME KIT INSTRUCTION MANUAL

## Altronics Part No. A 0324 Auto-learning Code Door Chime

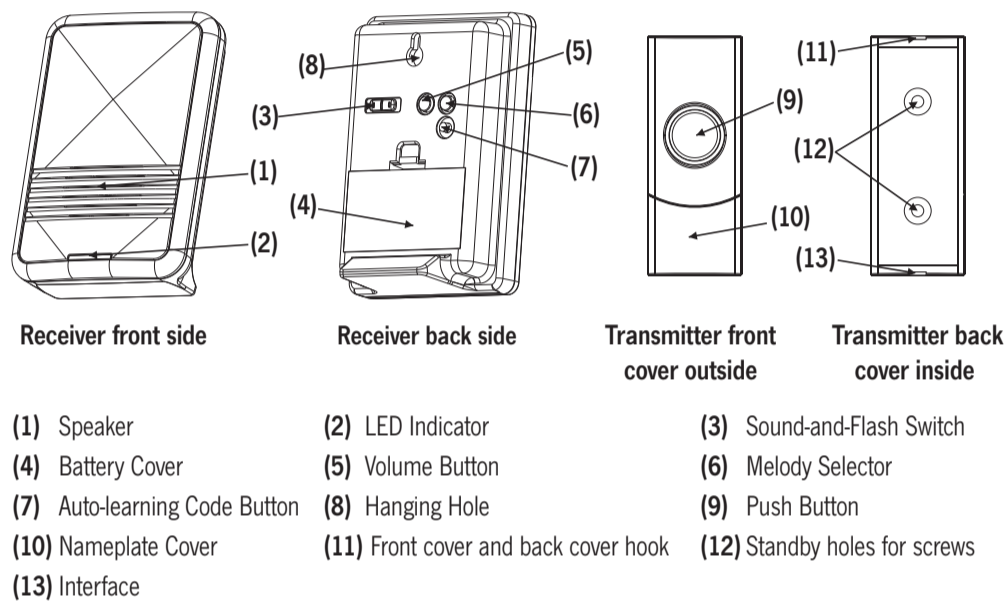
It is very important to install and operate this product according to the following instructions. Failure to do so may render your guarantee void.

### Accessories List

The door chime kit comes with:



### Names for Parts



1

### Functions Instruction

#### Door Chime Operation

Press the push button on the Transmitter unit once, it sends a wireless signal to the Receiver which will sound. The sound will stop as soon as the melody ends. For repeat sound, press the button again. Hold the button in will NOT repeat the sound.

#### Melody Selection

There is a melody selector located at right on the back of the door chime. Press the selector to change different melody.

#### Sound and Flash

There is a switch at left on the back of the Receiver. Slide the switch to the left position, the Receiver will work only with sound; slide to the middle position, only LED flash; slide to the right position, sound and LED flash.

#### Volume Adjustment

There is a volume button between melody selector and sound-and-flash switch. Press it to adjust the sound volume to be high, medium and low.

#### Auto-learning Code Button

There is an auto-learning code button under the melody selector. If user wants an additional Transmitter to work with the Receiver, he or she needs to press the auto-learning code button once and the Transmitter can work with the Receiver. (Please see detailed operation Auto-learning Code Set Up in the manual).

#### Nameplate

There is a nameplate position on the Transmitter. It is for user's signature on it as identification. User needs to remove the nameplate cover and put a suitable size label with his / her name or other information. Then cover it. (Label is not included.)

#### Important

1. Receiver is designed for indoor use only.
2. Do not expose either unit directly to rain or immerse in water.
3. Do not mount either unit close to fireplace or expose to high temperature.
4. If not in use for long periods, remove the battery from compartment to prevent leakage.
5. Dispose of old batteries in accordance with the relevant legislation.

4

### Notes before Installation

1. Before installation and operation, you will require a drill, a cross-headed screwdriver, a flat head screwdriver, 2×AA 1.5V size batteries, fixing screws and wall plugs. All of these are not supplied with this kit.
2. Do not mount the Transmitter onto any metal surface or UPVC doorframes, as this will reduce the operation range.
3. Avoid positioning above heat sources such as radiators, or in damp areas such as a kitchen or bathroom.

### How to use the door chime kit?

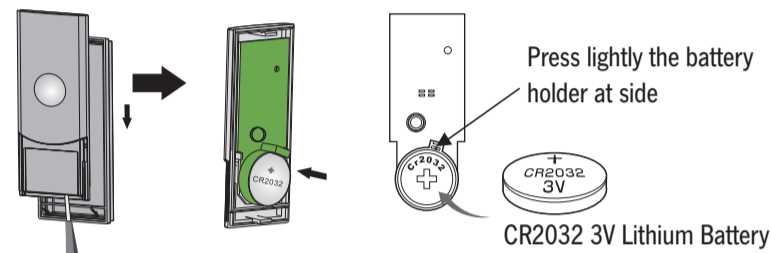
Pressing the Transmitter, a wireless signal will be sent to the Receiver. The Receiver will be activated and sound. The operating range is 80m ( in the open air ) and you can use the Receiver virtually anywhere at home (only indoor use). However, the transmission range will be reduced if the signal is transmitted through a number of walls or ceilings and Metal or UPVC doorframes can also reduce the operating range.

### Battery Installation

#### Transmitter Unit

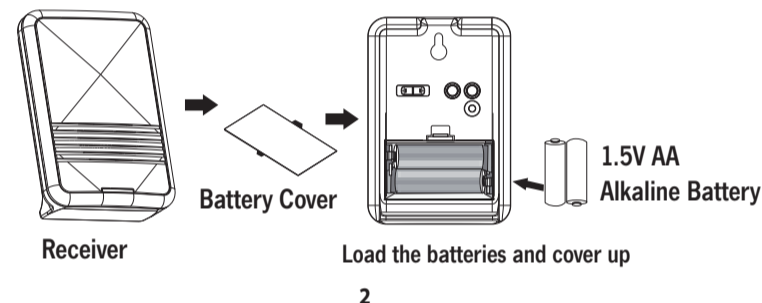
Transmitter uses a 3V CR2032 battery (included).

Open the Transmitter (by pushing in the interface located at the bottom with a flat screw driver) and place the battery. Please note with the correct battery polarity. To replace a new battery, follow the same procedure.



#### Receiver Unit

Remove the battery cover and insert 2×AA 1.5V batteries (not included); Ensure battery polarity match the internal markings.



2

### User Hints

If the Receiver does not sound, please check the following:

- Flat batteries in either Transmitter or Receivers-change the batteries.
- Wrong battery polarity in either Transmitter or Receivers-reinsert the batteries.
- Units are out of range-Operate the Receiver within the operation range.

### Specification

#### A. Transmitter unit

Power: 1×3volts CR2032 battery (included)

#### B. Receiver unit

Power: 2x1.5 volts AA alkaline batteries (not included)

Operating Temperature: -30°C to +40°C

Operating Distance: 80 meters in the open field (265ft approx.-in open field and suitable conditions)

Selectable Tone: Total 36 melodies available

Digital Code Type: Auto-learning

### What is Auto-learning Code?

The Transmitter sends wireless signal to the Receiver. The Receiver would automatically register and memorize the signal as an operation code. So the Transmitter can work with the Receiver by this code.

### Auto-learning Code Set Up

The Door Chime Kit is equipped with auto-learning operation code ability.

1. Operation for 1 transmitter and 1 receiver  
After battery installation on both Transmitter and Receiver, press the Transmitter once to generate a new operation code. The Receiver will sound, which indicates that a new operation code is registered and memorized.
2. Interference from another door chime operating nearby (For example, Receiver sounds for no reason):  
Remove the batteries from the Receiver and rest for 30 seconds. This will erase the memory. Insert the batteries, and then the Transmitter and the Receiver are ready for the new code registration.
3. Operation for the 2nd / 3rd / 4th / 5th Transmitters and the receiver (There is only 1 Transmitter included):
  - (a) Load the batteries into the Transmitters, and the Receiver is ready for the new code registration.
  - (b) Press the auto-learning code button on the back of the Receiver once, and it will be ready to receive signal sent from the second Transmitter. Press the button of the Transmitter, the Receiver will sound to indicate that new operation code is registered and memorized. Thus the second Transmitter works successfully with the Receiver. For the 3rd, 4th, and 5th Transmitters, please operate in the same way to work with the Receiver.
  - (c) It is important to remember that when you replace the run-out batteries with new ones that you will need to follow the same procedure of the auto-learning code set-up as above.

5

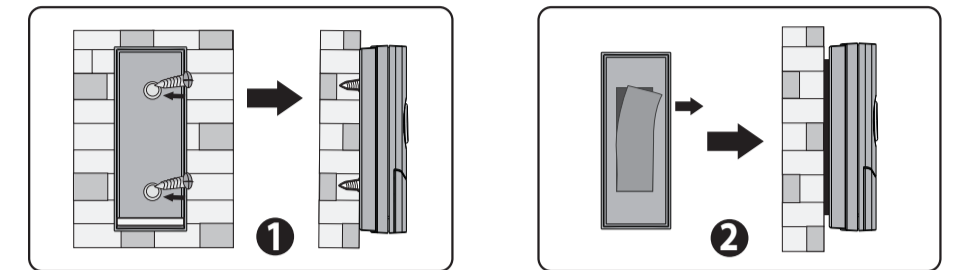
### Wall Mount

To install you will require a drill and cross-headed screwdriver.

**IMPORTANT:** Before you drill any hole in the wall, please ensure there are no cables or pipes nearby that you could accidentally damage.

### Transmitter Unit

1. Open the Transmitter with screw driver and separate the front cover from back covers, as mentioned before. Penetrate the two standby holes at the back cover with two screws. Then fix the screws on the wall at suitable height. Mounting on UPVC or metal doorframe surfaces will reduce the transmitting range. (As picture 1)
2. Or you can stick the Transmitter with the double-sided adhesive tape. (As picture 2)

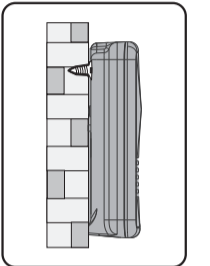


### Receiver Unit

Fix a screw on the wall. Then hang the Receiver by the hole at the back of the unit.

**Important:** Test the Receiver before drilling any holes to ensure it is within operating range.

**Note:** As an alternative, the Receiver can also be placed on a flat surface, such as a table.



3

### Notes:

- (a) If the Receiver sounds for no reason during the digital code setting, it is indicated that it has been interfered by other similar Door Chime nearby, reset the auto-learning code as per point 2 above.
- (b) 1 Receiver can only work with maximum 5 Transmitters at the same time.

**IMPORTANT: PLEASE KEEP THESE INSTRUCTIONS FOR FUTURE REFERENCE WHEN REPLACING BATTERIES**

6