

**Surface Mount Car Accessory Socket**



A surface mount socket with rubber cap to prevent dust buildup. 6.3mm spade terminals. Will lock when mated with P 0662. P 0649: 87L x 48H x 55Wmm.

Price Each	RRP	4+	10+
P 0649 Surface mount socket	14.95	13.50	12.00
P 0651 Under-dash socket	11.95	11.10	10.10

**Flush Mount Socket To Suit Engel Fridge**



Engel® 'Posi-Fit' style socket to suit Engel® fridges. Designed to fit P 0679-81, but can also be used standalone. 29mm mounting hole. Protective rubber cap. Thread length 19mm.

Price Each	RRP	4+	10+
P 0673	17.95	16.15	14.35

**Merit DC Panel Sockets**



Rated at 15A. Both fitted with 6.4mm spade connectors. P 0659 fitted with spring loaded plastic cap.

Price Each	RRP	10+	40+
P 0652 <span style="background-color: green; color: white; padding: 2px;">ROHS</span>	6.20	5.20	4.75
P 0659 Metal W/Flip Cover	9.95	8.95	8.25

**▼ USB Charging Sockets**

**4.2A Dual USB Charging Socket**

Connects directly to 12V with blue LED backlight. Designed to fit P 0679-81, but can also be used standalone. 2.1A DC max current per port. 29mm mounting hole. 19mm thread length.



Price Each	RRP	4+	10+
P 0667 4.2A	22.95	20.65	18.35

**QC3.0 4.2A Dual USB Charging Socket**

Offers QuickCharge 3.0 compatibility from both ports. Stylish blue aluminium finish with central LED volt meter. 29mm mounting hole. 30mm thread length.



Price Each	RRP	4+	10+
P 0695 3.6A	34.95	31.50	27.95

**3.1A Dual USB Charging Socket**

Connects directly to 12V. Designed to fit P 0679-81, but can also be used standalone. 3.1A DC max current (shared between the two USB ports). 29mm mounting hole. 19mm thread length.



Price Each	RRP	4+	10+
P 0677A 3.1A	15.95	14.40	12.80

**Panel Mount Dual USB Charging Socket**



Connects directly to your 12V DC in your car and outputs 5V DC 2.1A. May be used without mounting fascia if required. 65x42.5mm fascia. 29mm mounting hole. 1.2m fly lead connection with ring terminal for earth. Weatherproof cap.

Price Each	RRP	4+	RRP
P 0668 2.1A			18.00

**Switch Style 4.2A Dual USB Charger**

Connects directly to 12-24V with 6.3mm spade terminals. Fitted with rubber cap to prevent ingress. 4.2A DC max current (shared between ports). Voltage display flashes if battery level drops too low. Panel cutout 21.5 x 36.5



Price Each	RRP	4+	10+
P 0694 4.2A	34.95	31.50	27.95

**Switch Style 3.1A Dual USB Charger**

Connects directly to 12-24V with 6.3mm spade terminals. Fitted with rubber cap to prevent ingress. 3.1A DC max current (shared between ports). IP66 rated when fitted with cap. Panel cutout 21 x 38.5



Price Each	RRP	4+	10+
P 0690 3.1A	24.95	22.45	19.95

**▼ Panel Mount Meters**

**Panel Mount Volt Meter With Graph**

Measures 5-15V DC. Designed to fit P 0679-81, but can also be used standalone. 29mm mounting hole. 14mm thread length.



Price Each	RRP	4+	10+
P 0693	29.95	26.95	23.95

**Panel Mount Volt Meter**

Designed to fit P 0679-81, but can also be used standalone. 29mm mounting hole. Fitted with 120mm fly leads. Only 17.5mm deep.



Price Each	RRP	4+	10+
P 0672	14.95	13.50	12.00

**Panel Mount Volt & Ammeter**

Measures 6-30V DC @ 10A max with internal shunt. Designed to fit P 0679-81, but can also be used standalone. 29mm mounting hole. 19mm thread length.



Price Each	RRP	2+	4+
P 0671	35.95	32.50	28.95

**▼ Accessory Mounting Options**

**Switch Style Mounting Fascias**

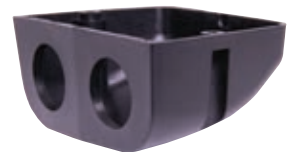


Compatible with P 0690, P 0694 USB chargers and S 1020 marine rocker switch (pg 338). Each modular section dove-tails together for as many as desired.

Price Each	RRP	6+	10+
P 0687 Single	1.95	1.75	1.55
P 0688 Modular Centre	1.95	1.75	1.55
P 0689 Modular Outer	1.95	1.75	1.55

**Dual Surface Mount Housing**

A surface mount enclosure suitable for mounting the threaded sockets on this page.



Price Each	RRP	4+	10+
P 0680 110W x 48H x 79Dmm	4.95	4.50	4.00

**Panel Mount Fascia Plates**



A flush panel mount fascia with three holes suitable for mounting the threaded sockets on this page.

Price Each	RRP	4+	10+
P 0679 Single 63Wx45Hmm	1.50	1.35	1.20
P 0681 Dual 105Wx43Hmm	2.95	2.70	2.40
P 0684 Triple 105Wx43Hmm	3.50	3.15	2.80