

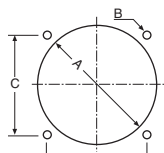
Panel Meters

Panel Meters



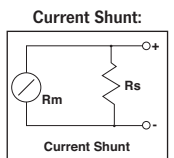
MU45

MU52E **ROHS**



Mounting Detail

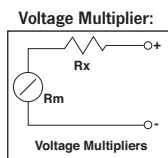
Style	A	B	C	D
MU45	45	4	37.5	37.5
MU52E	52	4	48	64



$$R_s = R_m \times \frac{A_m}{A_t - A_m} - R_m$$

Where...

- Am = FS current of meter
- At = FS current required
- Rm = Meter resistance
- Rs = Required shunt



$$R_x = \frac{V}{A} - R_m$$

Where...

- V = FSD voltage required
- A = FSD current of meter
- Rm = Meter resistance
- Rx = Required series resistor

FS Deflection	MU45	MU52E	Resistance
Dimensions (WxHxD)	58x52x24*	80x66x19*	
1mA	Q 0500A	-	210Ω
1A	Q 0508A	-	0.0582Ω
5A	Q 0510A	Q 0533	0.03Ω
10A	Q 0515A	-	0.012Ω
20A	Q 0521A	-	0.004Ω
20V	Q 0523A	-	20kΩ
30V	Q 0525A	Q 0535	30kΩ

\*Add 10mm depth to allow for connection terminals.

Price Each	RRP	2+	5+
MU45 models	20.25	18.25	16.25
MU52E models	25.25	23.95	21.25

Backlit VU Meter

Solder tag connections. Includes mounting parts.

SPECIFICATIONS

Backlight:	12V DC 50mA
Signal response:	0.8 seconds
Coil resistance:	650Ω
Mounting hole:	44 x 85mm
Max panel thickness:	10mm
Dimensions:	90.5W x 63.5H x 42Dmm



**ROHS**

Price Each	RRP	2+	5+
Q 0490	22.95	21.50	19.50

Waterproof IP65 LCD Thermometer Module

SPECIFICATIONS

Resolution	0.1°C
Range:	-30°C to +70°C
Accuracy:	< 40°C ±1.0°C, >40°C ±2.0°C
Sampling Rate:	10s
Indicators:	Over-range, Low battery
Battery:	Li-Ion Cell CR-2032
Dimensions:	68.8L x 34.2W x 24Hmm



**ROHS**

Price Each	RRP
Q 0576	15.00

LCD Thermometer Module

SPECIFICATIONS

Resolution	0.1°C
Range:	-10°C to +70°C
Accuracy:	< 40°C ±1.8°C, >40°C ±3.0°C
Sampling Rate:	10s
Indicators:	Over-range Hi or Lo
Battery:	LR44 (SR44) x 1
Dimensions:	48L x 28.6W x 15.5Hmm



**ROHS**

Price Each	RRP
Q 0574	12.00

Digital LED Panel Mount 0-100A Ammeter With Shunt

SPECIFICATIONS

Current range:	0-100A DC
Max input current:	±15mA
Power supply:	5V DC
Maximum count :	999 (3 digit)
Input impedance:	1kΩ
Sample frequency:	400ms
Dimensions:	50W x 26H x 23.5Dmm
Cutout size:	48 x 23mm



**ROHS**

Includes matched shunt allowing easy connection to measured power source.

Price Each	RRP	2+	5+
Q 0584	63.25	56.95	50.75

Digital LED Panel Mount 8-30V DC Volt Meter

SPECIFICATIONS

Voltage range:	8-30V DC
Maximum count :	999 (3 digit)
Power supply:	8-30V DC
Sample frequency:	400ms
Dimensions:	50W x 26H x 23.5Dmm
Cutout size:	48 x 23mm



**ROHS**

For applications requiring a professional finish and digital accuracy. Automatic zero calibration, polarity sensing and 8-30V DC powered design makes connection easy.

Price Each	RRP	2+	5+
Q 0585	28.75	25.75	22.75

Digital LED Panel Mount 200mV Volt Meter

SPECIFICATIONS

Voltage range:	±199.9mV DC
Maximum count :	999 (3 digit)
Power supply:	5V DC
Sample frequency:	400ms
Dimensions:	50W x 26H x 23.5Dmm
Cutout size:	48 x 23mm



**ROHS**

For applications requiring a professional finish and digital accuracy. Automatic zero calibration, polarity sensing and 5V DC powered design makes connection easy.

Price Each	RRP	2+	5+
Q 0588	33.95	30.75	27.25

100A 1mΩ Meter Shunt

SPECIFICATIONS

Dimensions:	81.5L x 20W x 18H
Tolerance:	0.5%
Voltage drop @ max current:	100mV
Resistance:	1mΩ



**ROHS**

Price Each	RRP	4+	10+
Q 0480	22.95	20.50	18.25

Important Note For Wholesale Customers

All prices listed in this catalogue are RRP "retail" prices. To access our competitive wholesale pricing scheme apply for an account via [www.altronics.com.au](http://www.altronics.com.au) or phone the wholesale division in your state - see back cover for phone numbers..

Looking for voltage monitoring meters?

Check out our Car, Caravan & 4WD section for a full range of DC power monitoring products for keeping tabs on battery and solar panel voltages. See page 256.

