

▼ Rocker Switches

Mini Rockers

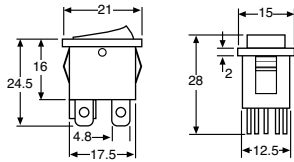


S 3210/12

S 3216

S 3217

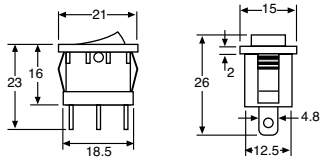
S 3218



Contact rating: 6A @ 250V AC
 Neon voltage: 240V AC
 Panel cutout: 19.2 x 13mm
 Panel thickness: 0.7-3mm
 Electrical life: 10,000 cycles
 Mechanical life: 15,000 cycles
 Contact resistance: <20mΩ
 Insulation resistance: >1000MΩ
 Dielectric strength: >1500V AC 1 minute
 >3000V AC between poles

Price Each		RRP	10+	40+
S 3210	SPST	2.25	2.10	1.85
S 3212	DPST	2.60	2.30	2.10
Illuminated				
S 3216	DPST Green neon illuminated	5.70	5.30	4.85
S 3217	DPST Red neon illuminated	5.70	5.30	4.85
S 3218	DPST Blue neon illuminated	5.70	5.30	4.85
S 3235	Waterproof membrane cover	1.40	1.25	1.15

Mini Rockers



Contact rating: 6A @ 250V AC
 Panel cutout: ≈19 x 13mm
 Panel thickness: 0.7-3mm
 Electrical life: 10,000 cycles
 Mechanical life: 30,000 cycles
 Contact resistance: <20mΩ
 Insulation resistance: >1000MΩ
 Dielectric strength: >1500V AC 1 minute
 >3000V AC between poles

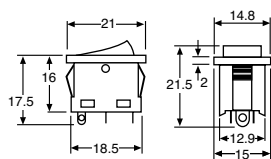
Price Each		RRP	10+	40+
S 3214	SPST Momentary On / Off	3.35	3.10	2.70
S 3215	SPDT On / Off	2.25	2.10	1.85
S 3235	Waterproof membrane cover	1.40	1.25	1.15

SPST LED Illuminated Mini Rocker



Suggested resistor for LED illumination, minimum 0.5W:

6V	220Ω
12V	560Ω
24V	1K2Ω



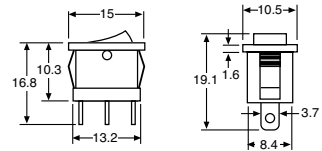
Contact rating: 6A @ 250V AC
 LED: Red, 1.8V DC
 Panel cutout: ≈19 x 13mm
 Panel thickness: 0.7-3mm
 Electrical life: 10,000 cycles
 Mechanical life: 30,000 cycles
 Contact resistance: <20mΩ
 Insulation resistance: >1000MΩ
 Dielectric strength: >1500V AC 1 minute
 >3000V AC between poles

Price Each		RRP	10+	40+
S 3220	SPST LED illuminated	3.35	3.10	2.70
S 3235	Waterproof membrane cover	1.40	1.25	1.15

Important Note For Wholesale Customers

All prices listed in this catalogue are RRP "retail" prices. To access our competitive wholesale pricing scheme apply for an account via www.altronics.com.au or phone the wholesale division in your state - see back cover for phone numbers.

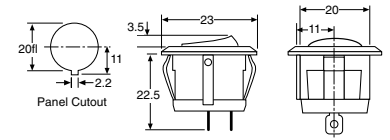
SPDT Miniature Rocker



Contact rating: 3A @ 240V AC
 Electrical life: 10,000 cycles
 Mechanical life: 30,000 cycles
 Panel cutout: 8.5 x 13.2 mm
 Panel thickness: 0.75 - 2mm
 Contact resistance: 20mΩ max.
 Insulation resistance: >1000MΩ
 Dielectric strength: >1500V AC 1 minute

Price Each		RRP	10+	40+
S 3201	SPDT	1.65	1.50	1.35

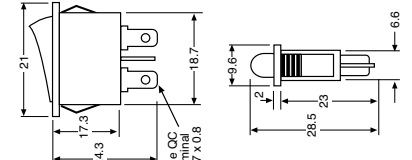
SPST Panel Mount Rocker



Contact rating: 6A @ 250V AC
 Panel thickness: 3mm max.
 Electrical life: 10,000 cycles
 Mechanical life: 100,000 cycles
 Contact resistance: 50mΩ max.
 Insulation resistance: >100MΩ
 Dielectric strength: 1500V AC

Price Each		RRP	10+	40+
S 3188	SPST	2.45	2.20	1.95

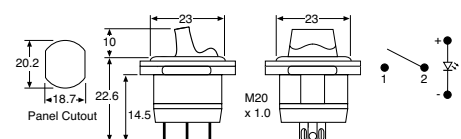
SPST Slimline Rocker



Contact rating: 6A @ 250V AC
 Panel cutout: ≈19.2 x 6.8 mm
 Panel thickness: 0.7-3mm
 Electrical life: 10,000 cycles
 Mechanical life: 30,000 cycles
 Contact resistance: <20mΩ
 Insulation resistance: >1000MΩ
 Dielectric strength: >1500V AC 1 minute

Price Each		RRP	10+	40+
S 3202	SPST	2.25	2.00	1.70
SA3202	SPST with 170mm flylead & 2 pin header plug	5.45	4.95	4.35

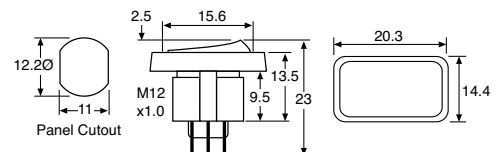
SPST LED Illuminated Rocker



LED: Red 1.85V DC, 10mA
 Contact rating: 10A @ 250V AC
 Panel thickness: 6mm max.
 Electrical life: 10,000 cycles
 Mechanical life: 100,000 cycles
 Contact resistance: 50mΩ max.
 Insulation resistance: >100MΩ
 Dielectric strength: >1500V AC 1 minute

Price Each		RRP	10+	25+
S 3192	SPST LED illuminated	5.70	5.10	4.75

DPDT Panel Mount Rocker



Contact rating: 3A @ 250V AC
 Panel cutout: 12.2mmØ
 Panel thickness: 6mm max.
 Electrical life: 10,000 cycles
 Mechanical life: 100,000 cycles
 Contact resistance: <50mΩ
 Insulation resistance: >100MΩ
 Dielectric strength: >1000V AC 1 minute

Price Each		RRP	10+	40+
S 3180	DPDT	3.40	3.10	2.75