

▼ Fuses

MEGA Type Fuses



Bolt on MEGA type fuses. High temperature plastic body. 32V DC max. 67.5 x 17mm.

| Price Each | RRP | 4+ | 10+ |
|-------------|-------|------|------|
| SM5865 80A | 10.50 | 9.15 | 8.00 |
| SM5867 125A | 10.50 | 9.15 | 8.00 |
| SM5869 175A | 10.50 | 9.15 | 8.00 |
| SM5872 250A | 10.50 | 9.15 | 8.00 |

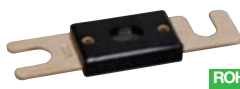
MIDI Type Fuses



Bolt on MIDI type fuses. High temperature plastic body. 32V DC max. 41 x 12mm.

| Price Each | RRP | 4+ | 10+ |
|-------------|------|------|------|
| SD5862 50A | 8.00 | 7.20 | 6.60 |
| SD5866 100A | 8.00 | 7.20 | 6.60 |
| SD5868 150A | 8.00 | 7.20 | 6.60 |
| SD5870 200A | 8.00 | 7.20 | 6.60 |

ANL Type Fuses



Bolt on ANL type fuses. High temperature plastic body. 32V DC max. 82 x 22mm.

| Price Each | RRP | 4+ | 10+ |
|-------------|------|------|------|
| S 5865 80A | 7.95 | 7.15 | 6.35 |
| S 5866 100A | 7.95 | 7.15 | 6.35 |
| S 5868 150A | 7.95 | 7.15 | 6.35 |
| S 5870 200A | 7.95 | 7.15 | 6.35 |

Resettable Blade Fuse Breakers

Automotive blade fuses, with the addition of a reset button for when load is exceeded. Max voltage 28V DC.



Due to added height, these fuse/breakers are not suitable for use in many covered fuse blocks.

| Price Each | RRP | 5+ | 20+ |
|-------------|------|------|------|
| S 5540 5A | 8.00 | 6.95 | 5.75 |
| S 5542 7.5A | 8.00 | 6.95 | 5.75 |
| S 5544 10A | 8.00 | 6.95 | 5.75 |
| S 5546 20A | 8.00 | 6.95 | 5.75 |

Automotive Blade Fuses

| Value | Colour | Part No. |
|-------|--------|----------|
| 3A | Purple | S 5899B |
| 4A | Pink | S 5898A |
| 5A | Orange | S 5900B |
| 7.5A | Brown | S 5902A |
| 10A | Red | S 5904B |
| 15A | Blue | S 5906B |
| 20A | Yellow | S 5908B |
| 25A | Clear | S 5910A |
| 30A | Green | S 5912A |
| 35A | Purple | S 5913A |
| 40A | Orange | S 5914B |



| Price Each | RRP | 10+ | 100+ |
|------------|------|------|------|
| ALL | 0.95 | 0.75 | 0.70 |

Automotive Mini Blade Fuses

| Value | Colour | Part No. |
|-------|--------|----------|
| 3A | Purple | S 5915 |
| 5A | Orange | S 5916 |
| 7.5A | Brown | S 5917 |
| 10A | Red | S 5918A |
| 15A | Blue | S 5919 |
| 20A | Yellow | S 5920A |
| 25A | Clear | S 5921 |
| 30A | Green | S 5922 |



| Price Each | RRP | 10+ | 100+ |
|------------|------|------|------|
| ALL | 0.90 | 0.75 | 0.70 |

Low Profile Mini Blade Fuses

| Value | Colour | Part No. |
|-------|--------|----------|
| 3A | Purple | S 5480 |
| 5A | Orange | S 5482 |
| 7.5A | Brown | S 5483 |
| 10A | Red | S 5484 |
| 15A | Blue | S 5485 |
| 20A | Yellow | S 5486 |
| 25A | Clear | S 5487 |
| 30A | Green | S 5488 |



| Price Each | RRP | 10+ | 100+ |
|------------|------|------|------|
| ALL | 1.15 | 1.05 | 1.00 |

Thermal Fuses

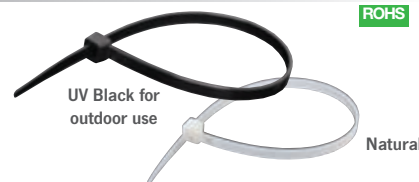
| Temperature | Part No. |
|-------------|----------|
| 77°C | S 5631 |
| 133°C | S 5632 |
| 157°C | S 5635 |
| 192°C | S 5636 |



| Price Each | RRP | 10+ | 25+ |
|------------|------|------|------|
| ALL | 3.60 | 3.30 | 2.90 |

▼ Cable Ties

Nylon Cable Ties



Industrial strength nylon ties. Dimensions in mm.
*Strength refers to tensile breaking point in kilograms.

| Price Pk | Qty | Length | Width | Strength | RRP | 4+ |
|----------------|------|--------|-------|----------|--------|--------|
| Natural | | | | | | |
| H 4012A | 100 | 100 | 2.5 | 8 | 4.55 | 3.95 |
| H 4014A | 1000 | 100 | 2.5 | 8 | 20.75 | 18.25 |
| H 4022A | 100 | 200 | 4.6 | 22 | 10.50 | 9.15 |
| H 4024A | 1000 | 200 | 4.6 | 22 | 75.95 | 62.25 |
| H 4027A | 25 | 432 | 4.6 | 22 | 11.50 | |
| H 4028A | 100 | 432 | 4.6 | 22 | 27.25 | 22.95 |
| H 4029A | 1000 | 432 | 4.6 | 22 | 169.00 | 159.00 |
| Black* | | | | | | |
| H 4031A | 100 | 100 | 2.5 | 8 | 4.55 | 3.95 |
| H 4032A | 1000 | 100 | 2.5 | 8 | 20.75 | 18.25 |
| H 4033A | 25 | 150 | 3.5 | 8 | 3.35 | |
| H 4034A | 100 | 150 | 3.5 | 8 | 6.55 | 5.90 |
| H 4035A | 1000 | 150 | 3.5 | 8 | 56.95 | 51.25 |
| H 4038A | 25 | 200 | 4.6 | 22 | 3.70 | |
| H 4039A | 100 | 200 | 4.6 | 22 | 10.50 | 9.15 |
| H 4040A | 1000 | 200 | 4.6 | 22 | 75.95 | 62.25 |
| H 4061A | 25 | 280 | 4.6 | 22 | 6.00 | |
| H 4062A | 100 | 280 | 4.6 | 22 | 14.75 | 13.50 |
| H 4063A | 1000 | 280 | 4.6 | 22 | 135.00 | 120.00 |
| H 4064 | 25 | 430 | 4.6 | 22 | 11.50 | |
| H 4065 | 100 | 430 | 4.6 | 22 | 27.25 | 22.95 |
| H 4066 | 1000 | 430 | 4.6 | 22 | 195.00 | 185.00 |
| H 4068 | 100 | 120 | 4.6 | 22 | 6.95 | 6.15 |
| H 4069 | 1000 | 120 | 4.6 | 22 | 49.95 | 40.95 |
| H 4070 | 100 | 370 | 7.2 | 55 | 45.95 | 41.50 |
| H 4080 | 100 | 400 | 9 | 80 | 39.25 | 35.25 |
| H 4083 | 100 | 550 | 9 | 80 | 40.25 | 36.25 |

Cable Ties With Marker



| Price Per Pk | Qty | Length | Width | Strength | RRP | 5+ |
|--------------|------|--------|-------|----------|-------|-------|
| H 4042A | 25 | 100 | 2.5 | 8 | 3.85 | 3.10 |
| H 4043A | 100 | 100 | 2.5 | 8 | 6.60 | 5.30 |
| H 4044A | 1000 | 100 | 2.5 | 8 | 59.50 | 47.75 |

Fixable Cable Ties



4mm hole mounting hole. Nylon 66, UL94V-2.

| Price Pk | Qty | Length | Width | Strength | RRP | 5+ |
|----------|------|--------|-------|----------|-------|-------|
| H 4004A | 25 | 150 | 3.7 | 18 | 6.95 | 6.50 |
| H 4005A | 100 | 150 | 3.7 | 18 | 14.95 | 13.50 |
| H 4006A | 1000 | 150 | 3.7 | 18 | 69.95 | 59.95 |

Stainless Steel (316) Cable Ties



Commercial grade. Commonly used steel ties for securing conduits, pipes, signs etc. Ball locking mechanism type - non-removable. 4.6mm tensile strength 61kg. 7.9mm tensile strength 81kg.

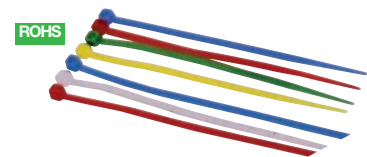
Standard

| Price Per Pk | Qty | Length | Width | RRP | 4+ |
|--------------|-----|--------|-------|-------|-------|
| H 4161 | 25 | 200 | 4.6 | 12.50 | 11.25 |
| H 4160 | 100 | 200 | 4.6 | 34.50 | 30.95 |
| H 4164 | 25 | 350 | 4.6 | 15.95 | 14.50 |
| H 4163 | 100 | 350 | 4.6 | 45.95 | 41.50 |
| H 4167 | 25 | 550 | 4.6 | 18.50 | 16.75 |
| H 4166 | 100 | 550 | 4.6 | 54.95 | 49.50 |
| H 4171 | 25 | 200 | 7.9 | 16.75 | 14.95 |
| H 4170 | 100 | 200 | 7.9 | 51.75 | 46.75 |
| H 4174 | 25 | 350 | 7.9 | 22.95 | 20.75 |
| H 4173 | 100 | 350 | 7.9 | 74.75 | 67.50 |
| H 4177 | 25 | 550 | 7.9 | 28.50 | 25.75 |
| H 4176 | 100 | 550 | 7.9 | 85.95 | 77.50 |

Nylon Coated

| Price Per Pk | Qty | Length | Width | RRP | 4+ |
|--------------|-----|--------|-------|-------|-------|
| H 4182 | 25 | 350 | 4.6 | 16.95 | 15.50 |
| H 4183 | 100 | 350 | 4.6 | 49.95 | 45.00 |
| H 4188 | 25 | 350 | 7.9 | 23.95 | 21.75 |
| H 4189 | 100 | 350 | 7.9 | 75.00 | 67.50 |

300 Mixed Cable Ties



Mixed cable tie pack containing 200pcs of 100mm - 100 Natural, 25ea x Red, Yellow, Blue, Green. Plus 100pcs of 200mm cable ties - 50 Natural, 25 ea x Red, Blue.

| Price Each | RRP | 2+ | 4+ |
|------------|-------|-------|-------|
| H 3980A | 11.50 | 10.95 | 10.50 |