

▼ USB Charging Sockets

Panel Mount Dual USB Charging Socket



Connects directly to 12V to provide USB charging from your dash or connection panel. 65 x 42.5mm mounting facia included (can be used without facia if required). 29mm mounting hole. USB 2.1A Total output. 1200mm Flyleads.

Price Each	RRP	2+	4+
P 0668A 2.1A	28.75	25.95	22.95

Panel Mount Dual USB Charging Socket



Connects directly to your 12V DC in your car and outputs 5V DC 2.1A. May be used without mounting facia if required. 65x42.5mm facia. 29mm mounting hole. 1.2m fly lead connection with ring terminal for earth. Weatherproof cap.

Price Each	RRP	2+	4+
P 0668 2.1A			18.00

3.1A Dual USB Charging Socket

Connects directly to 12V. Designed to fit P 0679-84, mounting panels but can also be used standalone. 3.1A DC max current (shared between the two USB ports). 29mm mounting hole. 19mm thread length.



Price Each	RRP	4+	10+
P 0677A 3.1A	18.50	16.75	14.75

Switch Style 4.2A Dual USB Charger

Connects directly to 12-24V with 6.3mm spade terminals. Fitted with rubber cap to prevent ingress. 4.2A DC max current (shared between ports). Voltage display flashes if battery level drops too low. Panel cutout 21.5 x 38.5



Price Each	RRP	4+	10+
P 0694 4.2A	40.25	36.25	32.25

Switch Style 3.1A Dual USB Charger

Connects directly to 12-24V with 6.3mm spade terminals. Fitted with rubber cap to prevent ingress. 3.1A DC max current (shared between ports). IP66 rated when fitted with cap. Panel cutout 21 x 38.5



Price Each	RRP	4+	10+
P 0690A 3.1A	24.95	22.45	19.95
P 0691 3.1A QC 3.0	29.95	26.95	23.95

▼ Vehicle Switches

DPST Contura Style Rocker Switch



IP66 rated marine switch panel style switch with illuminated indicator. 20A/12V DC, 10A/24V DC. 6.3mm spade connection. Alternate action. Cutout 21 x 38.5mm.

Price Each	RRP	10+	40+
S 1020 Red	10.95	10.50	9.75
S 1022 Blue	10.95	10.50	9.75
S 1023 White	10.95	10.50	9.75

3 Way Switch Panel With Breakers



Features 3 x 20A 12V DC rated switches with red illuminated with individual 15A DC breakers. 114W x 96H x 60Dmm.

Price Each	RRP	2+	4+
S 2750	59.95	53.95	47.95

▼ Accessory Mounting Options

Switch Style Mounting Fascias



Compatible with P 0690A, P 0691, P 0694 USB chargers and S 1020 marine rocker switch. Dove-tails together for as many as desired.

Price Each	RRP	6+	10+
P 0687 Single	2.25	2.00	1.80
P 0688 Modular Outer	2.25	2.00	1.80
P 0689 Modular Centre	2.25	2.00	1.80

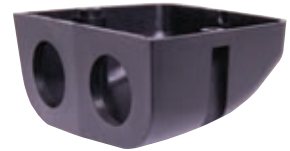
Panel Mount Fascia Plates



A flush panel mount fascia with three holes suitable for mounting the threaded sockets on this page.

Price Each	RRP	4+	10+
P 0679 Single 63Wx45Hmm	1.70	1.55	1.40
P 0681 Dual 105Wx43Hmm	3.40	3.10	2.75
P 0684 Triple 105Wx43Hmm	4.00	3.60	3.25

Dual Surface Mount Housing



A surface mount enclosure suitable for mounting to accessory sockets with 29mm mounting hole.

Price Each	RRP	4+	10+
P 0680 110W x 48H x 79Dmm	5.70	5.20	4.60

▼ Terminals & Power Posts

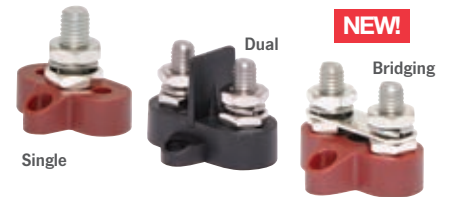
Gold Plated Battery Terminal Pair



Gold plated positive and negative marked battery terminals. With M8 wing nut connection and terminal opening to suit T1 standard DIN battery posts.

Price Per Pair	RRP	4+	8+
H 1780	18.50	16.50	14.75

Power Distribution Posts



Allows for terminating of heavy duty power cables for one or more connections. Red or black base allows for colour coding for wiring. Glass fibre reinforced sealed nylon base. Stainless steel hardware.

Price Each	RRP	6+	10+
Single Post			
P 2172 M8 Red	10.95	10.25	8.90
P 2173 M8 Black	10.95	10.25	8.90
P 2182 M10 Red	10.95	10.25	8.90
P 2183 M10 Black	10.95	10.25	8.90
Dual Post			
P 2175 M8 Red	12.95	11.65	10.45
P 2176 M8 Black	14.95	13.50	11.95
P 2177 M10 Red	14.95	13.50	11.95
P 2179 M10 Black	14.95	13.50	11.95
Dual Bridging			
P 2180 M8 Red	13.75	12.50	10.95
P 2181 M8 Black	13.75	12.50	10.95

Battery Terminal Covers



Made from flexible PVC these covers protect and insulate battery terminals on SLA and automotive batteries. Size refers to terminal end opening.

Price Each	Cable Entry	RRP	4+	10+
S 5138 13mm Red	8	2.90	2.60	2.30
S 5139 13mm Black	8	2.90	2.60	2.30
S 5140 20mm Red	12	3.40	3.10	2.75
S 5141 20mm Black	12	3.40	3.10	2.75
S 5142 42mm Red	15	4.55	4.15	3.70
S 5143 42mm Black	15	4.55	4.15	3.70