

▼ Arduino Development Boards

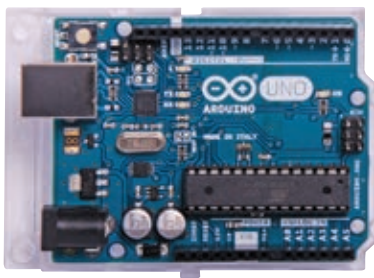
**Arduino® Uno R3 Starter Kit**



The official Arduino starter kit which includes a UNO R3 board with a getting started project book & a collection of project components (resistors, LEDs, servo motor, LCD screen, capacitors and more!). 15 projects to build and when you're done you'll be ready to design your own Arduino projects! Great for electronics education.

Price Each	RRP	6+
<b>Z 6289</b>	<b>250.00</b>	<b>225.00</b>

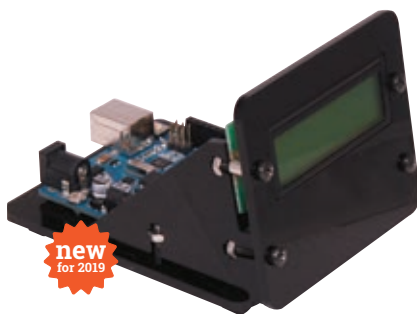
**Arduino® Uno R3 Dev Board**



A microcontroller board based on the ATmega328. It has 14 digital input/output pins (of which 6 can be used as PWM outputs), 6 analog inputs, a 16MHz crystal oscillator, a USB connection, a power jack, an ICSP header, and a reset button. It contains everything needed to support the microcontroller; simply connect it to a computer with a USB cable. Also available in a generic clone version.

Price Each	RRP	6+
<b>Z 6280</b> Official Board	<b>58.95</b>	<b>52.15</b>
<b>Z 6240</b> Funduino® UNO Clone	<b>29.95</b>	<b>26.95</b>

**Inventa® Acrylic MegaStand For Arduino**



A cut down MegaBox (see page 216) which provides a backlit 16x2 LCD for simple readouts, plus room to customise the front panel with buttons or IR sensor. UNO (sold separately) fits neatly behind the screen and provides room for add-on shields as required.

Price Each	RRP	4+
<b>K 9675</b>	<b>24.95</b>	<b>23.50</b>

**Arduino® Mega 2560 R3 Dev Board**



The Arduino Mega 2560 is a microcontroller board based on the ATmega2560. It has 54 digital input/output pins (of which 14 can be used as PWM outputs), 16 analog inputs, 4 UARTs (hardware serial ports), a 16 MHz crystal oscillator, a USB connection, a power jack, an ICSP header, and a reset button. It contains everything needed to support the microcontroller; simply connect it to a computer with a USB cable. Compatible with most Arduino shields. Also available in a generic clone version.

Price Each	RRP	6+
<b>Z 6281</b> Official Board	<b>104.95</b>	<b>94.50</b>
<b>Z 6241</b> Funduino® Mega Clone	<b>49.95</b>	<b>45.00</b>

**Arduino® Due Development Board**



The Arduino Due is a microcontroller board based on the Atmel SAM3X8E ARM Cortex-M3 CPU. It is the first Arduino board based on a 32-bit ARM core microcontroller. It has 54 digital input/output pins (of which 12 can be used as PWM outputs), 12 analog inputs, 4 UARTs (hardware serial ports), a 84 MHz clock, an USB OTG capable connection, 2 DAC (digital to analog), 2 TWI, a power jack, an SPI header, a JTAG header, a reset button and an erase button. The board contains everything needed to support the microcontroller; simply connect it to a computer with a micro-USB cable. The Due is compatible with all 3.3V Arduino shields.

Price Each	RRP	6+
<b>Z 6284</b>	<b>116.50</b>	<b>104.95</b>

**Pro Mini 328**

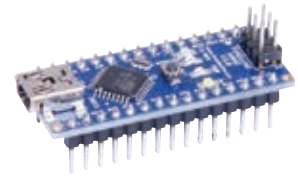


Measuring a tiny (0.8mm) thick the Arduino Pro Mini comes unpopulated enabling you to solder in any connector or wire with any orientation you need. Ideal for experienced Arduino users or building into a compact embedded design. This board connects directly to the FTDI breakout board and supports auto-reset.

- Features** • Voltage regulated • Max 150mA output  
 • Over current protected • Reverse polarity protected  
 • Analog Pins: 8 • Digital I/Os: 14

Price Each	RRP
<b>Z 6222A</b> 5V 16MHz Funduino Clone Board	<b>14.95</b>

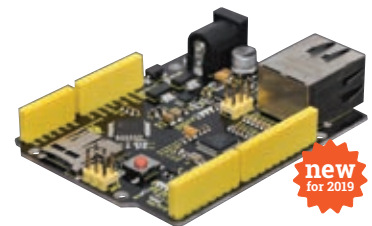
**Funduino Nano 3.0 Board**



An Arduino compatible nano board featuring the ATmega328p chip. A compact, breadboard friendly version of the Arduino UNO. USB mini B connection for power and serial. 5V DC input. Small size makes it perfect for embedding into your projects. Size: 46L x 18W x 18Hmm.

Price Each	RRP	2+	4+
<b>Z 6372</b>	<b>29.95</b>	<b>26.95</b>	<b>23.95</b>

**W5500 Ethernet Development Board**



Connect your Arduino design to the internet-of-things with this handy W5500 ethernet development board with atmega328p on board. Fully compatible with UNO with integrated USB download & micro SD card slot. Uses standard libraries. Fully shield compatible with UNO. 5V input.

Price Each	RRP	2+	4+
<b>Z 6467</b>	<b>59.95</b>	<b>53.95</b>	<b>47.95</b>

**Lilypad Style ATmega32U4 Module**



The 'lilypad' form factor allows easy building of sewable electronics and e-textile projects. Can be used with Z 6368 LED sequins (pg 211). The AT-Mega 32U4 is an 8-bit AVR microcontroller featuring 32KB self-programming flash program memory and a 12-channel 10-bit A/D-converter. On board micro USB for 5V power with JST for connection to lithium battery (charging switch provided). 50mmØ.

Price Each	RRP	2+	4+
<b>Z 6346</b>	<b>24.95</b>	<b>22.45</b>	<b>19.95</b>

**Lilypad Style ATmega328 Module**



The 'lilypad' form factor allows easy building of sewable electronics and e-textile projects. Can be used with Z 6368 LED sequins (pg 211). It has 14 digital input/output pins (of which 6 can be used as PWM outputs) and 6 analog inputs. 50mmØ.

Price Each	RRP	2+	4+
<b>Z 6349</b>	<b>16.35</b>	<b>14.75</b>	<b>13.10</b>