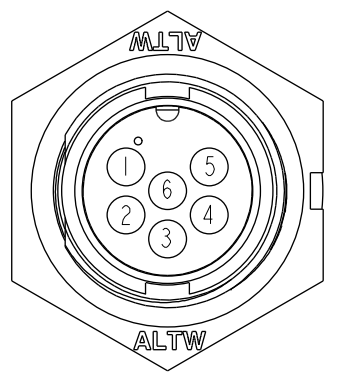
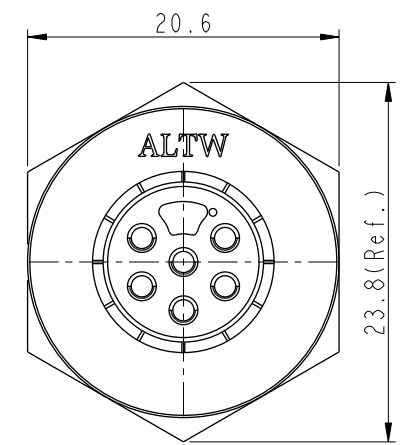
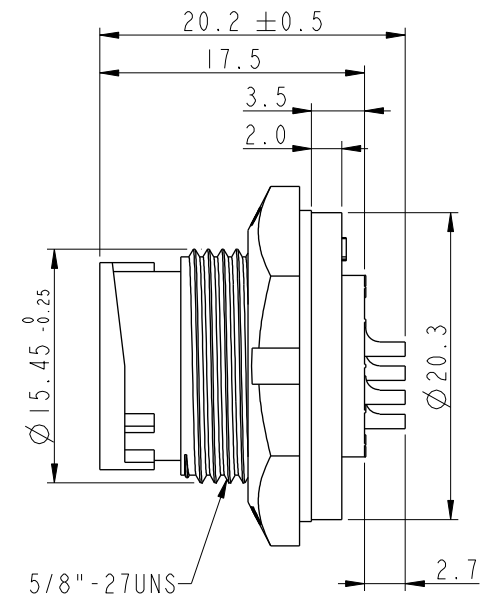
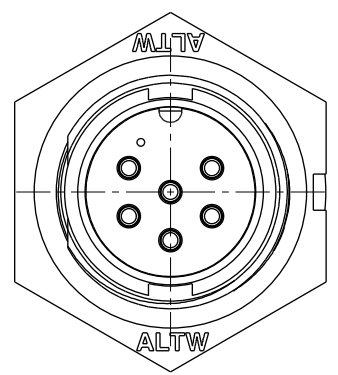


THIS DOCUMENT IS SUBJECT TO CHANGE WITHOUT NOTICE. IT IS CONFIDENTIAL AND A PROPERTY OF Amphenol LTW. DISCLOSURE TO THIRD PARTY HAS TO BE AUTHORIZED BY Amphenol LTW.

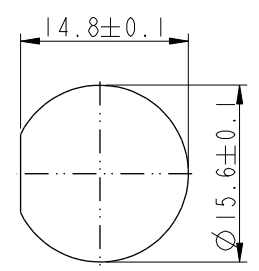
REV.	ECN NO.	DATE	SIGN	DESCRIPTION
A	Initial Release	2013/11/11	Ann	New Item

ALTW
 CONFIDENTIAL
 2013-11-11
 R&D DEPT.

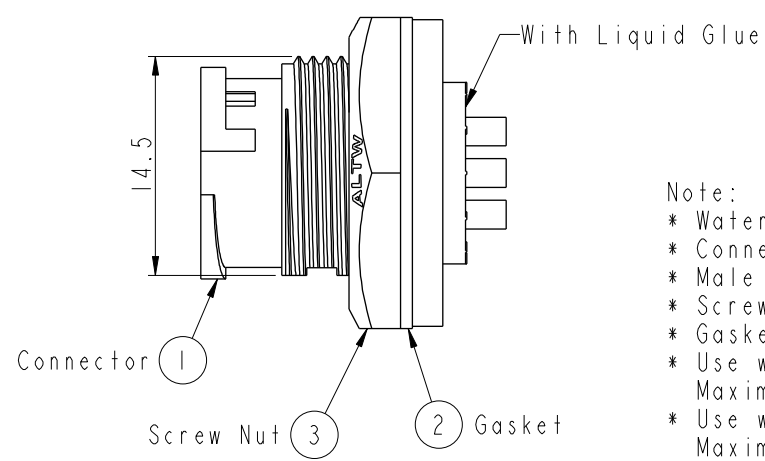
ALTW
 DCC. DEPT.
 CONFIDENTIAL
 2013.11.20
 ISSUED



Pin Assignments
Front View



Recommended Panel
Cut-Out



- Note:
- * Waterproof Rate: IP67
 - * Connector: Nylon+GF, Black
 - * Male Pin: Copper Alloy, Gold Plated.
 - * Screw Nut: Nylon+GF, Black
 - * Gasket: Silicone, Gray
 - * Use with waterproof cap or dust cap
Maximum Panel Thickness: 2.8mm
 - * Use without waterproof cap or dust cap
Maximum Panel Thickness: 4.0mm

UNIT:mm TOLERANCE .X ±0.25 .XX ±0.1 .XXX ±0.05 ANGLES ±1°	TITLE Standard CNC Pin Panel Lock 6Pin M Conn M Pin			Amphenol LTW 安費諾亮泰企業股份有限公司		ITEM NO IBD-06PMMS-LC7001	DRAWN BY Ann-Lee	DATE 2013/11/11
	SCALE 2:1	SIZE A4	SHEET 1 OF 1			DWG NO IBD-06PMMS-LC7001	CHECKED BY Ruru	DATE 2013/11/11
	REV. A	WC-REV. A.2	QC: Inspection item	CUSTOMER ALTW	APPROVED BY Victor	DATE 2013/11/11		