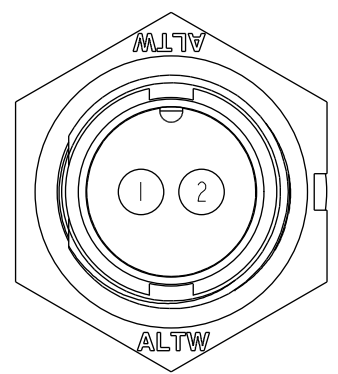
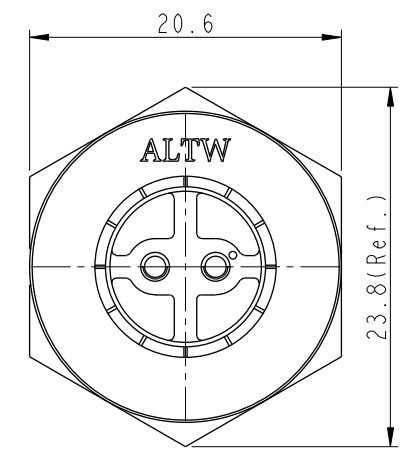
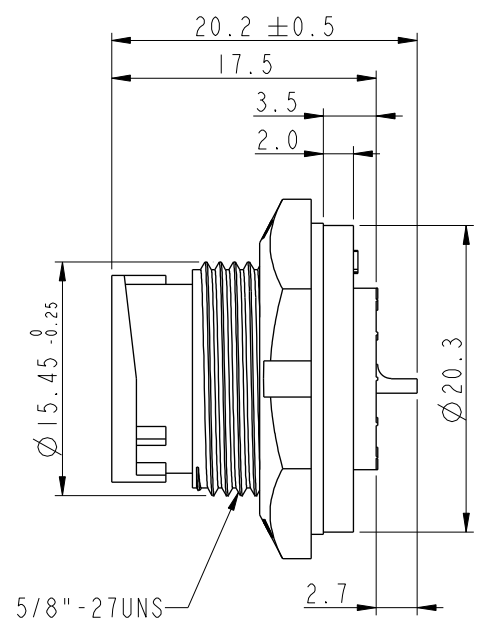
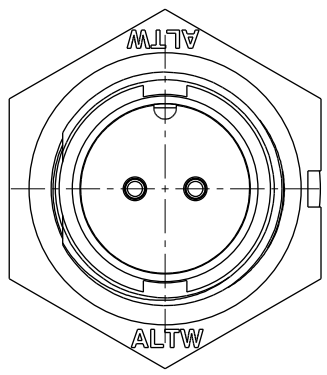


THIS DOCUMENT IS SUBJECT TO CHANGE WITHOUT NOTICE. IT IS CONFIDENTIAL AND A PROPERTY OF Amphenol LTW. DISCLOSURE TO THIRD PARTY HAS TO BE AUTHORIZED BY Amphenol LTW.

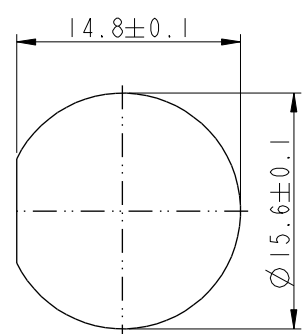
REV.	ECN NO.	DATE	SIGN	DESCRIPTION
A	Initial Release	2013/10/29	Ann	New Item

**ALTW**  
 CONFIDENTIAL  
 2013-10-29  
 R&D DEPT.

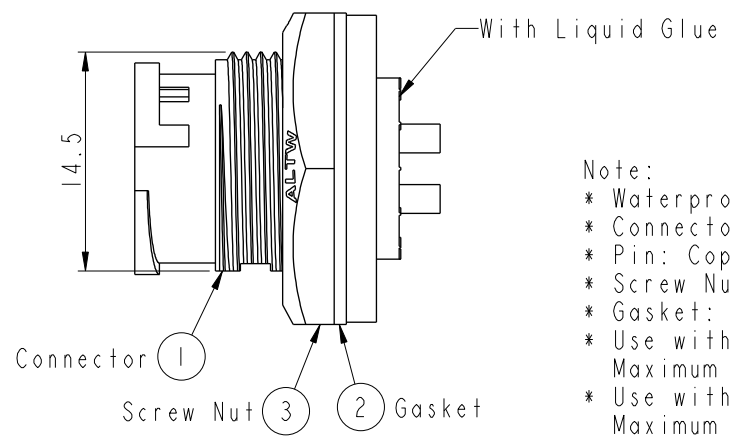
**ALTW**  
 DCC. DEPT.  
 CONFIDENTIAL  
 2013.11.20  
 ISSUED



Pin Assignments  
Front View



Recommended Panel  
Cut-Out



- Note:
- \* Waterproof Rate: IP67
  - \* Connector: Nylon+GF, Black
  - \* Pin: Copper Alloy, Gold Plated
  - \* Screw Nut: Nylon+GF, Black
  - \* Gasket: Silicone, Gray
  - \* Use with waterproof cap or dust cap  
Maximum Panel Thickness: 2.8mm
  - \* Use without waterproof cap or dust cap  
Maximum Panel Thickness: 4.0mm

<b>UNIT:mm</b> TOLERANCE .X ±0.25 .XX ±0.1 .XXX ±0.05 ANGLES ±1°	TITLE Standard CNC Pin Panel Lock 2Pin M Conn M Pin		<h1 style="text-align: center;">Amphenol LTW</h1> <p style="text-align: center;">安費諾亮泰企業股份有限公司</p>		ITEM NO IBD-02PMMS-LC7001	DRAWN BY Ann-Lee	DATE 2013/10/29	
	SCALE 2:1	SIZE A4			SHEET 1 OF 1	DWG NO IBD-02PMMS-LC7001	CHECKED BY Ruru	DATE 2013/10/29
	REV. A	WC-REV. A.3			QC: Inspection item	CUSTOMER ALTW	APPROVED BY Victor	DATE 2013/10/29