

REV.	SPECIFICATION	ECN NO.	APPD.

**Material:**

Housing: Thermoplastic Polyester Glass Filled UL94V-0.

Contacts: Copper Alloy.

Cable: 1.27mm(0.050") pitch flat cable.

**Electrical Characteristics:**

Current Rating: 1 AMP.

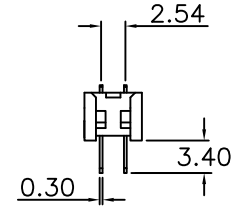
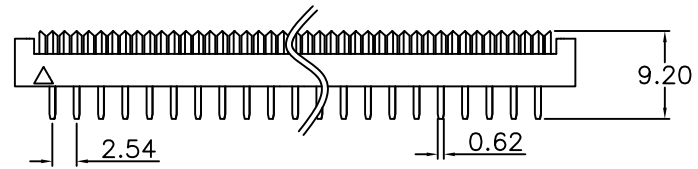
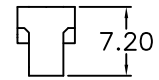
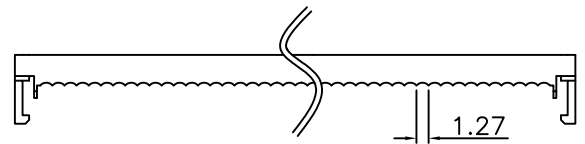
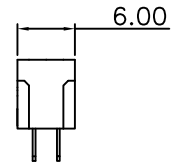
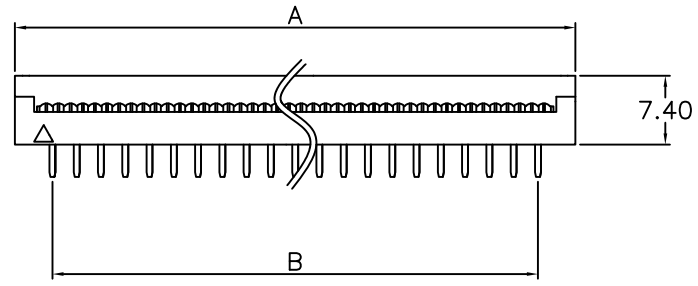
Dielectric Withstanding Voltage: AC 500V

Insulator Resistance: 1000MΩ min.

Contact Resistance: 30mΩ max.

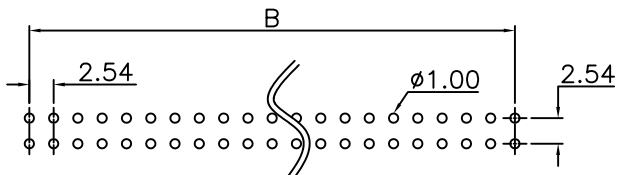
Operating Temperature: -40°C~+105°C.

**\*RoHS Compliant**



Position	Dimension		Position	Dimension	
	A	B		A	B
06	12.94	5.08	26	38.40	30.48
08	15.48	7.62	28	40.60	33.02
10	18.10	10.16	30	43.50	35.56
12	20.51	12.70	34	48.58	40.64
14	23.05	15.24	40	56.20	48.26
16	25.64	17.78	50	69.00	60.69
18	28.15	20.32	60	81.75	73.66
20	30.78	22.86	64	86.83	78.74
24	35.86	27.94			

6011-C Series    xx No. of Pin Per Row    C: Selective Gold Plated    G: Gold Plated    T: Tin Plated    00: G/F    B: Black    Y: Grey    A: Tray Package



P.C. Board Layout

<b>Tolerances</b>	<b>Dwg. No.</b>	6011D01007	<b>Title:</b>	6011 Series Transition Plug 2.54mmX2.54mm(0.100X0.100")
X = ±0.50	<b>Projection</b>		<b>SHEET</b>	1/1
.X = ±0.30	<b>Unit</b>	mm	<b>Ver.No.</b>	A1
.XX = ±0.20	<b>Scale</b>	1:1	<b>Drawn By</b>	Vic Lyu02/03'15

**OUPIIN**  
**OUPIIN ELECTRONIC(KUNSHAN) CO., LTD.**  
**P/N: 6011-CxxC00BA**