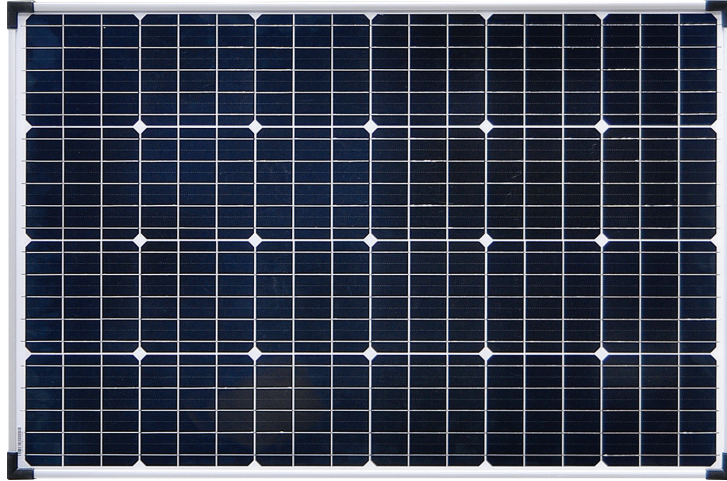
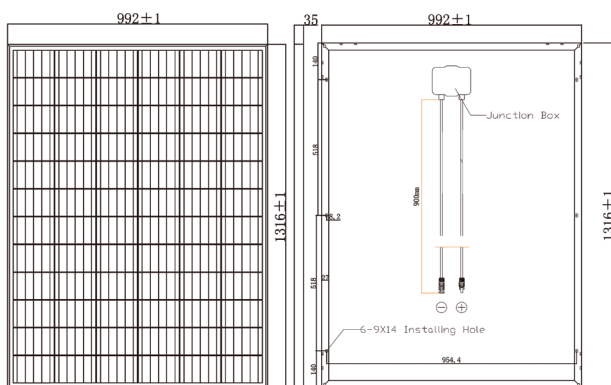


225W 24V Monocrystalline Solar Panel | N 0225F



This quality 225W 24V monocrystalline solar panel module is designed for direct connection to a solar charge controller for use in remote power systems. This model is suitable for use in 24V battery systems or grid connected systems, large commercial solar installations etc. It is constructed with an extruded aluminium framing and tempered dust resistant glass panel for installation in the most demanding of Australian conditions. Backed by a 25 year output warranty and a 5 year manufacturer defect warranty these panels are manufactured to a high standard by one of the worlds leading suppliers since 1992.

Typical applications: - 24V battery systems - Grid connect solar power systems - Commercial rooftop PV systems - Off-grid house remote power.



Specifications:

Maximum power at STC (Pmax):	225W
Nominal voltage:	24V
Short circuit current (Isc):	6.44A
Open circuit voltage (Voc):	43.2V
Maximum power current (Imp):	6.25A
Maximum power voltage (Vmp):	36V
Connection:	900m Dual MC-4 Plug Lead
Dimensions:	992 x 1316 x 25 mm
Operating temperature:	-40° to +85°C