

User's Guide

*Printing in Taiwan
Ver :021210*

Preface

About this manual

This manual is designed to make using the RemoComm software as easy as possible. Information in this document has been carefully checked for accuracy; however, no guarantee is given to the correctness of the contents. The information in this document is subject to change without notice.

Copyright

© Copyright 2002

This document contains proprietary information protected by copyright. All rights are reserved. No part of this manual may be reproduced by any mechanical, electronic or other means, in any form, without prior written permission of the manufacturer.

Trademarks

All trademarks and registered trademarks are the property of their respective owners.

Introducing RemoComm

RemoComm software provides a convenient interface for configuring menus for the SRC-3810 Universal Remote Control. The software enables users to customize the SRC-3810 remote control menus, create macros and timers, and import the new settings to the remote control via the interface cable. Users are also able to import settings from the remote control and duplicate remote control data for backing up on a PC.

System Requirements

- PC with an USB port and CD-ROM drive
- Minimum 30MB free hard-disk space

OS

Windows 98 (Including Second Edition)
Windows Millennium Edition
Windows 2000 Professional
Windows XP Home Edition
Windows XP Professional Edition

Microsoft® and Windows are either registered trademarks or trademarks of Microsoft Corporation in the United States and/or other countries.

How to Install RemoComm

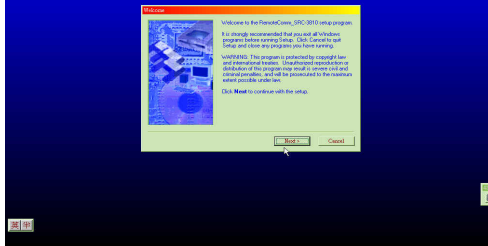
- If you are using Windows 2000 or Windows XP, log on as an administrator.
- Shut down all the programs, and disable anti-virus protection.

1. Start your computer and then insert the CD-ROM into your CD-ROM drive.

The setup program will start automatically. If you want to start the setup program manually, double-click the "My Computer" icon on your Windows desktop, double click the icon for your CD-ROM drive, and double-click "RemoComm.exe".

Click **Next** and follow the instructions on the screen to install the RemoComm program.

RemoteComm_SRC-3810 1.03

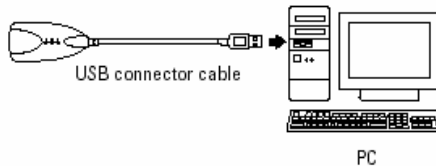


2. Follow the on screen instructions.

If you want the software to be installed in a particular location on your hard drive, click "Browse" to select a new location. If you are satisfied with the default location, click "Next" to continue.

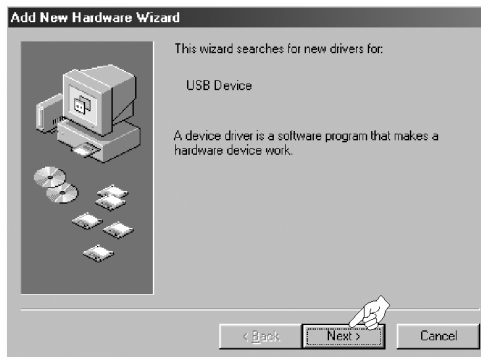
How to install the Driver

1. Connect the supplied USB connector cable to the USB port of our PC.



"Add New Hardware Wizard" will appear on the screen.

2. Click "Next".



3. Select "Display a list of all the drivers in a specific location, so you can select the driver you want", and click "Next".



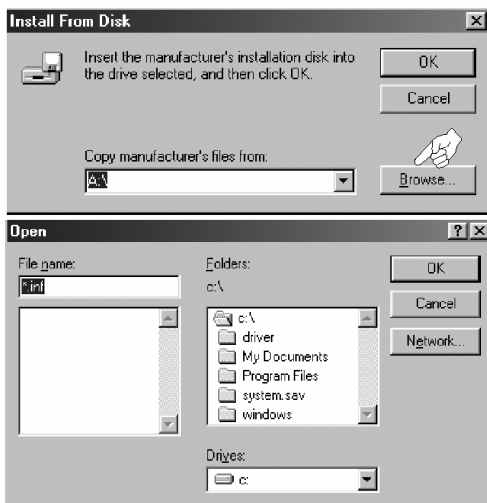
4. Select "Ports [COM&LPT]" and click "Next".



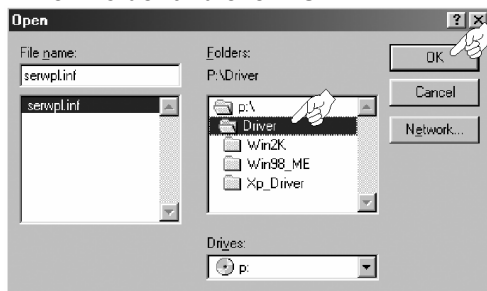
5. Click "Have Disc".



6. Click "Browse" and select the drive in which the CD-ROM is set.



7. Select "Driver" folder and click "OK".

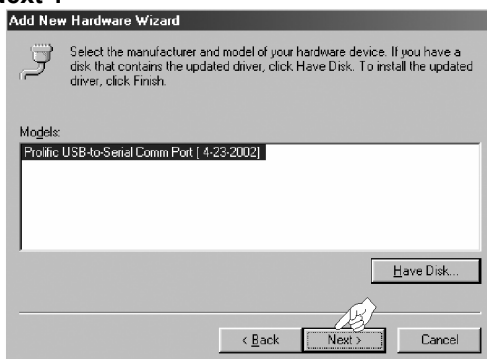


8. Click "OK".



The driver's name, "Prolific USB-to Serial Com Port", appears on the list.

9. Click "Next".



10. Click "Next" to install the driver.



Device Manager

You can use the Device Manager to check if the driver is installed properly.

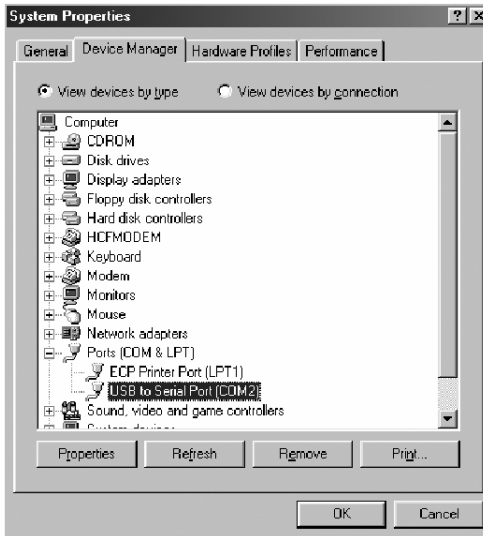
To display the Device Manager of Windows 98 or Windows Me

Go to Start - Settings - Control Panel to open the Control Panel window. Double-click the System icon, and click the Device Manager tab. (Or right-click the My Computer icon and select Properties. Then click the Device Manager tab of the System Properties window.)

To display the Device Manager of Windows XP or Windows 2000

Go to Start - Control Panel to open the Control Panel window. Double-click the System icon, click the Hardware tab, and then click the Device Manager button.

Categories of devices installed on the system will be listed. Click "+" beside the category "Ports [COM & LPT]".



When the driver is installed properly, "USB to Serial Port" will appear on the Device Manager.

Should the device has a conflict, "!" will be shown with the device's name. In such a case, delete the device, restart the system, and reinstall the driver again.





How to Start the Program

Access the folder where you installed the software, and double-click RemoComm.exe to start the program.

- You will be able to access the file by selecting "Start - Program - RemoComm - RemoComm.exe".

Managing Files


The file management toolbar provides users with quick access to file management functions:

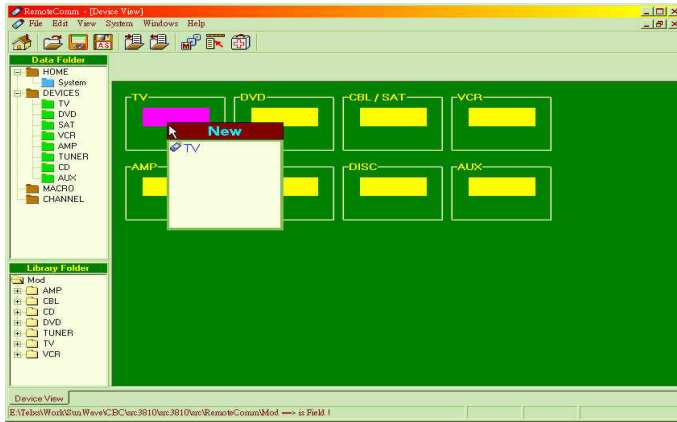
	Home : Return to Home page
	Open : Opens a smcf file Smcf: manufacture Configure file
	Save : Saves a smcf file
	Save as : Saves a smcf file to a different filename

Note: File management functions are also available from the menu bar.

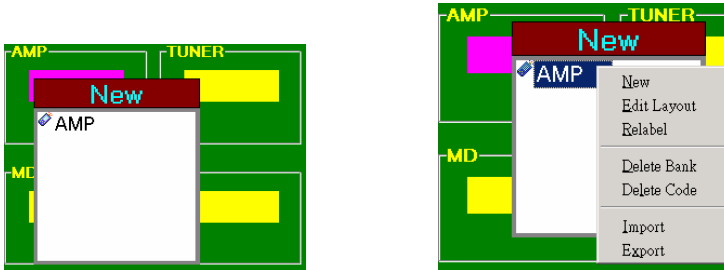
Configure the Devices Menu

RemoComm software enables you to configure the SRC-3810 remote control menu to individual preferences.

Click  to load a *.smcf file. The configure file elements are shown in the center pane of the RemoComm window:



When point at TV, DVD, CBL/SAT, VCR, AMP, AUDIO, DISC, AUX in the Device Screen, all devices will be shown under the corresponding key, then you press right button to execute **New, Key Layout, Rename, Delete Device, Delete Code, Import, Export**

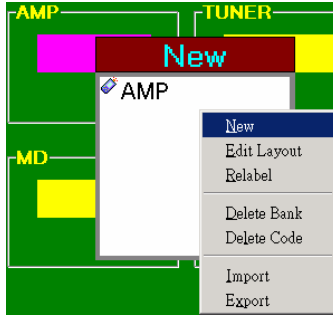


The following sections describe the configuration buttons:

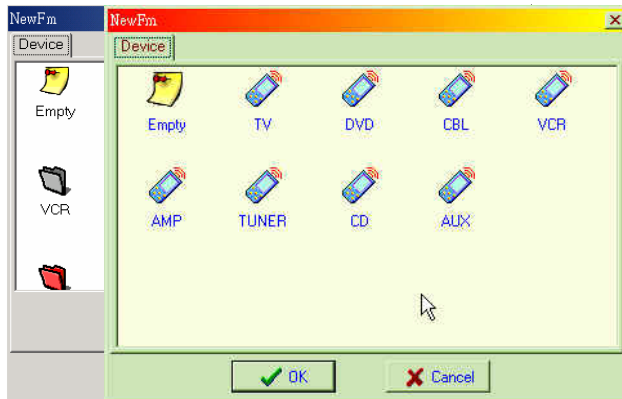
Creating New Device

Use **NEW** to create a new device: (maximum can set 16 Device)

1. Point at new created device , press right button and click **NEW**



2. Input the name of new create device and click **OK**
3. Select the attribute of new device and click **OK**






After creating a new device, if you want to create another new device, please repeat the steps 1-3

Re-layout key label

Use **Relayout** to modify device key layout

1. Point at the Device which you want to Relayout ,press right button and Click **Relayout**
2. Open Relayout dialogue box

3.  : Edit key layout

4.  : Delete Key
5.  : Delete Key Code
6. Show All / Show real :
Show All : Show all the symbols of key
Show Real ; Show real keys
7. Finish Relayout › Click **OK**

Rename Device name

Select Device and rename directly or use **Rename** to modify Device name

1. Point at the device which you want to Rename, press right button and click **Rename**
2. Input device new name
3. Press Enter to confirm

Delete Device

Use **Delete Device** to erase one Device:

1. Point at the Device which you want to erase, press right button and click **Delete Device**
2. Click “OK” to confirm

Delete Device Code

Use Delete Code to erase code of one Device

1. Point at the Device which you want to erase its codes, press right button and click **Delete Code**
2. Click “OK” to confirm

Exchanging Data with the Remote

You can use RemoComm to transmit data to the remote or download the remote control's memory data to your PC.

Receiving Data from the Remote

Follow these instructions to download data from the remote control to your PC:

Connecting the Cable


Plug the phone jack into the Data Link port on the SRC-3810. Plug the USB port to PC.

Downloading Data from the Remote

From RemoComm, click  **Download from Remote** to begin transmitting the data from the SRC-3810 to your PC.

After finishing the transmission, save the data to a data or model file, or edit the data.

Sending Data to the Remote

1. From RemoComm, click  **Upload to Remote** to begin transmitting the data from your PC to the SRC-3810.
2. Both the PC and the SRC-3810 display screens indicating that the transmission is taking place:
3. After upload has completed, the SRC-3810 operates according to the new data.

Working with Models

Using RemoComm, you can uniquely open, edit, and save remote control codes to organize your SRC-3810 from an exclusive remote code database.

Import a Model

Use **Import** to load one set of device's codes from Library

1. Select the device that you want to load from library
2. Click **Import**
3. Open a model (*.smod) from Library
4. Click OPEN to Load file

Export a Model


Use RemoComm to save remote control codes to an independent model to create an exclusive remote code database.

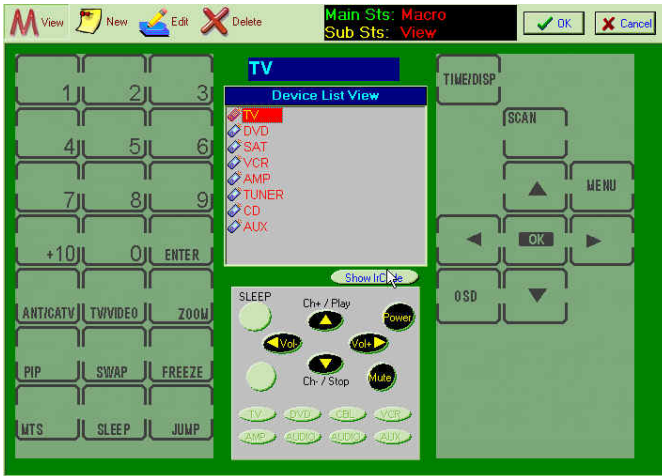
1. Select the device that you want to save
2. Click **Export**
3. Type a name for the model and click **Save**.

Setting Up Macros

Macros are available in the SRC-3810 each key. Each macro contains up to 60 steps.


Creating a New Macro

1. click  to open the Macro dialogue box:



2.  View : Check Macro Key of each Device

 New : Create a Macro Key

 Edit : Modify Macro Key

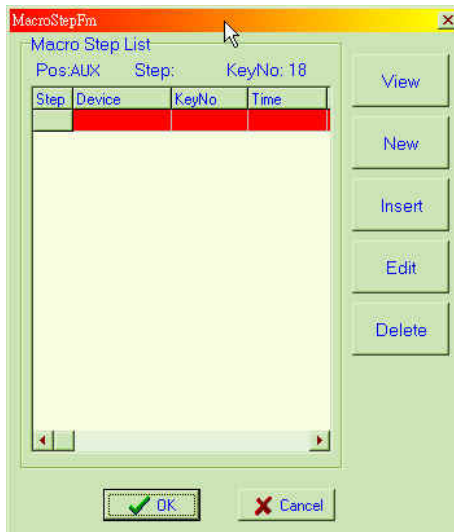
 Delete : Delete Macro Key

Ex: Watch DVD (Setup in AUX- Key 1)

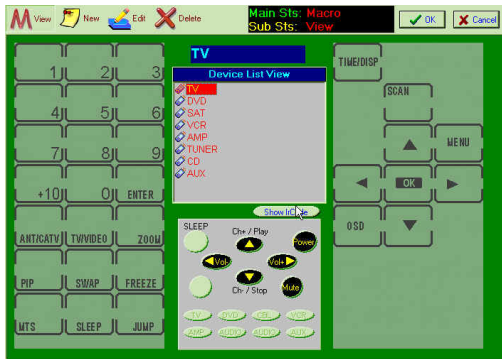
3. Click **New** and then click a macro button. The following dialog box appears:



4. Click **New**. The following screen appears:



5. Select a device layout from the **Bank** drop-down list:



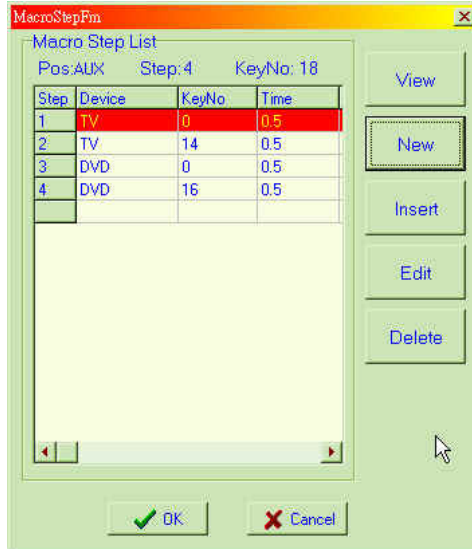
6. Click the key you want activated by this step:



7. Select a delay time from the **Delay** drop-down list:



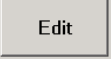
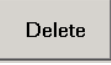


8. Repeat the steps above until you have entered all keystrokes that you want applied in this macro. click **OK** ,Each step is recorded in the macro Setup screen:



9. When you have finished recording the macro, click OK.


In addition to **New**, the following commands are available from the macro Setup screen:

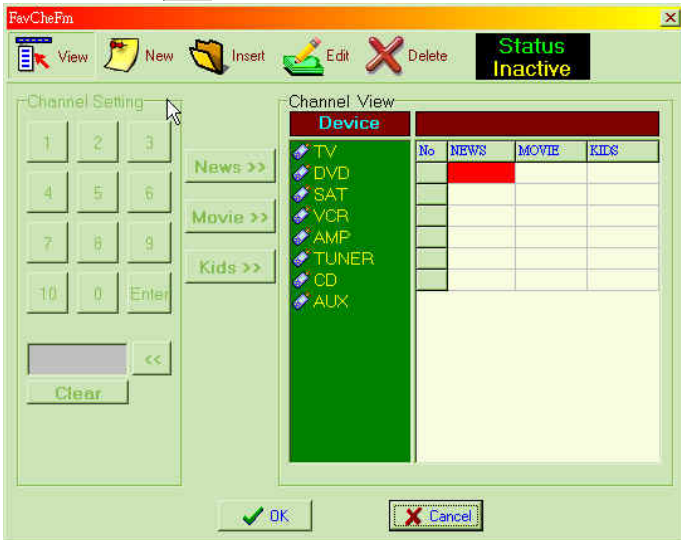
	Use New to start macro step: Please see above
	Use Insert to insert a new entry between macro steps: <ol style="list-style-type: none">1. Click a macro step. The new step will be inserted Before the clicked macro step.2. Click Insert.3. Modify the step according to the instructions above.4. Click OK.
	Use Edit to Modify an existing macro steps: <ol style="list-style-type: none">1. Click a macro step.2. Click Edit..3. Modify the step according to the instructions above.4. Click OK.
	Use Delete to delete an existing macro step: <ol style="list-style-type: none">1. Click a macro step. You are prompted to confirm deletion of the step:2. Click Delete.


Setting Up Quick Channel

User can group same attribute program inside on Q channel. You can put total 50 channel into 3 Q channel for every devices.




Creating Q Channel

1. click  to open the Q channel dialogue box:



2. Select device to have Q channel inside
3. Click  to Create Q channel
4. For example, if you want to have CH11 inside "NEWS", please have operation way as below.
5. Select "1" "1" on the numeral plate
6. Select "NEWS"
7. The channel 11 had been set into "NEWS" colum.
8. Repeat step 5-7 to enter another channel.
9. Press OK to complete setting.

No	NEWS	MOVIE	SPORTS
11			

 Insert	<p>Use Insert to insert a new entry between Channel steps:</p> <ol style="list-style-type: none"> 1. Click Insert. 2. Input a channel. The new channel will be inserted before the clicked channel step. 3. The new channel according to the instructions above. 4. Click OK.
 Edit	<p>Use Edit to Modify an existing channel:</p> <ol style="list-style-type: none"> 1. Click Edit.. 2. Click a channel. 3. Modify the channel according to the instructions above. 4. Click OK.
 Delete	<p>Use Delete to delete an existing macro step:</p> <ol style="list-style-type: none"> 1. Click Delete. 2. Click a channel deletion