

## Dual Cigarette Lighter Adaptor



ROHS

Price Each	RRP	4+	10+
P 0650 2 x socket to plug	14.95	13.50	11.95

## Dual Panel Mount Facia Plate

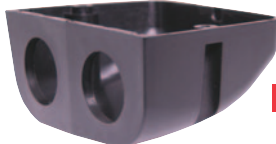


new

A flush panel mount facia with two holes suitable for mounting the plastic threaded sockets on this page. 105W x 43Hmm

Price Each	RRP	4+	10+
P 0681	2.95	2.70	2.40

## Dual Surface Mount Housing



new

A surface mount enclosure with two holes suitable for mounting the plastic threaded sockets on this page. 110W x 48H x 79Dmm.

Price Each	RRP	4+	10+
P 0680	4.95	4.50	4.00

## Panel Mount Dual USB Charging Socket

Connects directly to your 12V DC in your car and outputs 5V DC 2.1A. For charging only, not suitable for data. May be used without mounting facia if required. 65x42.5mm facia. 29mm mounting hole. 1.2m fly lead connection with ring terminal for earth. Weatherproof cap.



Price Each	RRP	4+	10+
P 0668 Dual USB	28.95	26.30	23.60

## Dual USB Charging Socket



new

Connects directly to 12V. Designed to fit P 0680 or P 0681, but can also be used standalone. 2.1A DC max current (shared between the two USB ports). 28mm mounting hole. Protective rubber cap. 19mm thread length (max material thickness).

Price Each	RRP	4+	10+
P 0677	15.95	14.40	12.80

## Flush Mount Car Accessory Socket



new

Available in merit type or standard car accessory socket. Designed to fit P 0680 or P 0681, but can also be used standalone. 28mm mounting hole. Protective rubber cap. Thread length 19mm.

Price Each	RRP	4+	10+
P 0675 Car accessory	8.50	7.65	6.80

## Flush Mount Merit Power Socket



new

Designed to fit P 0680 or P 0681, but can also be used standalone. 28mm mounting hole. Protective rubber cap. Thread length 16mm. (max thickness).

Price Each	RRP	4+	10+
P 0669 Merit type	14.95	13.45	11.95

## Flush Mount Socket To Suit Engel Fridge



new

Internal power LED.

Engel® 'Posi-Fit' style socket to suit Engel® fridges. Designed to fit P 0680 or P 0681, but can also be used standalone. 28mm mounting hole. Protective rubber cap. Thread length 19mm (max material thickness).

Price Each	RRP	4+	10+
P 0673	17.95	16.15	14.35

## Panel Mount Volt Meter



Designed to fit P 0680 or P 0681, but can also be used standalone. 28mm mounting hole. Fitted with 120mm fly leads.

Price Each	RRP	4+	10+
P 0672	14.95	13.50	12.00

## Panel Mount Volt &amp; Ammeter



new

Measures 6-30V DC @ 10A max with internal shunt. Designed to fit P 0680 or P 0681, but can also be used standalone. 28mm mounting hole. 19mm thread length (max material thickness).

Price Each	RRP	2+	4+
P 0671	35.95	32.50	28.95

## Surface Mount Car Accessory Socket



ROHS

Mounts under the dashboard. Rubber cap prevents dust buildup. 6.3mm spade terminal connection. May be used without mounting bracket if required. Will lock when mated with P 0662.

Price Each	RRP	4+	10+
P 0651 Under-dash socket	11.95	11.10	10.10

## Panel Mount Car Accessory Socket



ROHS

Rubber cap prevents dust buildup. 6.3mm spade terminal connection. May be used without mounting facia if required. 28mm mounting hole. 60 x 42.5mm mounting facia. Will lock when mated with P 0662.

Price Each	RRP	4+	10+
P 0654 Panel mount socket	9.95	8.95	7.95

## Surface Mount Car Accessory Socket



A surface mount socket with rubber cap to prevent dust buildup. Includes rubber seal for base and mounting hardware. 87L x 48H x 55Wmm. 6.3mm spade terminals. Will lock when mated with P 0662.

Price Each	RRP	4+	10+
P 0649 Surface mount socket	14.95	13.50	12.00

## Flush Mount Car Accessory Socket



ROHS

Rubber cap prevents dust buildup. 6.3mm spade terminal for earth, bullet male for 12V. Panel mount 22mm mounting hole. Max panel thickness 6mm.

Price Each	RRP	4+	10+
P 0648	5.95	5.50	5.10

## Merit DC Panel Sockets



P 0652

P 0659

Rated at 15A. Both fitted with 6.4mm spade connectors. P 0659 fitted with spring loaded plastic cap.

Price Each	RRP	10+	40+
P 0652	6.20	5.20	4.75
P 0659 Metal W/Flip Cover	9.95	8.95	8.25