

External Top Open Camera Housing IP66 with Heater, Fan & IR LED's

The carton should contain the following items:

- Camera bracket
- Screw kit

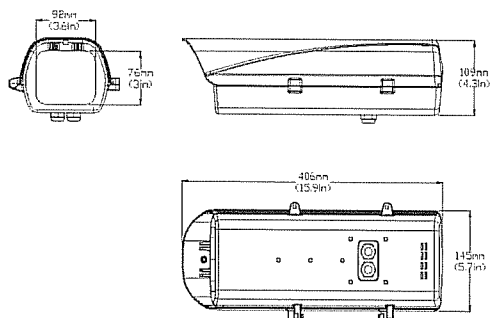
If any item is missing or damaged, please contact your local reseller for replacement.

Note: This installation should be completed by a qualified installer and should conform to all local codes and regulations.

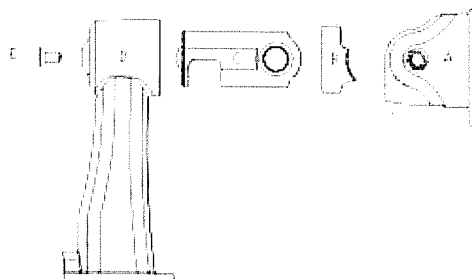
Introduction

The is constructed from sturdy die cast aluminum with environmental protection rated to IP-66. There is built-in fan and heater included. The fan operates when the temperature reaches over **35°C** and stops once the temperature stabilizes at **25°C** again. The built-in heater begins operation once the temperature is under **15°C** and stops once the temperature is over **25°C** again.

ASSEMBLING THE MOUNTING BRACKET

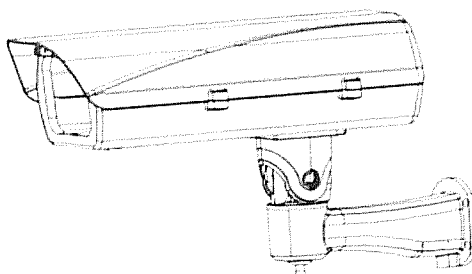
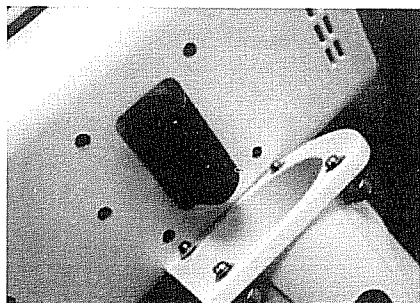


406mm(L) x 145mm (W) x 109mm (H)

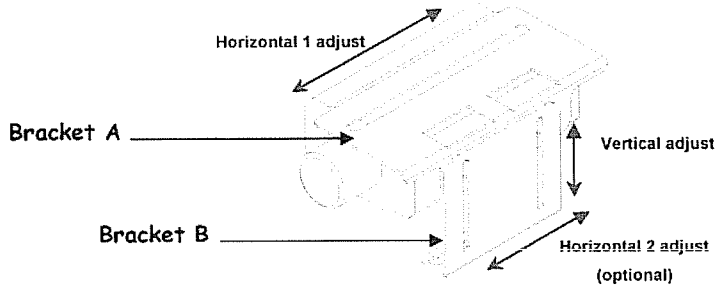


Complete assembly by tightening the "E" screw.

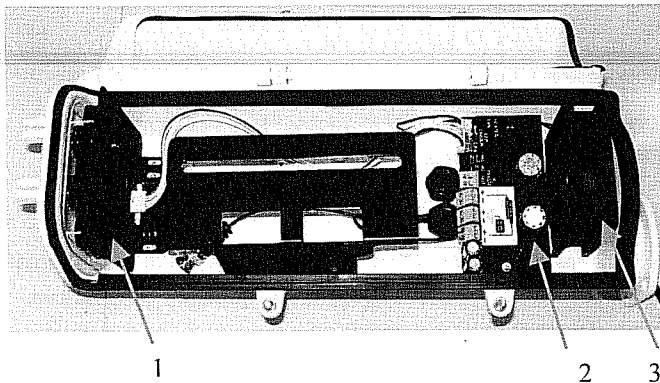
Connect the bracket by screwing in the 4 mounting screws on the bottom side of the housing.



Adjustable Mounting Brackets:



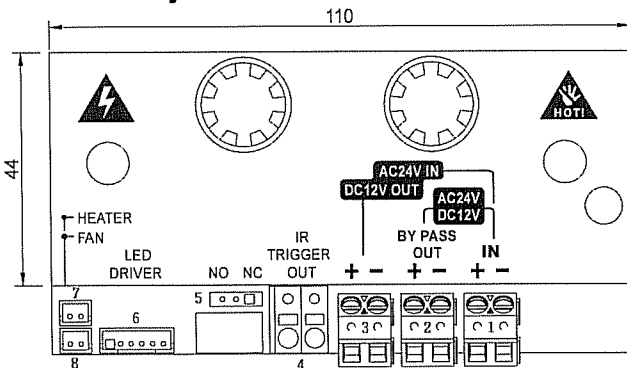
Inside The Housing



1. Infrared Illuminator & Heater
2. Power relay board
3. Fan

- First, attach Bracket A to your camera with the included mounting screws. (Note: Do not tighten the screws 100% as you will need to make adjustments later.)
- Next attach Bracket A + camera to Bracket B. Again, only tighten enough to hold in place while deciding on the final position. Once the camera's final position has been decided, tighten all screws.

Power Relay Board:



1. DC12V/2.5A or AC24V/2.5A power input
2. DC12V/2.5A or AC24V/2.5A power by pass output
3. DC12V power output for camera when the power input is AC24V
4. IR trigger out port for IR LED external synchronization
5. Select the switch type is NO or NC
6. Power supply to infrared LEDs
7. Power supply to fan
8. Power supply to heater

Note:

- AC and DC power can NOT operate simultaneously.
- Please note the difference between positive and negative terminals when connecting power.