

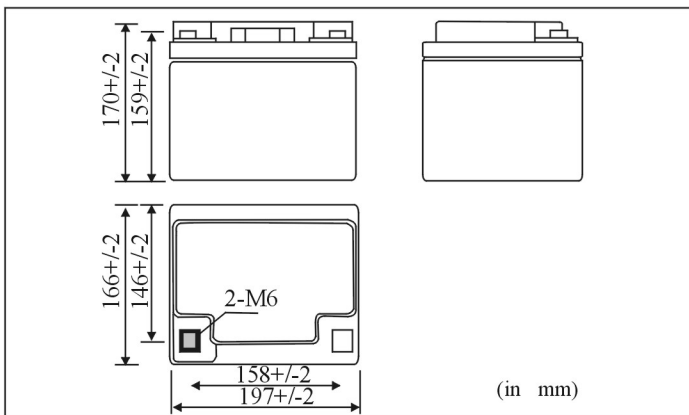
HT 12V40 (12V40AH)

Major Application(s):
High-rate discharge applications

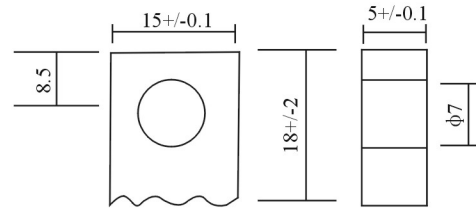


PHYSICAL SPECIFICATION

Nominal Voltage		12V
Nominal Capacity (10HR)		40AH
Dimensions	Length	197±2mm (7.76 inches)
	Width	166±2mm (6.54 inches)
	Container Height	170±2mm (6.69 inches)
	Total Height	170±2mm (6.69 inches)
Weight		Approx 12.5 kg (27.5 lbs)
Standard Terminal		B3 (Bolt-and-nut lead terminal) Bolt Type:M5



B3 (Bolt-and-nut lead terminal)
Bolt Type: M5



ELECTRICAL SPECIFICATION

Capacity	20 hour rate (2A)	40AH	<p>It is recommended to use constant-voltage charge and recharge immediately after use</p> <table border="1"> <tr> <td rowspan="2">Constant-Voltage Charge</td> <td>Cycle</td> <td>Initial Charging Current less than 12A Voltage 14.40V~15.00V at 25°C (77°F) Temperature Coefficient -30mV/°C</td> </tr> <tr> <td>Standby</td> <td>No limit on Initial Charging Current Voltage 13.50V~13.80V at 25°C (77°F) Temperature Coefficient -20mV/°C</td> </tr> </table>	Constant-Voltage Charge	Cycle	Initial Charging Current less than 12A Voltage 14.40V~15.00V at 25°C (77°F) Temperature Coefficient -30mV/°C	Standby	No limit on Initial Charging Current Voltage 13.50V~13.80V at 25°C (77°F) Temperature Coefficient -20mV/°C
	Constant-Voltage Charge	Cycle			Initial Charging Current less than 12A Voltage 14.40V~15.00V at 25°C (77°F) Temperature Coefficient -30mV/°C			
Standby		No limit on Initial Charging Current Voltage 13.50V~13.80V at 25°C (77°F) Temperature Coefficient -20mV/°C						
	10 hour rate (3.8A)	38AH						
	5 hour rate (7A)	35AH						
	3 hour rate (10.5A)	31.5AH						
	1 hour rate (24A)	24AH						
Capacity affected by Temperature	40°C (104 °F)	102%						
	25°C (77 °F)	100%						
	0°C (32 °F)	85%						
Internal Resistance	Fully charged battery(25°C,77°F) 8m Ω							

